

**SURVEY &
REMONUMENTATION**

FEB 08 2001

COPY

SECTION

**2000 REMONUMENTATION PROGRAM
LAND CORNER RECORDATION CERTIFICATE**
Filing Requirement of Act 74,
Mich. P.A. 1970

RECEIVED FOR RECORD
LIBER NO. _____ PAGE NO. _____
FILE NO. **#118 Arbela**

00 DEC 19 PM 1:36

Greg M. ...
TUSCOLA COUNTY
REGISTER OF DEEDS

Register of Deeds Stamp & File Number

For corners in: ARBELA TWP.

Tuscola Located In:
(County)

Corner Code #

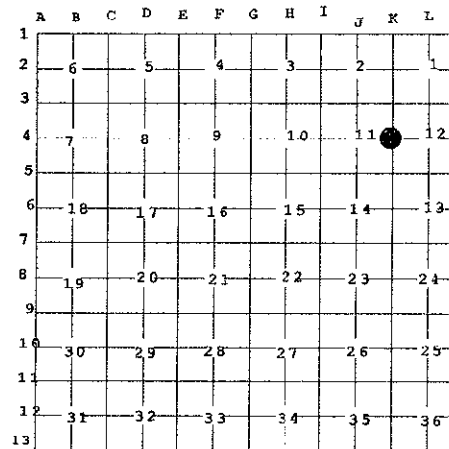
- 1. Public Land Survey T 10N R 7E K-4
 T _____ R _____
 T _____ R _____
 T _____ R _____
- 2. Property Controlling S _____ T _____ R _____
 in Section S _____ T _____ R _____
- 3. Miscellaneous S _____ T _____ R _____
 Property in Sec. S _____ T _____ R _____

4. Lot No. _____, Recorded Plat

5. Private Claims

I, Kari M. Lohela, in a field survey on August 29, 20 00 do hereby state that under requirements of P.A. 74, Michigan P.A. of 1970, the corner points mentioned in lines 1 and 2 above were in conformance with regulations and rules therefore as required in the current manual of survey instructions of the United States Department of the Interior, Bureau of Land Management or by a decree of a Court of Law and /or that the corner points mentioned in lines 3, 4 and 5 above were in conformance with the rules of the Michigan Board of Land Surveyors or by a Decree of a Court of Law; established, re-established, monumented, recovered, found as expressed below:

NOTE: Not more than 2 corners, all in the same town and range, may be recorded on this certificate.



* MAY 29, 1985, SURVEY L.550 P.1127, ROBERT KAY, PS 14096, FOUND 1/2" IRON, EAST 20.0' NW COR WINGWALL, N60°W 22.65' NAIL 3" ELM, N70°W NAIL 4" ELM

A. Description of original monument and accessories and/or subsequent restoration:
1822 G.L.O. NOTES, JOSEPH FLETCHER, D.S., SET 1/4 CORNER POST, OAK 10 S 56 W 15, LYNN 9 N 57 W 18

MAY 13, 1976, LCRC P.46 ARBELA TWP., JAMES BECK, PS 21559, FOUND 1/2" IRON, N 85 W 37.48' RLS 11192 TAG IN 8" OAK, N 45 W 50.45' PK NAIL IN 12" OAK

NOV. 19, 1976, SURVEY L.467 P.803, DAVID ROWE, PS 11192, NO MENTION OF OBJECT OR ACCESSORIES.

DEC. 30, 1976, LCRC P.56 ARBELA TWP., KENNETH DUNTON, PS 23503, FOUND 1/2" RE-ROD, N35 W 50.50' PK IN 12" OAK, WEST 37.43' PK IN 8" OAK

*
B. Description of corner evidence found and/or method applied in restoring or reestablishing corner:
FOUND BENT 1/2" REBAR. RECOVERED ONE ACCESSORY WHICH INDICATES THAT 1/2" REBAR IS LIKELY IN SAME POSITION AS LCRC'S CITED ABOVE.

ACCEPTED FOUND 1/2" REBAR AS BEST AVAILABLE EVIDENCE OF ORIGINAL CORNER POSITION.

C. Description of monument for corner and accessories established to perpetuate locating the position of the corner:

- REMOVED 1/2" REBAR AND SET 36" CONCRETE MONUMENT WITH STANDARD BRASS CAP STAMPED K-4, T10N-R7E.
- N 58° E, 36.44' SET REMON. TAG & NAIL IN NW FACE OF 18" POPLAR
- S 25° E, 58.70' SET REMON. TAG & NAIL IN W FACE OF 8" ELM IN TRIPLE ELM CLUMP
- S 86° W, 31.40' SET REMON. TAG & NAIL IN N FACE OF 30" STUMP
- N 42° W, 43.18' SET REMON. TAG & NAIL IN NE FACE OF 36" BASE OF MULTIPLE ELM CLUMP
- N 35° W, 50.60' FOUND P.K. NAIL IN SW FACE 12" STUMP (POOR CONDITION)

