

FEB 08 2001

2000 REMONUMENTATION PROGRAM
LAND CORNER RECORDATION CERTIFICATE
Filing Requirement of Act 74,
Mich. P.A. 1970

SECTION

For corners in: ARBELA TWP.

Tuscola Located In: Corner Code #
(County)

- 1. Public Land Survey T 10N R 7E L-1
T _____ R _____
T _____ R _____
T _____ R _____
- 2. Property Controlling S _____ T _____ R _____
in Section S _____ T _____ R _____
- 3. Miscellaneous S _____ T _____ R _____
Property in Sec. S _____ T _____ R _____

4. Lot No. _____, Recorded Plat

5. Private Claims

I, Kari M. Lohela, in a field survey on August 29, 2000 do hereby state that under requirements of P.A. 74, Michigan P.A. of 1970, the corner points mentioned in lines 1 and 2 above were in conformance with regulations and rules therefore as required in the current manual of survey instructions of the United States Department of the Interior, Bureau of Land Management or by a decree of a Court of Law and /or that the corner points mentioned in lines 3, 4 and 5 above were in conformance with the rules of the Michigan Board of Land Surveyors or by a Decree of a Court of Law; established, re-established, monumented, recovered, found as expressed below:

NOTE: Not more than 2 corners, all in the same town and range, may be recorded on this certificate.

| | A | B | C | D | E | F | G | H | I | J | K | L |
|----|----|---|---|----|---|----|---|----|---|----|---|----|
| 1 | | | | | | | | | | | | |
| 2 | 6 | | | 5 | | 4 | | 3 | | 2 | | 1 |
| 3 | | | | | | | | | | | | |
| 4 | 7 | | | | | 9 | | 10 | | 11 | | 12 |
| 5 | | | | | | | | | | | | |
| 6 | 18 | | | 17 | | 16 | | 15 | | 14 | | 13 |
| 7 | | | | | | | | | | | | |
| 8 | 19 | | | 20 | | 21 | | 22 | | 23 | | 24 |
| 9 | | | | | | | | | | | | |
| 10 | 30 | | | 29 | | 28 | | 27 | | 26 | | 25 |
| 11 | | | | | | | | | | | | |
| 12 | 31 | | | 32 | | 33 | | 34 | | 35 | | 36 |
| 13 | | | | | | | | | | | | |

RECEIVED FOR RECORD
LIBER NO. _____ PAGE NO. _____
FILE NO. #123 Arbelá

00 DEC 19 PM 1:37

George M. ...

TUSCOLA COUNTY
REGISTER OF DEEDS

Register of Deeds Stamp & File Number

A. Description of original monument and accessories and/or subsequent restoration:

G.L.O. NOT SET

SEPT 1, 1982, LCRC P.71, ARBELA TWP., KENNETH DUNTON PS 23503, FOUND 1/2" PIPE, S 70 E 64.60' 18" HICKORY, SOUTH 59.50' P.P., S 25 W 50.60' 5" PINE

B. Description of corner evidence found and/or method applied in restoring or reestablishing corner:

FOUND 1/2" PIPE 2.13' NORTH OF STD. TOWNSHIP LINE. RECOVERED 3 ACCESSORIES WHICH INDICATE THAT FOUND 1/2" PIPE IS IN SAME POSITION AS LCRC CITED ABOVE.

EXTENDED NORTH-SOUTH 1/4 LINE SOUTHERLY, FROM 1/2" PIPE AND CORNER L-3, TO INTERSECTION WITH STD. TOWNSHIP LINE. SET AMENDED CORNER ON STD. TOWNSHIP LINE.

C. Description of monument for corner and accessories established to perpetuate locating the position of the corner:

SET 36" CONCRETE MONUMENT WITH STANDARD BRASS CAP STAMPED L-1 AC (AMENDED CORNER), T10N-R7E, IN MONUMENT BOX.

NORTH, 2.13' FOUND 1/2" PIPE

S 60° E, 64.36' SET REMON. TAG & NAIL IN SW FACE OF 18" HICKORY

SOUTH, 57.76' SET REMON. TAG & NAIL IN E FACE OF UTILITY POLE

S 25° W, 48.73' SET REMON. TAG & NAIL ABOVE FOUND NAIL & TAG IN NW FACE OF 15" PINE

WEST, 32.78' FOUND TUSCOLA COUNTY MONUMENT STAMPED L-13, T11N, R7E

Signed by

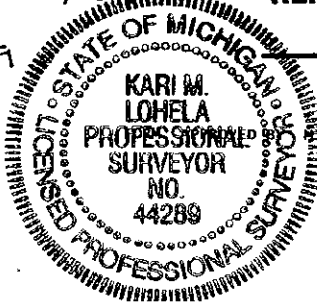
Kari M. Lohela

Date 12/18/00

APPROVED BY TUSCOLA COUNTY
REMONUMENTATION PEER GROUP

12/06/2000

Surveyor's Michigan License No. 44289



MICHIGAN STATE BOARD OF PROFESSIONAL SURVEYORS, JAN. 28, 1971

REVISED MAY 14, 1975

REVISED JAN., 1983

REVISED OCT., 1995

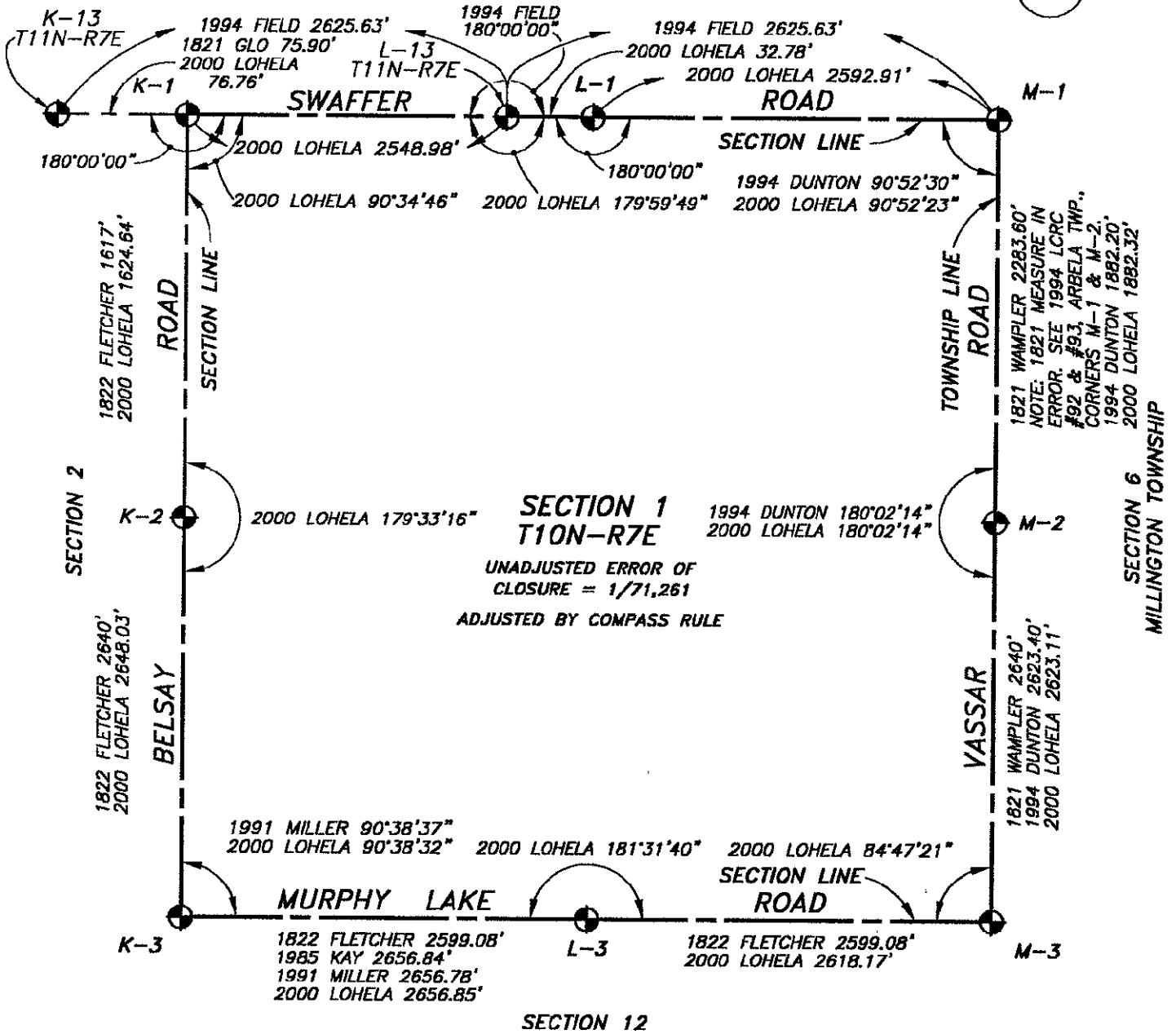
*ADD
MWP
RFB*

SURVEY & REMONUMENTATION

FEB 08 2001

SECTION

SECTION 36
TUSCOLA TOWNSHIP



SECTION 12