

SURVEY & REMONUMENTATION

FEB 08 2001

**2000 REMONUMENTATION
LAND CORNER RECORDATION CERTIFICATE**
Filing Requirement of Act 74, Mich. P.A. 1970

RECEIVED FOR RECORD
LIBER NO. _____ PAGE NO. _____
FILE NO. #115 Millington
00 DEC 20 PM 2:45

Gregory McQueen
TUSCOLA COUNTY
REGISTER OF DEEDS

SECTION

For corners in: **MILLINGTON TWP.**

<u>TUSCOLA</u> (County)	Located In:	Corner Code #
1. Public Land Survey	T <u>10N</u> R <u>08E</u>	<u>K-11</u>
	T _____ R _____	_____
	T _____ R _____	_____
	T _____ R _____	_____
2. Property Controlling in Section	S _____ T _____ R _____	_____
	S _____ T _____ R _____	_____
3. Miscellaneous Property in Sec.	S _____ T _____ R _____	_____
	S _____ T _____ R _____	_____

Register of Deeds Stamp & File Number

4. Lot No. _____, Recorded Plat _____
5. Private Claims _____

	A	B	C	D	E	F	G	H	I	J	K	L	M
1													
2	6	5	4	3	2	1							
3													
4	7	8	9	10	11	12							
5													
6	18	17	16	15	14	13							
7													
8	19	20	21	22	23	24							
9													
10	30	29	28	27	26	25							
11													
12	31	32	33	34	35	36							
13													

I, MARK W. POWELL, P.S., in a field survey on AUGUST 17 2000, do hereby certify that under requirements of P.A. 74, Michigan P.A. of 1970, the corner points mentioned in lines 1 and 2 above were in conformance with regulations and rules therefore as required in the current manual of survey instructions of the United States Department of the Interior, Bureau of Land Management or by a decree of a Court of Law and/or that the corner points mentioned in lines 3, 4 and 5 above were in conformance with the rules of the Michigan Board of Land Surveyors or by a Decree of a Court of Law; established, re-established, monumented, re-monumented, recovered, found as expressed below:

NOTE: Not more than 4 corners, all in the same town and range, may be recorded on this certificate.

- A. Description of original monument and accessories and/or subsequent restoration:
1822 GLO; FLETCHER D.S.; SET POST; PINE 40 N27E 14 LKS., BEECH 12 S12E 20 LKS.
1900 Felton, C.S.; PG 10-3; CEDAR POST, HARD BRICK & STONE; PINE 36 S5 1/2E 111.5FT., PINE 20 N23 1/2E 51.5FT
1971 FLINT SURVEYING; PIOTROWSKI, P.S. #9685; FND. 1/2" STEEL ROD; S45E 72.25' ROAD SIGN, S45W 100.0' T.POLE
* 1972 EDMANDS ENG.; MCGINNIS, P.S. #18999; SURVEY, L.1 PG.485; FND. 3/4" BAR; S40E 55.97' T.POLE, S40W 73.47' PK NAIL IN P.POLE, N45E 78.9' T.POLE
1972 ROWE ENG.; ROWE, P.S. #11192; SURVEY, L.1 PG.532-3; FND. 3/4" BAR; N55E 78.80' NAIL IN T.POLE, S40E 55.97' NAIL IN T.POLE, S55W 73.42' PK NAIL & WASHER IN P.POLE, S45W 5.0' C/L 30" CMP
1972 ROWE ENG.; ROWE, P.S. #11192; LCRC, PG.9; SAME AS 1972 SURVEY
1972 H.B.E.; HENDERSON, P.S. #16043; SURVEY, L.2 PG. 232; SET 1/2" IRON; N70W 72.40' FENCE POST, S45E 55.89' P.POLE, S20E 104.35' 20" APPLE
1972 HENDERSON, P.S. #16043; LCRC, PG.15; SAME AS 1972 SURVEY (SET BY GRAVEL RD. CENTERLINES)
1972 H.B.E.; HENDERSON, P.S. #16043; SURVEY, L.2 PG. 234; SAME AS 1972 HENDERSON & BATES
*1972 GOSS, P.S. #16040; LCRC, PG.16; FND 3/4" BAR 1.0' DEEP; S40E 55.47' T.POLE, S40W 73.47' P.POLE, N45E 78.9' T.POLE

(SECTION A. CONTINUED ON BACK)

B. Description of corner evidence found and/or method applied in restoring or reestablishing corner:
2000 ROWE; Powell, P.S. ; FND. 3/4" ROD; 16.9' W. OF C/L SHERIDAN RD., 9' S. OF C/L ARBELA RD. TO E., NO DEFINITE OCCUPATION TO W.; RECOVERED 1 PREVIOUS WIT WHICH INDICATES THAT FND. ROD IS IN SAME POSITION AS 1972 SURVEYS CITED ABOVE, BY Goss and Rowe.
ACCEPTED FND. ROD AS BEST AVAILABLE EVIDENCE OF ORIGINAL CORNER POSITION.

C. Description of monument for corner and accessories established to perpetuate locating the position of the corner:
K-11 REPLACED FND 3/4" ROD W/ STD. REMON MONUMENT, CAP STAMPED K-11 T10N R8E (CAP STAMPED P.S. 37276)
S55°W 74.40' P-K NAIL & WASHER IN NE FACE P.POLE
N85°W 8.10' P-K NAIL IN TOP OF GUARD RAIL POST
N05°W 29.19' P-K NAIL IN TOP OF GUARD RAIL POST
N40°E 64.13' P-K NAIL IN TOP OF GUARD RAIL POST
S60°E 59.19' P-K NAIL IN TOP OF GUARD RAIL POST
N68°E, 16.79' FND 5/8" ROD IN MON BOX (origin unknown)



Signed by Mark W Powell Date 12-19-00
Surveyor's Michigan License No. 44298

FORM APPROVED BY MICHIGAN STATE BOARD OF LAND SURVEYORS JAN. 26, 1971
REVISED MAY 14, 1976
REVISED JAN., 1983
ADAPTED FOR WORD PROCESSING MARCH, 1983

**APPROVED BY TUSCOLA COUNTY
REMONUMENTATION PEER GROUP**
12/04/2000

*1500
KLL
RWB*

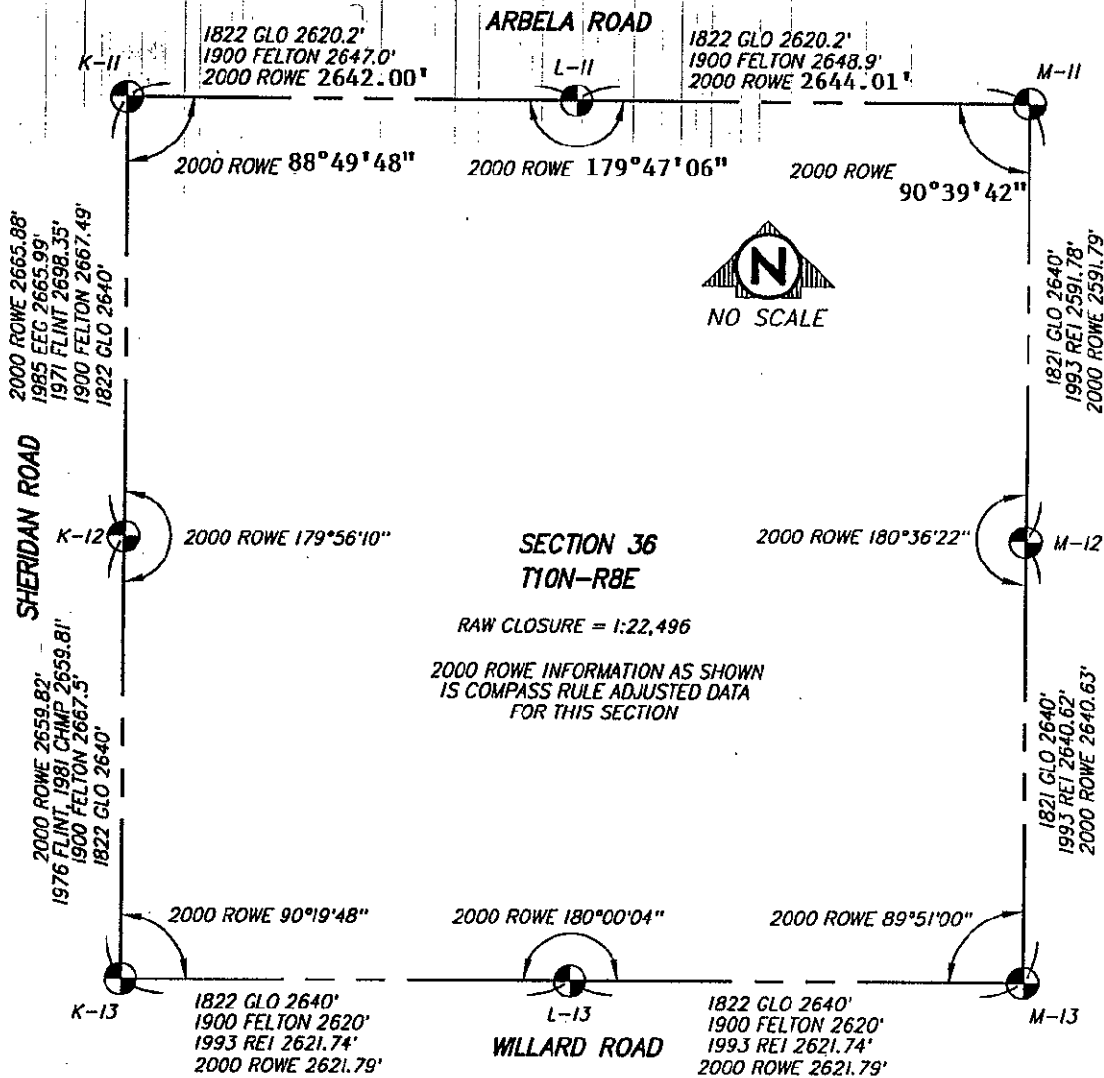
COPY

COPY

RECORDED BY COUNTY CLERK
RECORDED BY COUNTY CLERK

SECTION A CONT. K-11 T10N-R8E

1983 EMERY, P.S. #24593; SURVEY, L.536 PG.662; FND. 3/4" IRON ROD; EAST 4.9' WEDGE BIT. PAVEMENT, S75W 8.32' PK NAIL W/TAG IN GUARD RAIL POST, N35W 12.77' PK NAIL W/TAG IN GUARD RAIL POST, S60E 58.69' PK NAIL W/TAG IN GUARD RAIL POST
 1983 EMERY, P.S. #24593; LCRC, PG 58; SAME AS 1983 SURVEY
 1985 GRAVLIN, P.S. #23510; SURVEY, L.557 PG.797; SAME AS 1983 SURVEY
 1985 GRAVLIN, P.S. #23510; SURVEY, L.571 PG.996; SAME AS 1983 SURVEY
 1996 H.B.E.; ELRICH, P.S. #18986; SURVEY, L.694 PG.1380; NO OBJECT STATED; N85W 8.12' PK NAIL IN GUARD POST, N5W 29.22' PK NAIL IN GUARD POST, N40E 64.21' PK NAIL IN GUARD POST, S60E 60.12' PK NAIL IN GUARD POST



SURVEY & REMONUMENTATION

FEB 08 2001

SECTION