

COMMISSION

1993 REMONUMENTATION PROGRAM
LAND CORNER RECORDATION CERTIFICATE

Filing Requirement of Act 74, Mich. P.A. 1970

MILLINGTON TOWNSHIP

For corners in <u>TUSCOLA</u> <small>(County)</small>	Located In:	Corner Code #
1. Public Land Survey	T 10 N R 8 E	L-13
	T R	
	T R	
	T R	
2. Property Controlling in Section	S T R	
	S T R	
3. Miscellaneous Property in Sec.	S T R	
	S T R	

RECEIVED FOR RECORD
LIBER NO. PAGE NO. 81
FILING NO. Millington
93 NOV 19 PM 1:25
VIRGINIA M. JAMES
TUSCOLA COUNTY
REGISTER OF DEEDS

Register of Deeds Stamp & File Number

4. Lot No. _____ Recorded Plat _____
5. Private Claims _____

I, JONATHAN M. FIELD, in a field survey on OCTOBER 19 93, do hereby certify that under requirements of P.A. 74, Michigan P.A. of 1970, the corner points mentioned in lines 1 and 2 above were in conformance with regulations and rules therefore as required in the current manual of survey instructions of the United States Department of the Interior, Bureau of Land Management or by a decree of a Court of Law and/or that the corner points mentioned in lines 3, 4 and 5 above were in conformance with the rules of the Michigan Board of Land Surveyors or by a Decree of a Court of Law, established, re-established, monumented, re-monumented, recovered, found as expressed below:

NOTE: Not more than 4 corners, all in the same town and range, may be recorded on this certificate.

A. Description of original monument and accessories and/or subsequent restoration:

1821 GLO - WAMPLER, D.S. - SET 1/2 MILE POST; IRONWOOD 8" S21W 8 LKS., BEECH 16" EAST 5 LKS.
1900 ???? , C.S. - SET FROM MEAS.; IRON ROD 3' LONG; COR UNDER RR BRIDGE, 23 FT W. & 37 1/2 FT S. OF S. RAIL

NO SUBSEQUENT RECORD

	A	B	C	D	E	F	G	H	I	J	K	L	M
1													
2	6	5	4	3	2	1							
3													
4	7	8	9	10	11	12							
5													
6	18	17	16	15	14	13							
7													
8	19	20	21	22	23	24							
9													
10	30	29	28	27	26	25							
11													
12	31	32	33	34	35	36							
13													

COPY

B. Description of corner evidence found and/or method applied in restoring or reestablishing corner:

1993 ROWE ENG. - FIELD, P.S.#37276; FND NOTHING AT CORNER, RR BRIDGE HAS BEEN REMOVED AND EXISTING GROUND SURFACE IS 10-12' HIGHER THAN OLD RR GRADE, TRACKS HAVE BEEN REMOVED, MEASUREMENT BETWEEN SW AND SE CORNERS OF SEC. 36, T10N-R8E IS WITHIN 3.5' OF 1900 CO. SURVEYOR (CO. SURVEYOR HAD 2620' W. & 2620' E.) 300' +/- NORTH, FND OLD FENCE WIRE RUNNING N-S THRU TRIPLE 20" OAK TREE

ESTABLISHED CORNER BY SINGLE PROPORTIONMENT OF 1900 CO. SURVEYOR DISTANCES AND ON LINE BETWEEN SW & SE CORNERS OF SEC. 36, T10N-R8E



SEE ALSO BACK OF THIS FORM

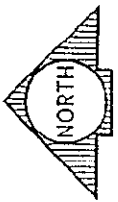
C. Description of monument for corner and accessories established to perpetuate locating the position of the corner:

L-13 SET STANDARD MONUMENT (5/8" ROD W/ BRASS CAP IN CONC.)
N51°E, 76.61' SET NAIL W/REMON TAG IN SE FACE P. POLE
S19°E, 62.38' SET NAIL W/REMON TAG IN 6" POPLAR
S57°W, 38.69' SET 1/2" ROD
N85°W, 30.19' FND 1/2" ROD W/CAP #12024 IN OLD RR R.O.W. FENCE NW'LY
N88°W, 68.03' FND 1/2" ROD W/ DELTA ENG. CAP AT APPARENT N1/4 COR SEC.1, T9N-R8E
N86°E, 36.04' FND RR SPIKE AT E'LY EDGE OF GRAVEL ROAD ON C/L RR GRADE NW'LY & SE'LY

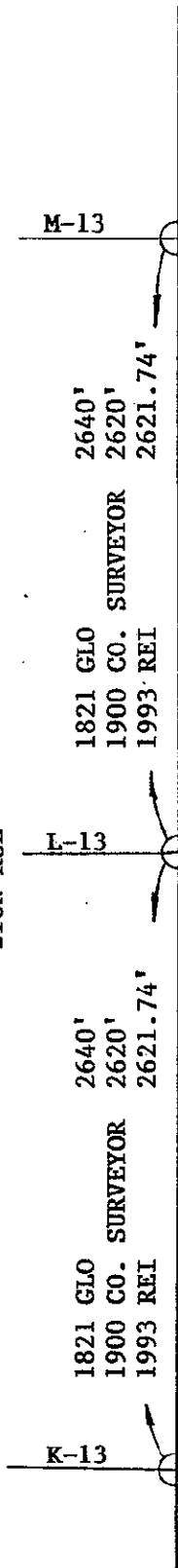
Signed by Jonathan M. Field Date 11-15-93
Surveyor's Michigan License No. 37276

APPROVED
11-15-93
J.M.F.
J.M.F.

COPY



SECTION 36
TION-R8E



END 1/2" ROD
W/ DELTA ENG. CAP
2.39' N

SECTION 1
T9N-R8E

2640