

DEC 07 1994

COMMISSION

1994 REMONUMENTATION PROGRAM
LAND CORNER RECORDATION CERTIFICATE
Filing Requirement of Act 74, Mich. P.A. 1970

For corners in WATERTOWN TOWNSHIP

TUSCOLA
(County)

Located In:

Corner Code //

1. Public Land Survey	T 10N. R 9E	A-13.
	T R
	T R
	T R
2. Property Controlling in Section	S T R
	S T R
3. Miscellaneous Property in Sec.	S T R
	S T R

4. Lot No. _____, Recorded Plat _____
 5. Private Claims _____

COPY

RECEIVED FOR RECORD
 LIBER NO. _____ PAGE NO. _____
 FILING NO. 69
 WATERTOWN TOWNSHIP
 9th NOV -9 PM 2:20
 VIRGINIA N. HALLARH
 TUSCOLA COUNTY
 REGISTER OF DEEDS

Register of Deeds Stamp & File Number

I, Lionel Roy Emery in a field survey on May 16, 19 94 do hereby certify that under requirements of P.A. 74, Michigan P.A. of 1970, the corner points mentioned in lines 1 and 2 above were in conformance with regulations and rules therefore as required in the current manual of survey instructions of the United States Department of the Interior, Bureau of Land Management or by a decree of a Court of Law and/or that the corner points mentioned in lines 3, 4 and 5 above were in conformance with the rules of the Michigan Board of Land Surveyors or by a Decree of a Court of Law; established, re-established, monumented, re-monumented, recovered, found as expressed below:

NOTE: Not more than 4 corners, all in the same town and range, may be recorded on this certificate.

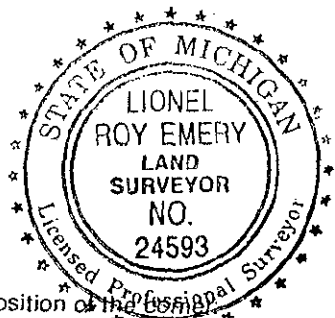
A	B	C	D	E	F	G	H	I	J	K	L	M
2	6	5	4	3	2	1						
3												
4	7	8	9	10	11	12						
5												
6	18	17	16	15	14	13						
7												
8	19	20	21	22	23	24						
9												
10	30	29	28	27	26	25						
11												
12	31	32	33	34	35	36						
13												

A. Description of original monument and accessories and/or subsequent restoration:

1834 (Gov't. Land Office Notes) Harvey Parke, D.S. -Intersected Range line 13.68 N. of quarter Section cor. on E by Sec 36 Birch 14 N5E 90; Birch 8 S75E 1.58
 1898 (County Surveyor's Record, pages 320 and 321, Tuscola County) George B. Felton -from Bearing trees in 1879- O. post & crockery at corner.

B. Description of corner evidence found and/or method applied in restoring or reestablishing corner:

This position is not accessible due to being inundated by 'Beaver Pond'.
 Placed reference corner Monument in South Section line 245.00 feet Easterly from calculated position. The South line of Section 31 being held at remains of old Woven wire fence found throughout Section West of "Hart Lake", so-called.



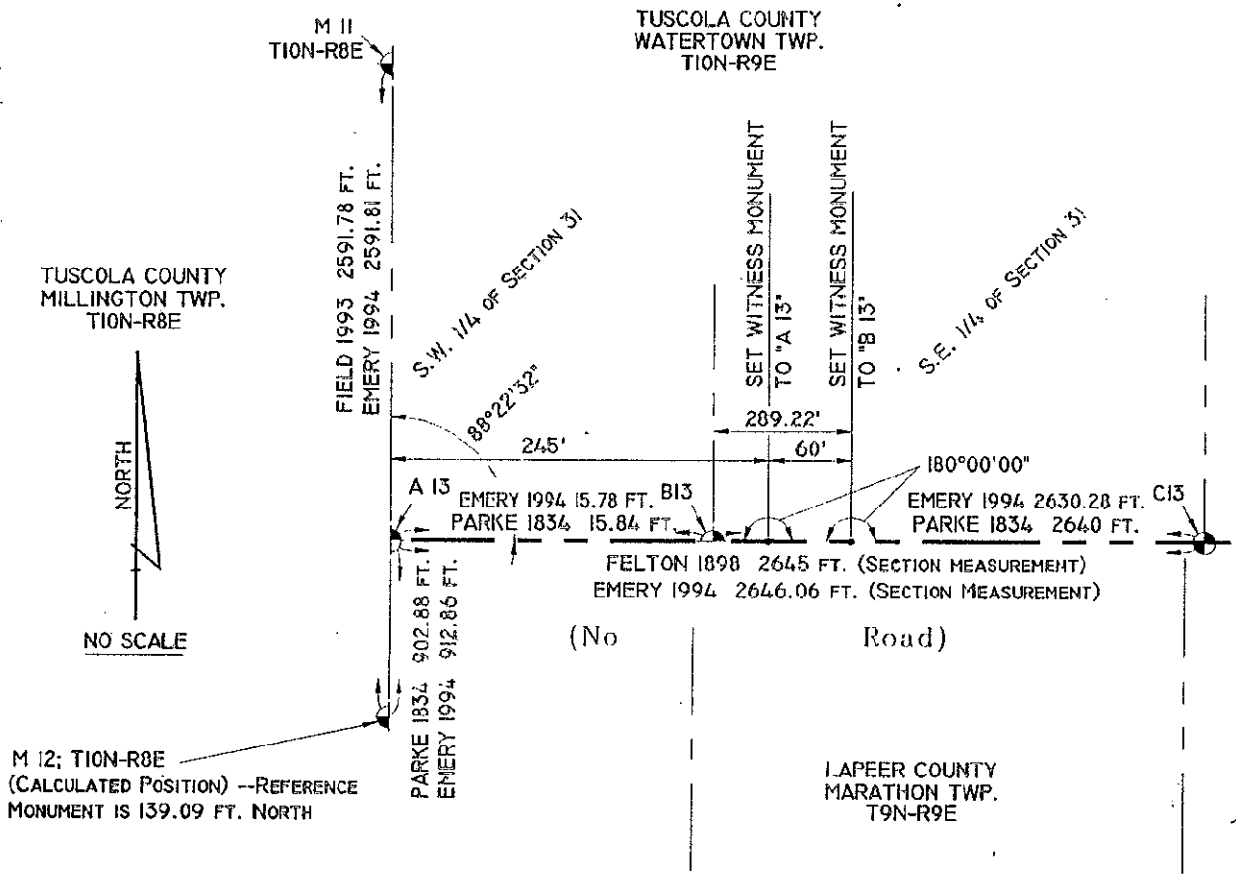
C. Description of monument for corner and accessories established to perpetuate locating the position of the corner:

Placed Standard Tuscola County Concrete Monument with 2" Brass Cap stamped A 13 W.C. T10N-R9E. Note: accessories shown below are for the reference marker.
 N60°E, 24.98' -T.C. Remon. tag in North face of 10" Oak
 S08°E, 6.87' -T.C. Remon. tag in East face of 8" Oak
 S54°W, 24.12' -T.C. Remon. tag in North face of 24" Poplar
 N08°W, 17.91' -T.C. Remon. tag in East face of 14" Oak
 West, 1.55' -"Survey Marker" witness post
 East (alg. Sec. line), 60.00' -Concrete Monument with Brass Cap Stamped B13 W.C. T10N-R9E

Signed by Lionel Roy Emery
 Surveyor's Michigan License No. 24593

Date Nov. 7, 1994

APPROVED
11-7-94
J.M.A.



COPY

COPY