

DEC 07 1994

COMMISSION

1994 REMONUMENTATION PROGRAM
LAND CORNER RECORDATION CERTIFICATE

Filing Requirement of Act 74, Mich. P.A. 1970

For corners in WATERTOWN TOWNSHIP

RECEIVED FOR RECORD
REGISTER NO. _____ PAGE NO. _____
FILING NO. #71
WATERTOWN TWP
4 NOV -9 PM 2:20
VIRGINIA M. McLAUGHLIN
TUSCOLA COUNTY
REGISTER OF DEEDS

<u>TUSCOLA</u> <small>(County)</small>	Located In:	Corner Code //
1. Public Land Survey	T10N R9E	C-13
	T _____ R _____	_____
	T _____ R _____	_____
	T _____ R _____	_____
2. Property Controlling in Section	S _____ T _____ R _____	_____
	S _____ T _____ R _____	_____
3. Miscellaneous Property in Sec.	S _____ T _____ R _____	_____
	S _____ T _____ R _____	_____
4. Lot No. _____, Recorded Plat _____		
5. Private Claims _____		

Register of Deeds Stamp & File Number

A	B	C	D	E	F	G	H	I	J	K	L	M
2	6	5	4	3	2	1						
3												
4	7	8	9	10	11	12						
5												
6	18	17	16	15	14	13						
7												
8	19	20	21	22	23	24						
9												
10	30	29	28	27	26	25						
11												
12	31	32	33	34	35	36						
13												

I, Lionel Roy Emery in a field survey on May 16, 1994, do hereby certify that under requirements of P.A. 74, Michigan P.A. of 1970, the corner points mentioned in lines 1 and 2 above were in conformance with regulations and rules therefore as required in the current manual of survey instructions of the United States Department of the Interior, Bureau of Land Management or by a decree of a Court of Law and/or that the corner points mentioned in lines 3, 4 and 5 above were in conformance with the rules of the Michigan Board of Land Surveyors or by a Decree of a Court of Law; established, re-established, monumented, re-monumented, recovered, found as expressed below:

NOTE: Not more than 4 corners, all in the same town and range, may be recorded on this certificate.

- A. Description of original monument and accessories and/or subsequent restoration:
 1834 (Gov't. Land Office Notes) Harvey Parke, D.S. -Set post cor. Sections 31,32- pine20 N71½W 29 W. Oak 14 N74E 41½
 1898, March (County Surveyor's Record, pages 318 and 319, Tuscola County) George B. Felton, County Surveyor -from B.T's.- Perpetuated by: 2 pieces of boxing from old Engine & W. Crockery cor.
 1898, April (County Surveyor's Record, pages 320 and 321, Tuscola County) George B. Felton, County Surveyor -from B.T's.- Accessories same as previous Survey.
 1972 (Survey -Liber 1 of Surveys, pages 612-614, Tuscola County) Harold N. Elrich, P.S. 18986 -Found Steel Post- West 38.54' 14" Oak; N30°E 7.94' 8" Poplar; S70°E 22.55' 18" Maple
 1972 (Land Corner Recordation Certificate, Tuscola County) Harold N. Elrich, P.S. 18986 Marker and accessories same as above Survey ---See over for Continuation of Section A.
- B. Description of corner evidence found and/or method applied in restoring or reestablishing corner:

Found Steel post marker from remaining accessories as given by Elrich and Dunton.

Found Steel (fence) post not accepted as marking corner. Retraced Felton's line between Sections 31 and 32 and found Stone (1.5' x 1.2' x 1.0') at surface 0.97 chains Easterly of Water's Edge of "Hart Lake" (Parke's measurement was noted as 0.90 chains). Rolled stone over and dug beneath and found nail, pieces of decayed wood and one piece of Green plate or cup. --Accepted this position as best evidence of original corner location.

- C. Description of monument for corner and accessories established to perpetuate locating the position of the corner:
 Removed found items from excavation and placed Standard Tuscola County Concrete Monument with 2" Brass Cap stamped C 13 T10N-R9E
 N52°E, 22.41' -T.C. Remon. tag in Northwest face of 8" Ash
 S82°E, 13.04' -T.C. Remon. tag in South face of 5" Ash
 S60°W, 15.51' -T.C. Remon. tag in Northwest face of 26" Oak
 N05°E, 18.26' -T.C. remon. tag in East face of 10" Ash
 West, 1.0' -"Survey Marker" witness post
 S60°E, 29.06' -Found Steel fence post

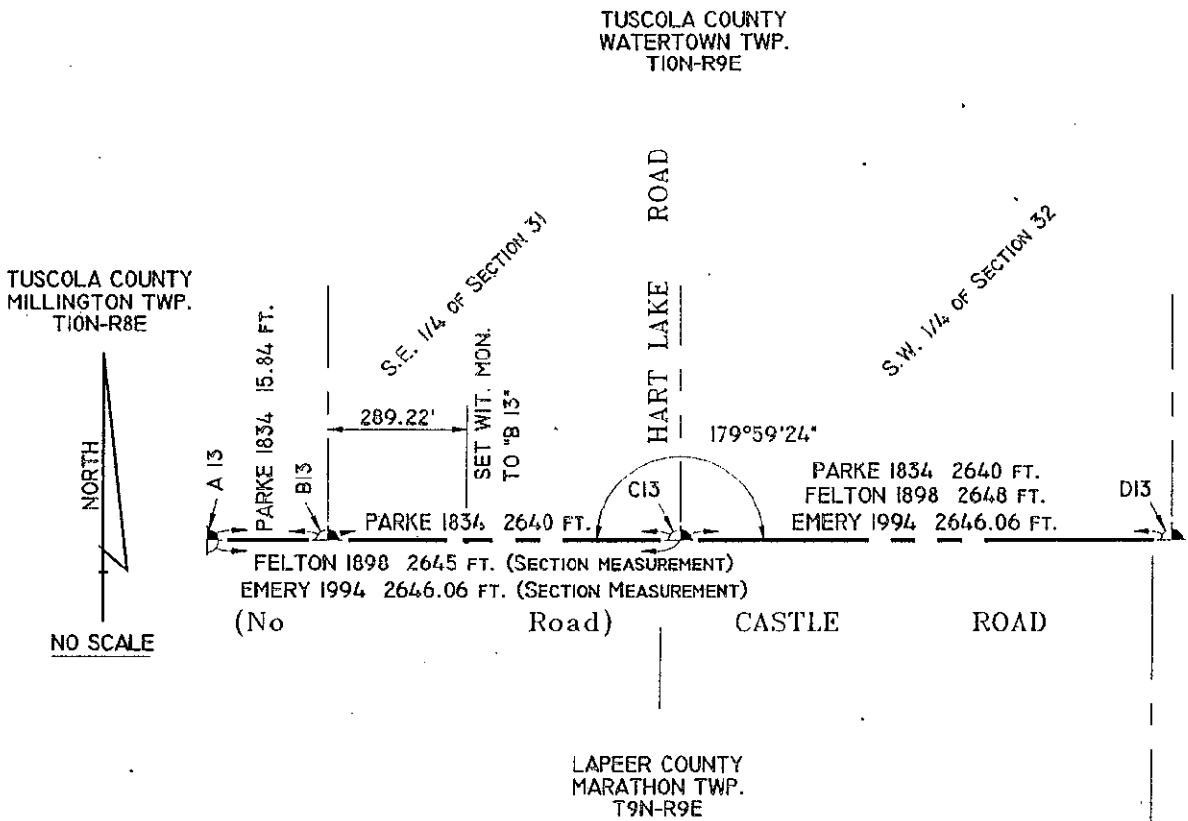


Signed by Lionel Roy Emery Date Nov. 7, 1994

Surveyor's Michigan License No. 24593

APPROVED
11-7-94
JMA
JMA

1979 (Survey -Liber 503, page 520, Tuscola County) Kenneth D. Dunton, P.S. 23503 -found steel post in place- accessories are same as shown on Elrich Survey.



COPY