

COPY

DEC 07 1994

1994 REMONUMENTATION PROGRAM
LAND CORNER RECORDATION CERTIFICATE

Filing Requirement of Act 74, Mich. P.A. 1970

For corners in **WATERTOWN TOWNSHIP**

TUSCOLA Located In: _____ Corner Code 77
(County)

1. Public Land Survey T 10N R 9E F-13
T _____ R _____
T _____ R _____
T _____ R _____

2. Property Controlling S _____ T _____ R _____
in Section S _____ T _____ R _____

3. Miscellaneous S _____ T _____ R _____
Property in Sec. S _____ T _____ R _____

RECEIVED FOR RECORDING
LIBER NO. _____ PAGE NO. _____
FILING NO. # 74
WATERTOWN TWP
94 NOV -9 PM 2:21
VIRGINIA H. MCCLAREN
TUSCOLA COUNTY
REGISTER OF DEEDS

Register of Deeds Stamp & File Number

4. Lot No. _____, Recorded Plat _____
5. Private Claims _____

	A	B	C	D	E	F	G	H	I	J	K	L	M
2	6	5	4	3	2	1							
3													
4	7	8	9	10	11	12							
5													
6	18	17	16	15	14	13							
7													
8	19	20	21	22	23	24							
9													
10	30	29	28	27	26	25							
11													
12	31	32	33	34	35	36							
13													

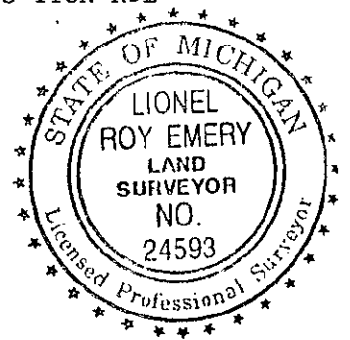
I, Lionel Roy Emery in a field survey on May 17, 19 94, do hereby certify that under requirements of P.A. 74, Michigan P.A. of 1970, the corner points mentioned in lines 1 and 2 above were in conformance with regulations and rules therefore as required in the current manual of survey instructions of the United States Department of the Interior, Bureau of Land Management or by a decree of a Court of Law and/or that the corner points mentioned in lines 3, 4 and 5 above were in conformance with the rules of the Michigan Board of Land Surveyors or by a Decree of a Court of Law; established, re-established, monumented, re-monumented, recovered, found as expressed below:

NOTE: Not more than 4 corners, all in the same town and range, may be recorded on this certificate.

A. Description of original monument and accessories and/or subsequent restoration:
 1834 (Gov't. Land Office Notes) Harvey Parke, D.S. -set Quarter Sec. post- Tamarack 9 N65E 41; Tamarack 11 N55W 21½
 1892 (Tuscola County Surveyor's Record, Pages 192 and 193) G.B. Felton, County Surveyor- Corner identified from bearing trees- Maple 12", S14½W 7½ links - Post and Crockery at corner

B. Description of corner evidence found and/or method applied in restoring or reestablishing corner:
 Dug and probed at mid-point of South section line-found nothing.
 Reestablished by single proportion measure.

C. Description of monument for corner and accessories established to perpetuate locating the position of the corner:
 Set Standard Tuscola County Concrete Monument w/ 2" Brass Cap stamped E13 T10N R9E
 N02°W, 59.73'-T.C. Re-mon. tag in East face of 9" White Birch
 N65°E, 59.61'-T.C. Re-mon. tag in So. face 20" Maple
 S06°W, 32.00'-T.C. Re-mon. tag in West face 8" White Birch
 S40°E, 41.65'-T.C. Re-mon. tag in NE face 12" Elm
 Witness Post at North edge of Monument

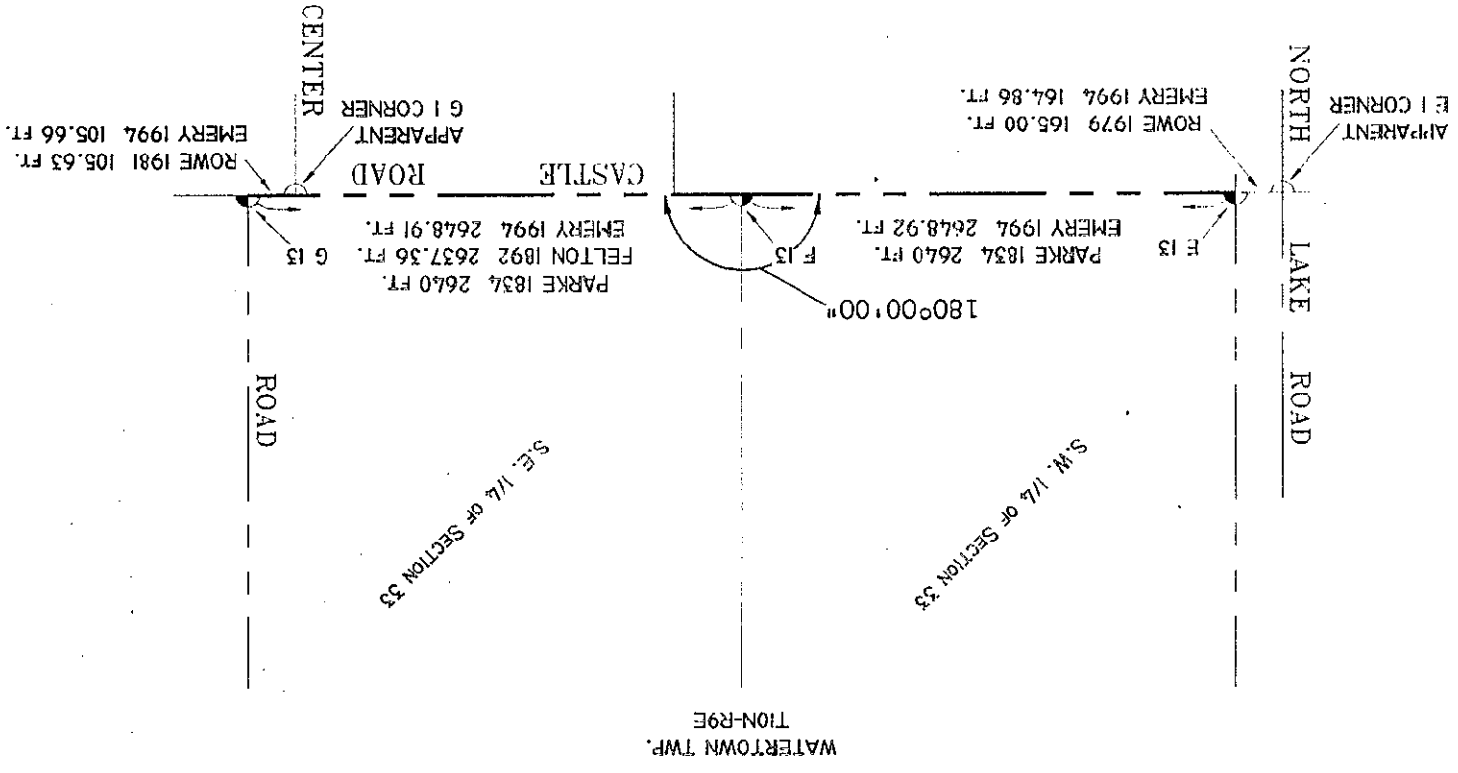


Signed by Lionel Roy Emery
 Surveyor's Michigan License No. 24593

Date July 11, 1994

APPROVED
7-11-94
[Signature]

SECTION 4, T9N-R9E
MARATHON TOWNSHIP
LAPEER COUNTY



COPY