

OCT 20 1994

COMMISSION

1994 REMONUMENTATION PROGRAM
LAND CORNER RECORDATION CERTIFICATE
Filing Requirement of Act 74, Mich. P.A. 1970

For corners in WATERTOWN TOWNSHIP

TUSCOLA (County)	Located In:	Corner Code #
1. Public Land Survey	T 10N. R9E	G-13
	T R	
	T R	
	T R	
2. Property Controlling in Section	S T R	
	S T R	
3. Miscellaneous Property in Sec.	S T R	
	S T R	

RECEIVED FOR RECORD
LIBER NO. _____ PAGE NO. _____
FILING NO. # 56
WATERTOWN TWP
OCT 14 1994 AHID: 33
VIRGINIA H. ROLAND
TUSCOLA COUNTY
REGISTER OF DEEDS
Register of Deeds Stamp & File Number

- 4. Lot No. _____, Recorded Plat _____
- 5. Private Claims _____

	A	B	C	D	E	F	G	H	I	J	K	L	M
2	6	5	4	3	2	1							
3													
4	7	8	9	10	11	12							
5													
6	18	17	16	15	14	13							
7													
8	19	20	21	22	23	24							
9													
10	30	29	28	27	26	25							
11													
12	31	32	33	34	35	36							
13													

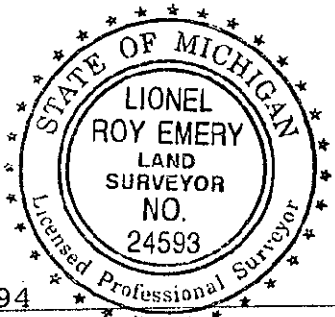
I, Lionel Roy Emery in a field survey on May 17, 19 94, do hereby certify that under requirements of P.A. 74, Michigan P.A. of 1970, the corner points mentioned in lines 1 and 2 above were in conformance with regulations and rules therefore as required in the current manual of survey instructions of the United States Department of the Interior, Bureau of Land Management or by a decree of a Court of Law and/or that the corner points mentioned in lines 3, 4 and 5 above were in conformance with the rules of the Michigan Board of Land Surveyors or by a Decree of a Court of Law; established, re-established, monumented, re-monumented, recovered, found as expressed below:

NOTE: Not more than 4 corners, all in the same town and range, may be recorded on this certificate.

- A. Description of original monument and accessories and/or subsequent restoration:
- 1834 (Gov't. Land Office Notes) Harvey Parke, D.S. -set post cor. Sections 33 and 34- Sugar 16 N24E 30; Lynn 20 N54 1/2 W 46
 - 1892 (Tuscola County Surveyor's Record, pages 192 and 193) G.B. Felton, County Surveyor- "corner prev. set" no accessories given
 - 1981 (Survey- Liber 516, pages 329 and 330) David Rowe, P.S. 11192 -set 1/2" re-rod- S40°W, 38.32'-PK nail in TP; N55°W, 75.34'-PK nail in TP; N50°E, 64.41'-PK nail in 24" Maple
 - 1981 (Land Corner Recordation Certificate) David Rowe, P.S. 11192- set 1/2" re-rod with accessories same as above 1981 survey

- B. Description of corner evidence found and/or method applied in restoring or reestablishing corner:
- Found 1/2" re-rod and accessories at intersection of Castle and Center Roads
 - Accepted 1/2" re-rod as marking original corner

- C. Description of monument for corner and accessories established to perpetuate locating the position of the corner:
- Removed 1/2" re-rod and replaced with Standard Tuscola County Concrete Monument w/ 2" Brass Cap stamped G13 T10N R9E
 - N15°E, 115.43'-T.C. Re-mon. tag in East face 16" Ash
 - N60°E, 66.09' -T.C. Re-mon.tag in NW Root 56" Maple
 - S20°W, 23.63' -East leg of directional arrow sign
 - N60°W, 75.33' -T.C. Re-mon. tag in SW face of Telephone pole stub



Signed by Lionel Roy Emery

Date October 4, 1994

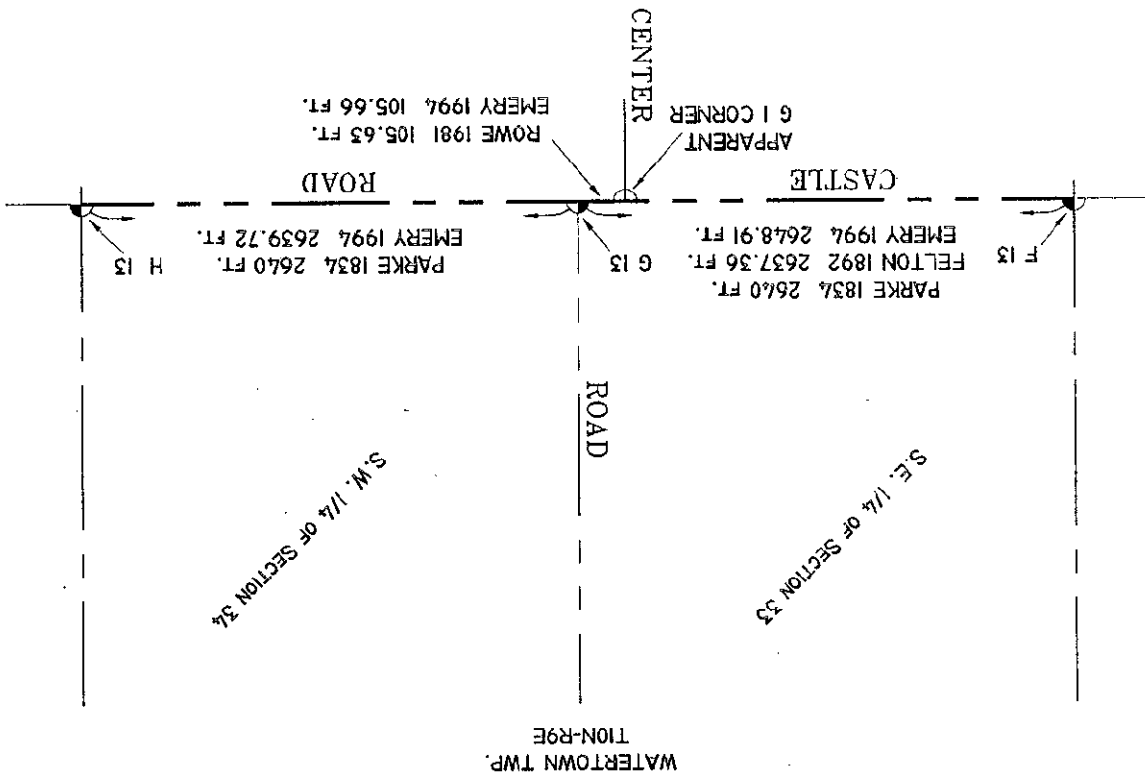
Surveyor's Michigan License No. 24593

APPROVED
7-11-94

MARATHON TOWNSHIP
LAFER COUNTY

SECTION 3, T9N-R9E

SECTION 4, T9N-R9E



NO SCALE

