

OCT 20 1994

COMMISSION

1994 REMONUMENTATION PROGRAM  
LAND CORNER RECORDATION CERTIFICATE  
Filing Requirement of Act 74, Mich. P.A. 1970

For corners in WATERTOWN TOWNSHIP

RECEIVED FOR RECORD  
LIBER NO. \_\_\_\_\_ PAGE NO. \_\_\_\_\_  
FILING NO. # 55  
WATERTOWN TWP  
91 OCT -4 AM 10:33  
VIRGINIA H. McLAREN  
TUSCOLA COUNTY  
REGISTER OF DEEDS

Register of Deeds Stamp & File Number

TUSCOLA Located In: \_\_\_\_\_ Corner Code # H-13  
(County)

1. Public Land Survey T 10N R 9E \_\_\_\_\_  
T \_\_\_\_\_ R \_\_\_\_\_  
T \_\_\_\_\_ R \_\_\_\_\_  
T \_\_\_\_\_ R \_\_\_\_\_

2. Property Controlling S \_\_\_\_\_ T \_\_\_\_\_ R \_\_\_\_\_  
in Section S \_\_\_\_\_ T \_\_\_\_\_ R \_\_\_\_\_

3. Miscellaneous S \_\_\_\_\_ T \_\_\_\_\_ R \_\_\_\_\_  
Property in Sec. S \_\_\_\_\_ T \_\_\_\_\_ R \_\_\_\_\_

4. Lot No. \_\_\_\_\_, Recorded Plat \_\_\_\_\_

5. Private Claims \_\_\_\_\_

A	B	C	D	E	F	G	H	I	J	K	L	M
2	6	5	4	3	2	1						
3												
4	7	8	9	10	11	12						
5												
6	18	17	16	15	14	13						
7												
8	19	20	21	22	23	24						
9												
10	30	29	28	27	26	25						
11												
12	31	32	33	34	35	36						
13												

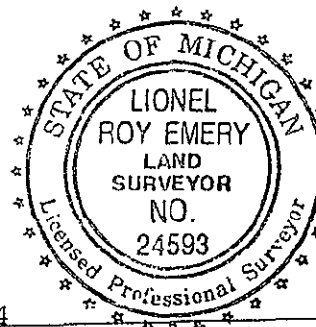
I, Lionel Roy Emery in a field survey on May 17, 19 94, do hereby certify that under requirements of P.A. 74, Michigan P.A. of 1970, the corner points mentioned in lines 1 and 2 above were in conformance with regulations and rules therefore as required in the current manual of survey instructions of the United States Department of the Interior, Bureau of Land Management or by a decree of a Court of Law and/or that the corner points mentioned in lines 3, 4 and 5 above were in conformance with the rules of the Michigan Board of Land Surveyors or by a Decree of a Court of Law; established, re-established, monumented, re-monumented, recovered, found as expressed below:

NOTE: Not more than 4 corners, all in the same town and range, may be recorded on this certificate.

A. Description of original monument and accessories and/or subsequent restoration:  
1834 (Gov't. Land Office Notes) Harvey Parke, D.S. -set quarter sec. post- Beech 20 N32W, 29½';  
Beech 8 N69E 24  
No subsequent restoration

B. Description of corner evidence found and/or method applied in restoring or reestablishing corner:  
Reestablished by single proportion measure.

C. Description of monument for corner and accessories established to perpetuate locating the position of the corner:  
Set Standard Tuscola County Concrete Monument w/ 2" Brass Cap stamped H13 T10N.R9E  
Castle Road East/West  
N65°E, 111.90'- T.C. Re-mon. tag in SE face Power Pole  
S45°E, 126.00'- T.C. Re-mon. tag in SW face Power Pole  
S65°W, 125.00'- T.C. Re-mon. tag in North face 10" Ash  
N10°W, 21.05'- T.C. Re-mon. tag in East face 5' Cedar



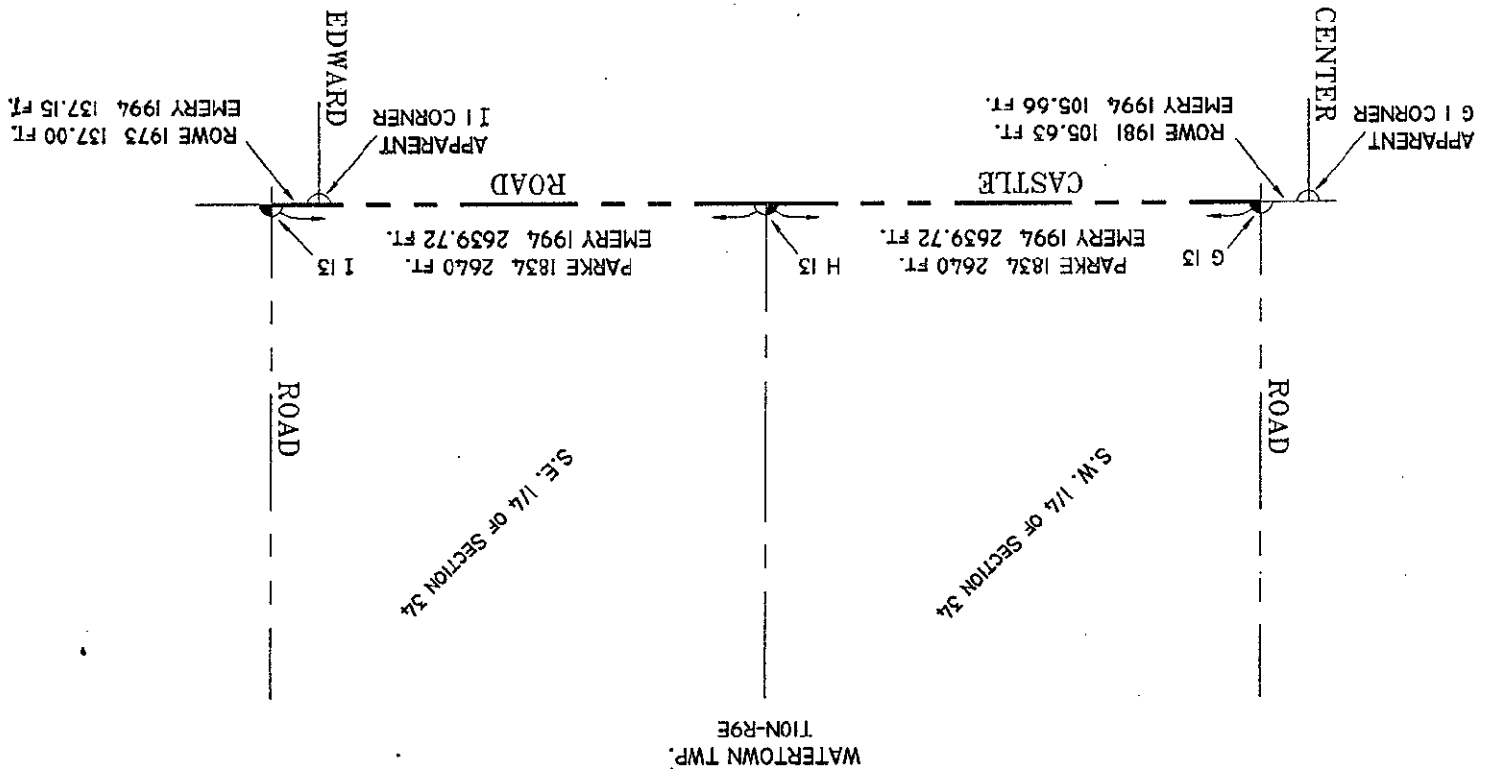
Signed by Lionel Roy Emery Date October 4, 1994

Surveyor's Michigan License No. 24593

APPROVED  
7-11-94

7271A 133

SECTION 3, T9N-R9E  
MARATHON TOWNSHIP  
LAPEER COUNTY



NO SCALE

