

1999/2000 REMONUMENTATION PROGRAM
LAND CORNER RECORDATION CERTIFICATE
 Filing Requirement of Act 74, Mich. P.A. 1970

For corners in Watertown Township

Tuscola (County)	Located in:	Corner Code #
1. Public Land Survey	T10N R9E	K-7
	T R	
	T R	
	T R	
2. Property Controlling in Section	S T R	
	S T R	
3. Miscellaneous Property in Sec.	S T R	
	S T R	

RECEIVED FOR RECORD
 LIBER NO. _____ PAGE NO. _____
 FILE NO. # 816 Watertown Twp
 00 NOV -9 AM 9:43
James M. Dunton
 TUSCOLA COUNTY
 REGISTER OF DEEDS

Register of Deeds Stamp & File Number

4. Lot No. _____, Recorded Plat _____
 5. Private Claims _____

Lionel Roy Emery
 I, P.S. #24593, in a field survey on Aug. 27, 1999 do hereby state that under requirements of P.A. 74, Michigan P.A. of 1970, the corner points mentioned in lines 1 and 2 above were in conformance with regulations and rules therefore as required in the current manual of survey instructions of the United States Department of the Interior, Bureau of Land Management or by a decree of a Court of Law and/or that the corner points mentioned in lines 3, 4 and 5 above were in conformance with the rules of the Michigan Board of Land Surveyors or by a Decree of a Court of Law, established, re-established, monumented, recovered, found as expressed below:

A	B	C	D	E	F	G	H	I	J	K	L	M
1												
2	6	5	4	3	2	1						
3												
4	7	8	9	10	11	12						
5												
6	18	17	16	15	14	13						
7												
8	19	20	21	22	23	24						
9												
10	30	29	28	27	26	25						
11												
12	31	32	33	34	35	36						
13												

NOTE: Not more than 2 corners, all in the same town and range, may be recorded on this certificate.

A. Description of original monument and accessories and/or subsequent restoration:

Aug. 1, 1834 G.L.O. notes by H. Burnham, D.S. Set post corner to Secs. 13, 14, 23 & 24, Sugar 20" S70°E 4 links, Beech 8" N32°W 20 links. June 23 thru 27, 1903 Survey of Sec. 23 by L. M. Brumley, County Surveyor, previously established, iron bar 1 1/4 x 1 1/4 at corner, Maple 15" N22°W 141 1/2 links. Second filing of above by Brumley indicates all same except states iron bar is 20" long. July 2, 1971 Survey L-1, P-129 by Robert G. Kay, P.S. #14096, no mention of object found or set, N45°W 55.2' P.P., N55°E 49.8' stop sign post, S45°W 62.8' P.F. July 5, 1972 Survey L-2, P-25 by Bernard Henderson, P.S. #16043, found P.K. nail, N60°E 155.8' P. Pole, S50°W 62.91' P. Pole, N35°W 55.15' P. Pole.

Sec. A Con't on back of form.

B. Description of corner evidence found and/or method applied in restoring or reestablishing corner:

Found "T" iron in monument box and accepted same as the best evidence of the original corner position.

C. Description of monument for corner and accessories established to perpetuate locating the position of the corner:

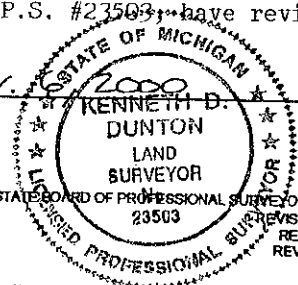
Set 5/8" rod and standard brass cap stamped K-7, T10N-R9E over found "T" iron. Encased rod and cap in concrete in monument box.

- N80°E 155.9' fnd. nail & disc in west face power pole.
- N50°E 44.12' set remon. tag and spike in SE face power pole.
- S60°E 59.52' fnd. 1/2" iron rod & cap #37276.
- S45°W 48.21' set remon. tag & spike in NW face power pole.
- N30°W 55.17' set remon. tag & spike in SW face tele. power stub.

Due to the untimely illness of Mr. Emery, I, Kenneth D. Dunton, P.S. #23503, have reviewed Mr. Emery's field notes and have prepared this form.

Signed by *Kenneth D. Dunton* Date Nov. 2000
 Surveyor's Michigan License No. 23503

APPROVED *J.M.T.*
11/6/2000 *K.M.L.*
R.L.B.



FORM APPROVED BY MICHIGAN STATE BOARD OF PROFESSIONAL SURVEYORS, JAN. 28, 1971
 REVISED MAY 14, 1975
 REVISED JAN. 1983
 REVISED OCT., 1995

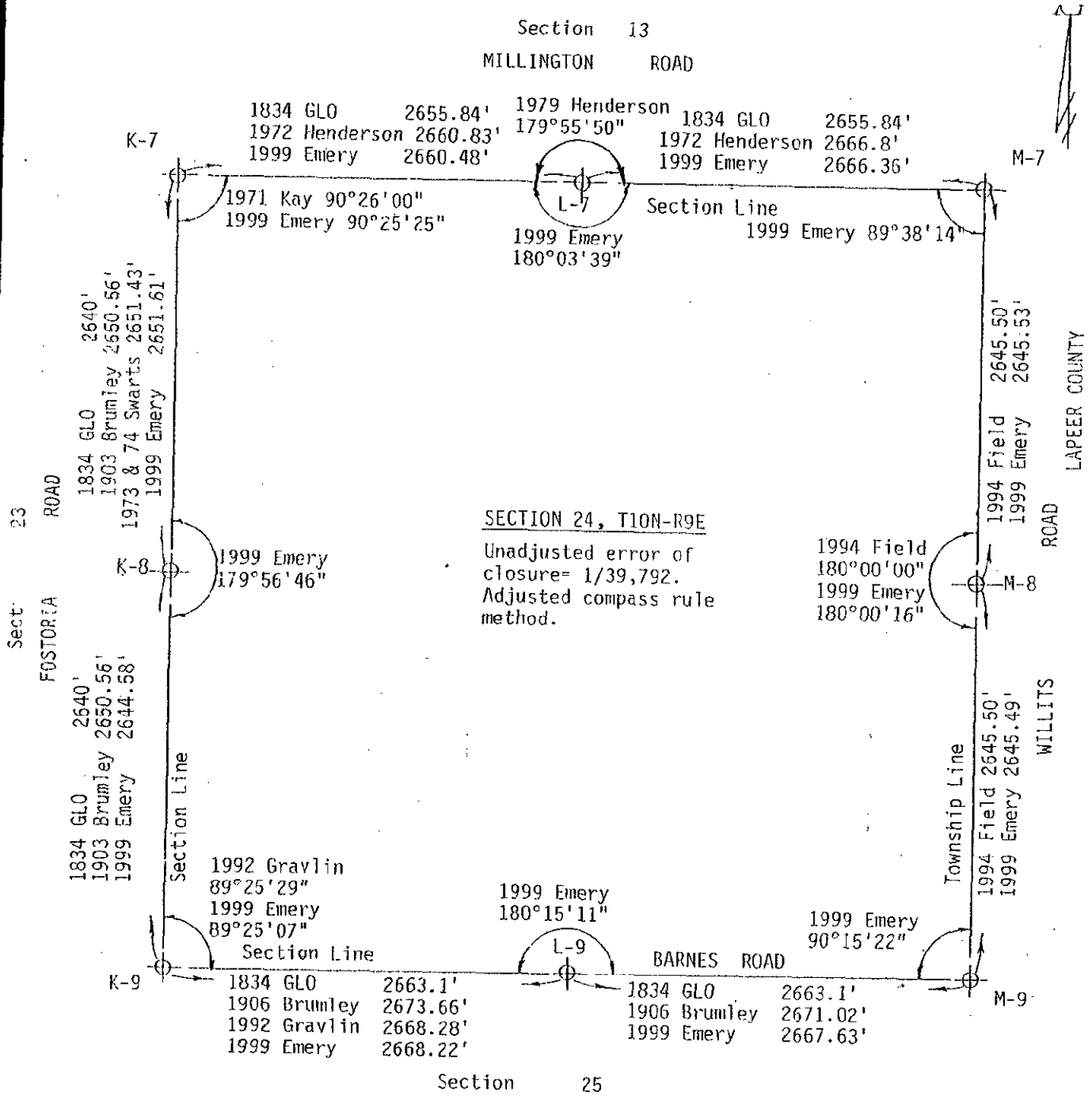
COPY

SURVEY & REMONUMENTATION

FEB 08 2001

SECTION

July 5, 1972 L.C.R.C. #6 by Bernard Henderson, P.S. #16043, object and accessories same as Survey L-2, P-25. Dec. 7, 1973 Survey L-439, P-55 by Stephen W. Swarts, P.S. #16945, found P.K. nail, N60°E 49.9' stop sign, S50°W 62.9' utility pole, N45°W 55.2' utility pole. Feb. 13, 1974 Survey L-441, P-493 by Stephen W. Swarts, P.S. #16945, found P.K. nail recorded L.C.R.C. #6. Sept. 8, 1977 Survey L-481, P-234 by Carl H. Carlson, P.S. #9189, found P.K. nail, N30°W 55.37' spike with flag in SE face of tele. pole, S50°W 63.16' spike with flag in SE face tele. pole, N70°E 155.80' spike with cap in west side power pole. Sept. 13, 1978 Survey L-492, P-1163 by David T. Rowe, P.S. #11192, P.K. nail, same accessories as Survey L-2, P-25. June 13, 1988 Survey L-585, P-1479 by Earl E. Gravlin, P.S. #23510, found iron, no accessories given. April 3, 1992 Survey L-629, P-1097 by Harold N. Elrich, P.S. #18986, found P.K. nail, N60°E 155.8' nail in power pole, N35°W 55.15' nail in power pole, S45°W 61.10' NE cor. tele. ped. Feb. 23, 1993 Survey L-691, P-737 by Earl E. Gravlin, P.S. #23510, found "T" iron, accessories same as L-439, P-55. Oct. 23, 1998 Survey L-757, P-199 by Jonathan M. Field, P.S. #37276, found "T" iron in mon. box, S60°E 155.81' nail & tag in W. face P. Pole, S50°W 151.43' NE cor. of garage at house #8510, N35°W 55.21' P. K. nail in top of cut off T. pole with ph. riser, S60°E 59.52' 1/2" rod & cap #37276.



SURVEY & DEMONUMENTATION

FEB 08 2001

SECTION