

1999/2000 REMONUMENTATION PROGRAM

LAND CORNER RECORDATION CERTIFICATE
Filing Requirement of Act 74, Mich. P.A. 1970

For corners in Watertown Township

Tuscola (County)	Located In:	Corner Code #
1. Public Land Survey	T10NR 9E	K-9
	T R	
	T R	
	T R	
	T R	
2. Property Controlling in Section	S T R	
	S T R	
3. Miscellaneous Property in Sec.	S T R	
	S T R	

RECEIVED FOR RECORD
LIBER NO. _____ PAGE NO. _____
FILE NO. #83 Watertown Twp
00 NOV -9 AM 9:43
TUSCOLA COUNTY
REGISTER OF DEEDS
Joseph M. Dunton

Register of Deeds Stamp & File Number

4. Lot No. _____, Recorded Plat _____
5. Private Claims _____

Lionel Roy Emery
P. S. #24593, in a field survey on Aug. 27, 1999 do hereby state that under requirements of P.A. 74, Michigan P.A. of 1970, the corner points mentioned in lines 1 and 2 above were in conformance with regulations and rules therefore as required in the current manual of survey instructions of the United States Department of the Interior, Bureau of Land Management or by a decree of a Court of Law and for that the corner points mentioned in lines 3, 4 and 5 above were in conformance with the rules of the Michigan Board of Land Surveyors or by a Decree of a Court of Law; established, re-established, monumented, recovered, found as expressed below:

NOTE: Not more than 2 corners, all in the same town and range, may be recorded on this certificate.

	A	B	C	D	E	F	G	H	I	J	K	L	M
1													
2	6		5		4		3		2		1		
3													
4	7		8		9		10		11		12		
5													
6	18		17		16		15		14		13		
7													
8	19		20		21		22		23		24		
9													
10	30		29		28		27		26		25		
11													
12	31		32		33		34		35		36		
13													

A. Description of original monument and accessories and/or subsequent restoration:
Aug. 1, 1834 G.L.O. notes by H. Burnham, D.S. Set post corner Secs. 23, 24, 25 & 26, Sugar 8" N46°W 16 links, Sugar 14" S38°E 22 links. April 18, 1899 Survey of Sec. 26 by G. B. Fulton, County Surveyor, previously set by me from B.T.'s stone surrounded with brick at corner. June 23 thru 27, 1903 Survey of Sec. 23 by L. M. Brumley, County Surveyor, (two files on Sec. 23, both same information for this corner), previously established, stone surrounded by bricks at corner. March 30, 31 & April 3, 1906 Survey of North 1/2 of Sec. 25 by L. M. Brumley, County Surveyor, see Sec. 26, T10N-R9E. Oct. 12, 1972 Survey L-2, P-227 by Harold N. Elrich, P. S. #18986, no mention of object found or set, S35°E 44.60' P. Pole, N40°E 37.83' P. Pole, N50°W 59.09' P. Pole. Sec. A con't on back of form

B. Description of corner evidence found and/or method applied in restoring or reestablishing corner:
Found 1/2" and 5/8" re-rods in monument box and accepted 1/2" re-rod as the best evidence of the original corner position. (Accessories best fit position of 1/2" re-rod.)

C. Description of monument for corner and accessories established to perpetuate locating the position of the corner:
Set standard brass cap stamped K-9, T10N-R9E over found 1/2" re-rod. Encased rod & cap in concrete in monument box.
N55°E 37.61' set remon. tag & spike over fnd. tag in SE face util. pole stub.
S30°E 44.72' set remon. tag & spike over fnd. tag in SW face util. pole stub.
S60°W 58.79' set remon. tag & spike over fnd. tag in NW face util. pole stub.
N20°W 61.28' south edge steel post (fiber optics sign post).

Due to the untimely illness of Mr. Emery, I, Kenneth D. Dunton, P.S. #23503, have reviewed Mr. Emery's field notes and have prepared this form.

Signed by *Kenneth D. Dunton*
Surveyor's Michigan License No. 23503

Date Nov 6 2000

STATE OF MICHIGAN
KENNETH D. DUNTON
LAND SURVEYOR
No. 23503
LICENSED PROFESSIONAL SURVEYOR

APPROVED
11/6/2000
JMT
KML
RLB

FORM APPROVED BY MICHIGAN STATE BOARD OF PROFESSIONAL SURVEYORS, JAN. 28, 1971
REVISED MAY 14, 1975
REVISED JAN., 1983
REVISED OCT., 1995

COPY

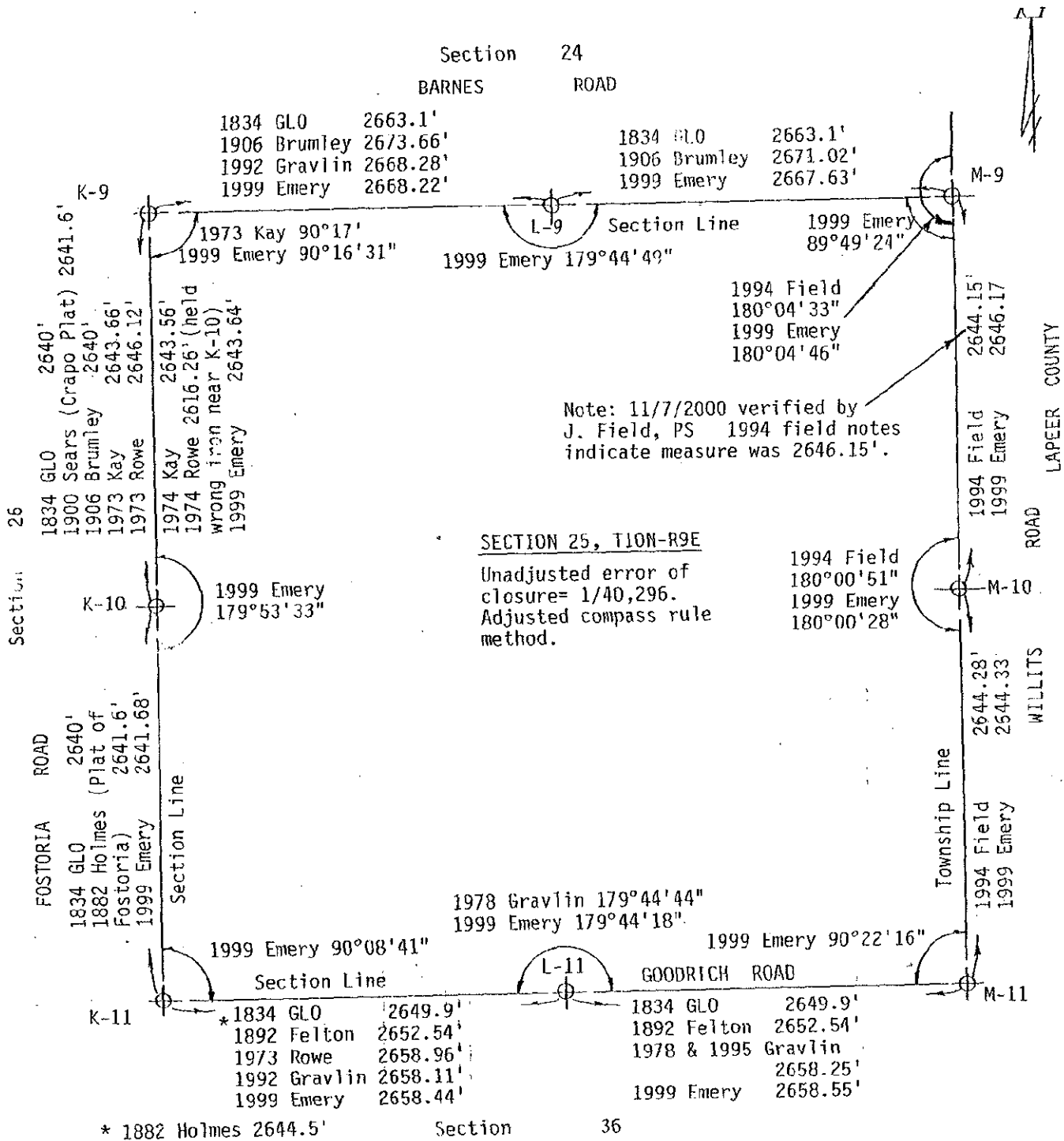
SURVEY & REMONUMENTATION

FEB 08 2001

SECTION

Sec. A Con't.

Oct. 12, 1972 L.C.R.C. #11 by Harold N. Elrich, P. S. #18986, found P.K. nail, accessories same as Survey L-2, P-227. March 2, 1973 Survey L-2, P-336 by Robert G. Kay, P.S. #14096, no mention of object found or set, N50°W 59.0' T.P., N45°E 37.8' T.P., S45°E 44.5' T.P.
 Dec. 11, 1973 Survey L-437, P-351 by David T. Rowe, P.S. #11192, no mention of object found or set, S35°E 34.53' P.P., S35°W 28.83' P.P., S60°W 34.15' 18" map. March 25, 1974 Survey L-439, P-304 by Robert G. Kay, P.S. #14096, says found, does not mention object, same accessories as L-2, P-336. Aug. 26, 1974 Survey L-445, P-807, 808 & 809 by David T. Rowe, P.S. #11192, re-rod, accessories same as L-2, P-227. Oct. 6, 1987 Survey L-579, P-1295 by Russell L. Brown, P.S. #24588, found 1/2" steel stake, same accessories as L-2, P-336.
 Dec. 16, 1992 Survey L-637, P-778, 779 & 780 by Earl E. Gravlin, P.S. #23510, found 1/2" re-rod, S35°E 44.6' nail in tele. pole, N40°E 37.50' nail in P. Pole, S45°W 58.55' nail in tele. pole. Mar. 27, 1997 Survey L-707, P-873, 874 & 875 by John M. Juras, P. S. #33980, 1/2" re-bar, S35°E 44.60' NW face P. Pole, N40°E 37.83' SW face P. Pole, N45°W 52.92' SE corner Ameritech Ped., S45°W 57.00' NE corner Ameritech Ped.



SURVEY & REMONUMENTATION

FEB 08 2001

SECTION