

1999/2000 REMONUMENTATION PROGRAM
LAND CORNER RECORDATION CERTIFICATE
 Filing Requirement of Act 74, Mich. P.A. 1970

For corners in Watertown Township

Tuscola (County)	Located in:	Corner Code #
1. Public Land Survey	T10N R9E	K-11
	T R	
	T R	
	T R	
	T R	
2. Property Controlling in Section	S T R	
	S T R	
3. Miscellaneous Property in Sec.	S T R	
	S T R	

RECEIVED FOR RECORD
 LIBER NO. _____ PAGE NO. _____
 FILE NO. # 80 Waterdown Twp.
 NOV - 9 AM 9:42
 TUSCOLA COUNTY
 REGISTER OF DEEDS

Register of Deeds Stamp & File Number

4. Lot No. _____, Recorded Plat _____
 5. Private Claims _____

Lionel Roy Emery
 I, P.S. #24593, in a field survey on Aug. 27, 1999 do hereby state that under requirements of P.A. 74, Michigan P.A. of 1970, the corner points mentioned in lines 1 and 2 above were in conformance with regulations and rules therefore as required in the current manual of survey instructions of the United States Department of the Interior, Bureau of Land Management or by a decree of a Court of Law and/or that the corner points mentioned in lines 3, 4 and 5 above were in conformance with the rules of the Michigan Board of Land Surveyors or by a Decree of a Court of Law; established, re-established, monumented, recovered, found as expressed below:

NOTE: Not more than 2 corners, all in the same town and range, may be recorded on this certificate.

	A	B	C	D	E	F	G	H	I	J	K	L	M
1													
2	6	5	4	3	2	1							
3													
4	7	6	5	4	3	2	1						
5													
6	10	9	8	7	6	5	4	3	2	1			
7													
8	19	18	17	16	15	14	13	12	11	10	9	8	7
9													
10	30	29	28	27	26	25	24	23	22	21	20	19	18
11													
12	31	30	29	28	27	26	25	24	23	22	21	20	19
13													

A. Description of original monument and accessories and/or subsequent restoration:

Aug. 1, 1834 G.L.O. notes by H. Burnham, D.S. Set post corner to Secs. 25, 26, 35 & 36, Beech 10" S46°W 15 links, Elm 9" N11°E 21 links. Mar. 1, 1882 (recording date) map of the Village of Postoria, surveyed by Charles Holmes, Surveyor, recorded in Liber 1 of Plats on Pages 45A & 46A, no mention of object found or set, North 2641.6' to corner K-10, note on plat: point of intersection of centerline of Foster and Crapo Avenues comes 7 1/2 ft. West and 11 8/10 feet South of corner of Secs. 25, 26, 35 & 36 T10N-R9E, West 2629.0' to centerline of Cherry Street, East 2644.5' to 1/4 post. Dec. 17, 1892 Survey of Sec. 36 by G. B. Felton, County Surveyor, previously set, long stone with 2 large stones underneath and brick at corner. No mention of accessories. Sec. A con't. on back of form.

B. Description of corner evidence found and/or method applied in restoring or reestablishing corner:

Found 1/2" re-rod in monument box and accepted same as the best evidence of the original corner position.

C. Description of monument for corner and accessories established to perpetuate locating the position of the corner:

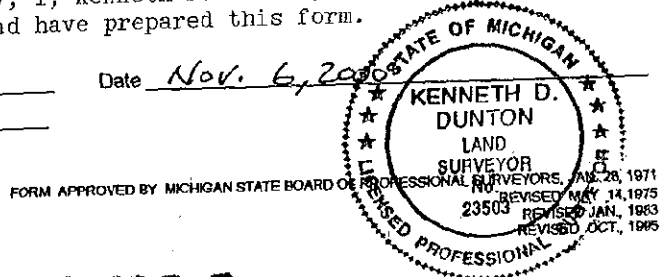
Placed standard brass cap stamped K-11, T10N-R9E over re-rod found. Encased rod & cap in concrete in monument box.
 N60°E 36.76' set remon. tag & spike over fnd. Rowe tag in South face P. Pole.
 S40°E 77.07' set remon. tag & spike over fnd. Rowe tag in NE face P. Pole.
 S50°W 62.20' face steel pipe post road name sign post.
 N70°W 87.03' set remon. tag & spike in SW face utility pole stub.
 S32°30'W 14' ± found 1/2" re-rod at intersection of centerline of rights of way.

Note: Due to the untimely illness of Mr. Emery, I, Kenneth D. Dunton, P. S. #23503, have reviewed Mr. Emery's field notes and have prepared this form.

Signed by Kenneth D. Dunton
 Surveyor's Michigan License No. 23503

Date Nov. 6, 2000

APPROVED
 11/6/2000
 J.M.A.
 K.M.L.
 R.L.B.



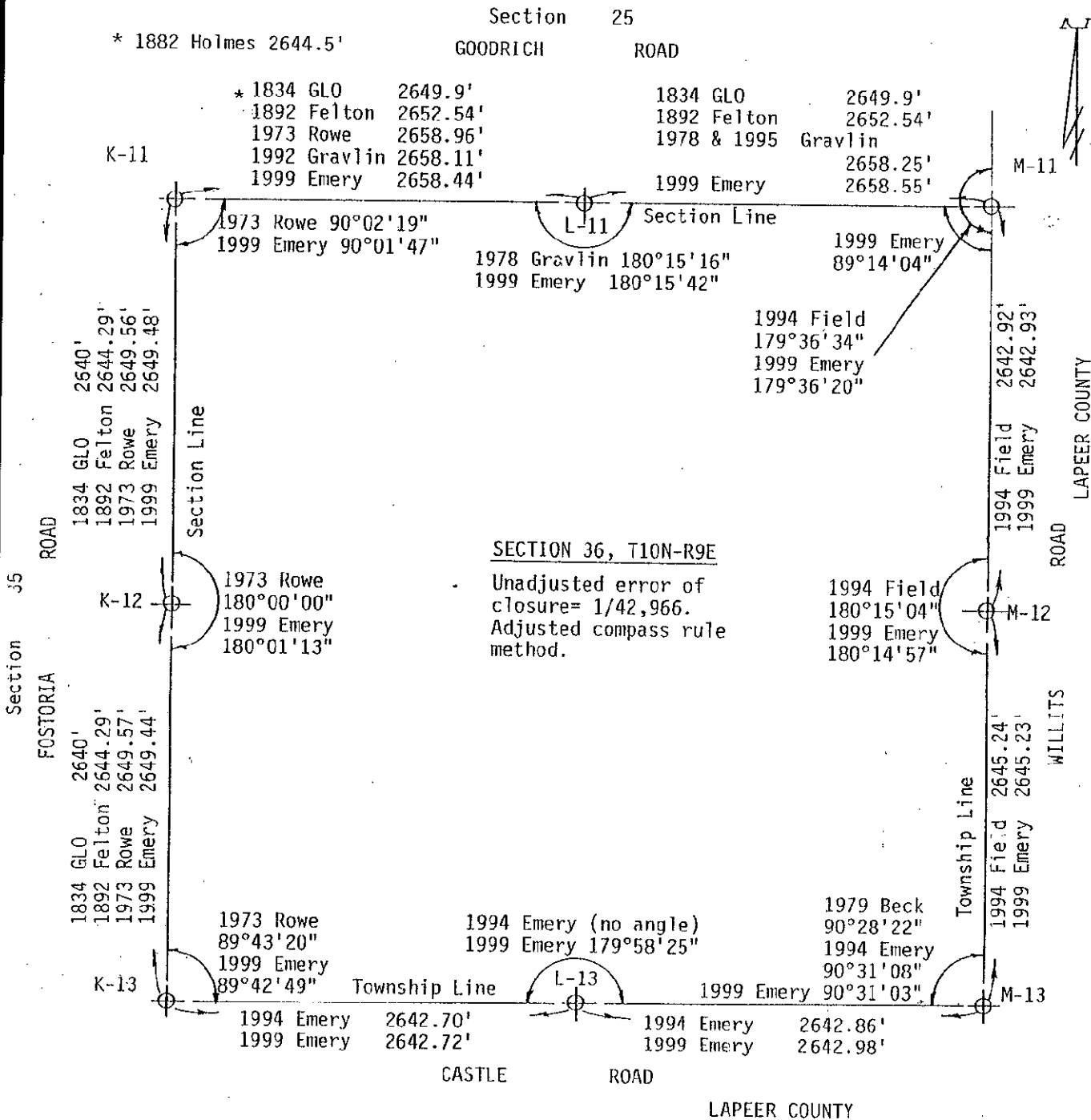
COPY

SURVEY & REMONUMENTATION

FEB 08 2001

SECTION

April 19, 1899 Survey of Section 26 by G. B. Felton, County Surveyor, no mention of object found or set or accessories. Feb. 20 & July 17, 1973 Survey L-433, P-10 thru 15 by David T. Rowe, P.S. #11192, 1/2" re-rod, S70°W 105.55' nail in P.P., S50°E 76.70' nail in P.P., S40°W 65.58' nail in P.P. Sept. 5, 1973 (recording date) Plat. of "Lakshill Farms", Liber 4 of Plats on Pages 18, 19 & 20, surveyed by David T. Rowe, P.S. #11192, no mention of object found or set or accessories. Jan. 24, 1992 Survey L-637, P-772 & 773 by Earl E. Gravlin, P.S. #23510, found iron, S45°W 65.65' nail power pole, N70°W 86.70' nail tele. pole, S60°E 76.78' nail power pole. Aug. 25, 1992 Survey L-637, P-768 & 769 by Earl E. Gravlin, P.S. #23510, found 1/2" re-rod, S70°W 105.55' nail in P.P., S50°E 76.70' nail in P.P., East 2.0' centerline of pavement.



SURVEY & REMONUMENTATION

FEB 08 2001

SECTION