

SURVEY & REMONUMENTATION

OCT 20 1994

1994 REMONUMENTATION PROGRAM
LAND CORNER RECORDATION CERTIFICATE
Filing Requirement of Act 74, Mich. P.A. 1970

COMMISSION

For corners in WATERTOWN TOWNSHIP

RECEIVED FOR RECORD
LIBER NO. _____ PAGE NO. _____
FILING NO. # 52
WATERTOWN TWP
9th OCT - 4 AM 10:34
VIRGINIA N. McLAGHER
TUSCOLA COUNTY
REGISTER OF DEEDS

Register of Deeds Stamp & File Number

<u>TUSCOLA</u> (County)	Located In:	Corner Code #/
1. Public Land Survey	T 10N R 9E	K-13
	T _____ R _____	_____
	T _____ R _____	_____
	T _____ R _____	_____
2. Property Controlling in Section	S _____ T _____ R _____	_____
	S _____ T _____ R _____	_____
3. Miscellaneous Property in Sec.	S _____ T _____ R _____	_____
	S _____ T _____ R _____	_____
4. Lot No. _____, Recorded Plat _____		
5. Private Claims _____		

	A	B	C	D	E	F	G	H	I	J	K	L	M
2	6		5		4		3		2		1		
3													
4	7		8		9		10		11		12		
5													
6	18		17		16		15		14		13		
7													
8	19		20		21		22		23		24		
9													
10	30		29		28		27		26		25		
11													
12	31		32		33		34		35		36		
13													

I, Lionel Roy Emery in a field survey on May 18, 1994, do hereby certify that under requirements of P.A. 74, Michigan P.A. of 1970, the corner points mentioned in lines 1 and 2 above were in conformance with regulations and rules therefore as required in the current manual of survey instructions of the United States Department of the Interior, Bureau of Land Management or by a decree of a Court of Law and/or that the corner points mentioned in lines 3, 4 and 5 above were in conformance with the rules of the Michigan Board of Land Surveyors or by a Decree of a Court of Law; established, re-established, monumented, re-monumented, recovered, found as expressed below:

NOTE: Not more than 4 corners, all in the same town and range, may be recorded on this certificate.

A. Description of original monument and accessories and/or subsequent restoration:

- 1834 (Gov't. Land Office Notes) Harvey Parke, D.S. -set post cor. Sections 35 and 36- Beech 6 N36E 12; Beech 7 N49 1/2 W 38
- 1951 (Road Plans for Fostoria Road on file) Roscoe Black, Highway Engineer -Section cor. accessories at cor. Sections 35 and 36- House cor. S53°W, 70.7'; 6" Elm N54°W 45.9' (no indication of corner marker on plan)
- 1971 (Survey-Liber 1; page 138) Robert Kay, P.S. 14096 witnessed 1/2" iron (no indication as to whether found or set) N30°W, 56.1'- 12" Box Elder; S45°E, 54.0'-TP; S40°W, 66.3' NE cor. pr
- 1973 (Survey-Liber 433, pages 10-15) David Rowe, P.S. 11192 -found 1/2" in 1972- N65°W, 61.37'- nail in TP; N75°W, 136.62'-nail in PP; S75°E, 70.06'-nail in PP

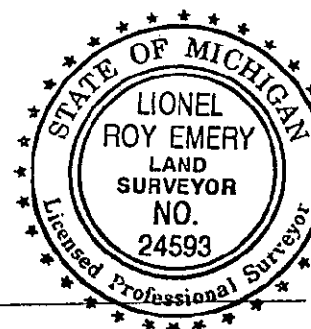
(See over)

B. Description of corner evidence found and/or method applied in restoring or reestablishing corner:

Found Boat Spike in Monument Box together with accessories
Accepted Boat Spike as marking original corner

C. Description of monument for corner and accessories established to perpetuate locating the position of the corner:

Set Standard Tuscola County 2" Brass Cap in Concrete in Monument Box over Boat Spike. Cap stamped K13 T10N R9E
S50°E, 70.40'-T.C. Re-mon. tag in SW face Pwr. Pole
S40°E, 54.06'-T.C. Re-mon. tag in SW face Tele. pole Stub
N60°W, 61.62'-T.C. Re-mon. tag in SW face Tele. pole Stub
N30°W, 56.79'-T.C. Re-mon. tag in SW face 28" Ash

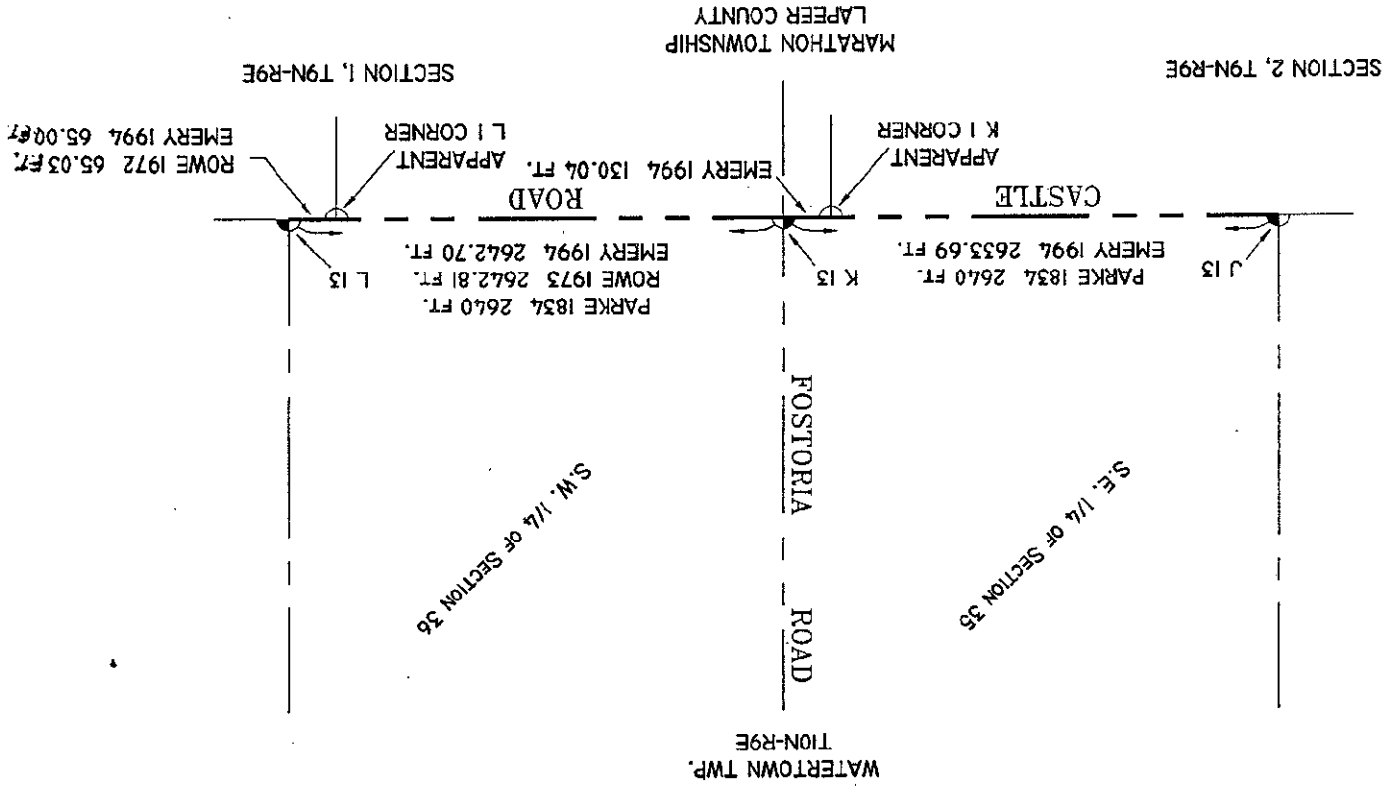


Signed by Lionel Roy Emery
Surveyor's Michigan License No. 24593

Date October 4, 1994

APPROVED
7-11-94

1987



1987 (Survey-Liber 578, pages 07-09) John Matonich, Jr., P.S. 31598-found boat spike in Monumen
 Box-N65°W, 61.37'-nail in TP; N75°W, 136.62'-nail in PP; S75°E, 70.06'-nail in PP; S46°W,
 72.00' NE cor. of house foundation
 1987 (Land Corner Recordation Certificate) John Matonich, Jr., P.S. 31598-found Boat Spike in
 Monument Box-accessories same as above 1987 Survey