

1999/2000 REMONUMENTATION PROGRAM

LAND CORNER RECORDATION CERTIFICATE
Filing Requirement of Act 74, Mich. P.A. 1970

For corners in Watertown Township

Tuscola (County)	Located In:	Corner Code #
1. Public Land Survey	T10N R 9E	L-7
	T R	
	T R	
	T R	
	T R	
2. Property Controlling in Section	S T R	
	S T R	
3. Miscellaneous Property in Sec.	S T R	
	S T R	

4. Lot No. _____, Recorded Plat _____
5. Private Claims _____

Lionel Roy Emery
I, P.S. #24593, in a field survey on Aug. 27, 1999 do hereby state that under requirements of P.A. 74, Michigan P.A. of 1970, the corner points mentioned in lines 1 and 2 above were in conformance with regulations and rules therefore as required in the current manual of survey instructions of the United States Department of the Interior, Bureau of Land Management or by a decree of a Court of Law and/or that the corner points mentioned in lines 3, 4 and 5 above were in conformance with the rules of the Michigan Board of Land Surveyors or by a Decree of a Court of Law; established, re-established, monumented, recovered, found as expressed below:

NOTE: Not more than 2 corners, all in the same town and range, may be recorded on this certificate.

	A	B	C	D	E	F	G	H	I	J	K	L	M
1													
2	6		5		4		3		2		1		
3													
4	7		8		9		10		11		12		
5													
6	18		17		16		15		14		13		
7													
8	19		20		21		22		23		24		
9													
10	30		29		28		27		26		25		
11													
12	31		32		33		34		35		36		
13													

A. Description of original monument and accessories and/or subsequent restoration:

Aug. 1, 1834 G.L.O. notes by H. Burnham, D.S. Set 1/4 section post at 40.24 chains, Sugar 6" N62°W 24 links, Beech 10" S62°E 26 links. July 2, 1971 Survey L-1, P-129 by Robert G. Kay, P.S. #14096, no mention of object found or accessories. July 5, 1972 Surveys L-2, P-25 & 26 by Bernard Henderson P.S. #16043, set P.K. nail, S70°W 156.35' P. pole, S30°W 78.38' 6" tree, S20°W 109.0' NE cor. house. July 5, 1972 L.C.R.C. #8 by Bernard Henderson, P.S. #16043, same object and accessories as Surveys L-2, P-25 & 26. June 13, 1988 Survey L-585, P-1479 by Earl E. Gravlin, P.S. #23510, found iron, N05°E 34.18' nail in P. Pole, S10°W 32.34' nail in T.P., S45°W 41.95' W. end conc. culvert. April 3, 1992 Survey L-629, P-1097 by Harold N. Elrich, P.S. #18986, found P.K. nail, accessories same as L.C.R.C. #8 by Henderson.

B. Description of corner evidence found and/or method applied in restoring or reestablishing corner:

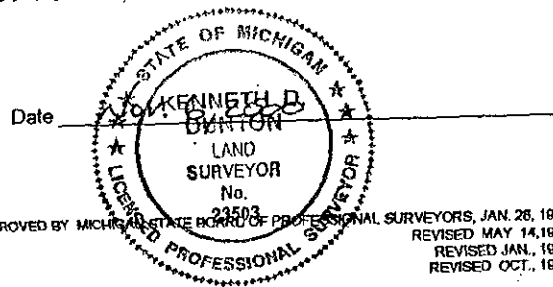
Found 1/2" iron rod in monument box and accepted same as the best evidence of the original corner position.

C. Description of monument for corner and accessories established to perpetuate locating the position of the corner:

Set 5/8" iron rod and standard brass cap stamped L-7, T10N-R9E over 1/2" iron rod. Encased rod and cap in concrete in monument box.
N05°E 34.11' set remon. tag & spike over fnd. nail in W. face Power Pole.
S05°W 32.26' set remon. tag & spike over fnd. nail in E. face tele. pole stub.
N50°W 44.65' set "V" notch atop W. end 12" drive culvert.
N20°W 27.32' set "V" notch atop E. end 12" drive culvert.

Due to the untimely illness of Mr. Emery, I, Kenneth D. Dunton, P.S. #23503 have reviewed Mr. Emery's field notes and have prepared this form.

Signed by *Kenneth D. Dunton*
Surveyor's Michigan License No. 23503



APPROVED
11/6/2000 *J.M.T.*
R.L.B.

FORM APPROVED BY MICHIGAN STATE BOARD OF PROFESSIONAL SURVEYORS, JAN. 28, 1971
REVISED MAY 14, 1975
REVISED JAN., 1983
REVISED OCT., 1995

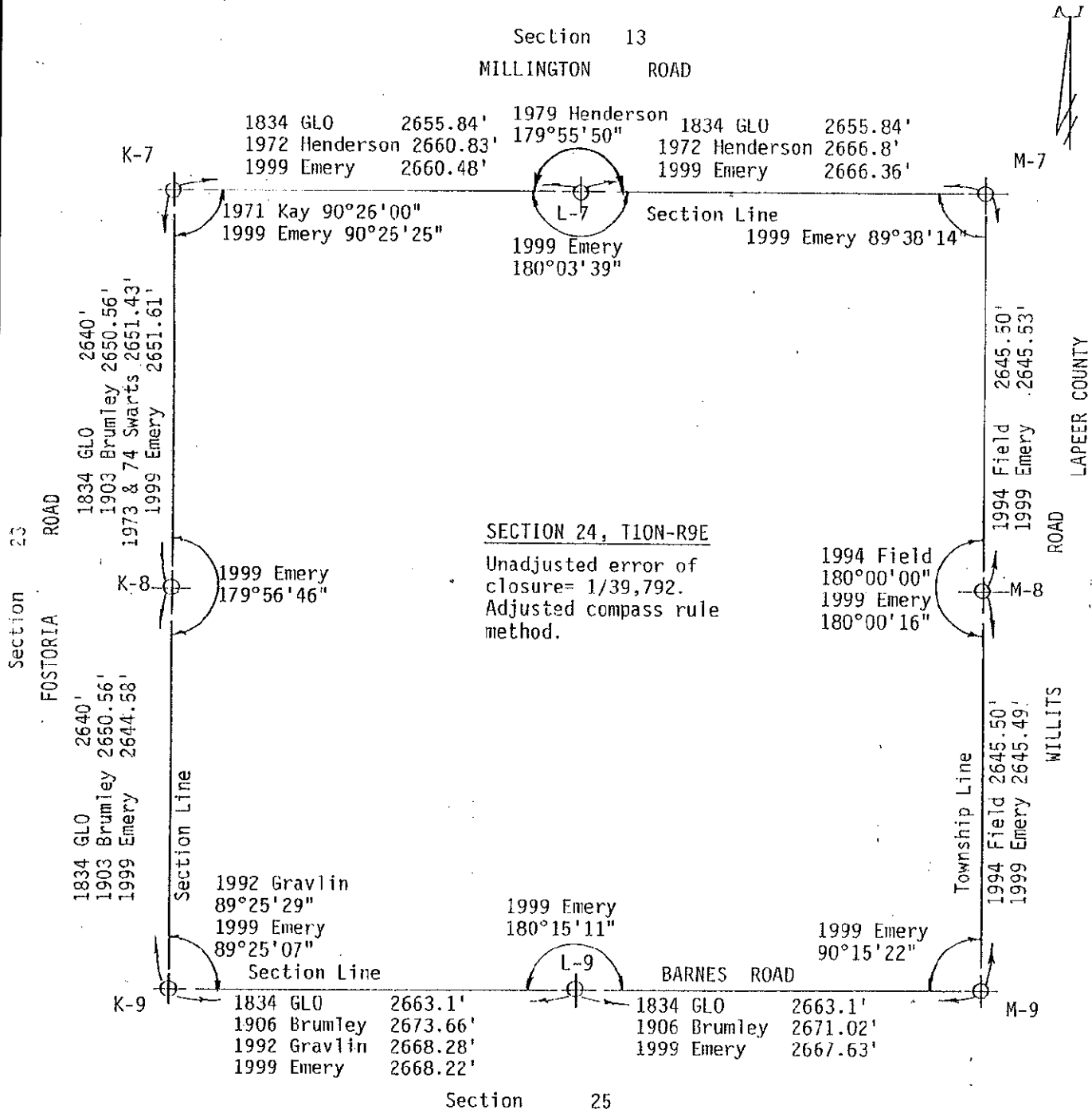
SURVEY &
REMONUMENTATION

COPY

FEB 08 2001

SECTION

RECEIVED FOR RECORD
LIBER NO. _____ PAGE NO. _____
FILE NO. #85 *Watertown Township*
08 NOV -9 AM 9:43
TUSCOLA COUNTY
REGISTER OF DEEDS
Register of Deeds Stamp & File Number



SURVEY & REMONUMENTATION

FEB 08 2001

SECTION