

REMONUMENTATION

OCT 20 1994

LAND CORNER RECORDATION CERTIFICATE

Filing Requirement of Act 74, Mich. P.A. 1970
1994 REMONUMENTATION PROGRAM

COMMISSION

For corners in Watertown Twp.

TUSCOLA
(County)

Located In:

Corner Code #

1. Public Land Survey	T	10N	R	09E	M-2
	T		R		
	T		R		
	T		R		
2. Property Controlling in Section	S	T	R		
	S	T	R		
3. Miscellaneous Property in Sec.	S	T	R		
	S	T	R		

COPY

RECEIVED FOR RECORD
LIBER NO. _____ PAGE NO. _____
FILING NO. # 58
WATERTOWN Twp.
94 OCT 10 AM 8:47
VIRGINIA H. HELLARICH
TUSCOLA COUNTY
REGISTER OF DEEDS

Register of Deeds Stamp & File Number

4. Lot No. _____, Recorded Plat _____
5. Private Claims _____

	A	B	C	D	E	F	G	H	I	J	K	L	M
2	6	5	4	3	2	1							
3													
4	7	8	9	10	11	12							
5													
6	18	17	16	15	14	13							
7													
8	19	20	21	22	23	24							
9													
10	30	29	28	27	26	25							
11													
12	31	32	33	34	35	36							
13													

I, JONATHAN M. FIELD, in a field survey on JULY 17 19 94, do hereby certify that under requirements of P.A. 74, Michigan P.A. of 1970, the corner points mentioned in lines 1 and 2 above were in conformance with regulations and rules therefore as required in the current manual of survey instructions of the United States Department of the Interior, Bureau of Land Management or by a decree of a Court of Law and/or that the corner points mentioned in lines 3, 4 and 5 above were in conformance with the rules of the Michigan Board of Land Surveyors or by a Decree of a Court of Law; established, re-established, monumented, re-monumented, recovered, found as expressed below:

NOTE: Not more than 4 corners, all in the same town and range, may be recorded on this certificate.

- A. Description of original monument and accessories and/or subsequent restoration:
 1834 GLO; PARKE, D.S.; SET POST; BEECH 15 S15W 20LKS., BEECH 5 N45E 8LKS.
 1965 TUSCOLA CO. RD. COMM.; BLACK; WIT CARD; FND GROUP OF STONES - SET 3/4" PIPE; S50°W 39.0' 18" MAPLE, N70°W 27.7' TWIN 4" CHERRY, EAST 23.0' 20" ELM
 1972 HENDERSON-BATES; ELRICH, P.S.#18986; SURVEY L.1, PG.346; FND 1" PIPE; N85°E 52.2' T. POLE S45°W 39.9' 20" MAPLE, N50°W 27.4' TWIN 8" APPLE
 1990 HENDERSON-BATES; ELRICH, P.S.#18986; SURVEY L.606, PG.433; 1" PIPE; S45°W 39.9' 24" MAPLE, S60°W 85.6' P. POLE, N35°W 71.0' 12" ASH

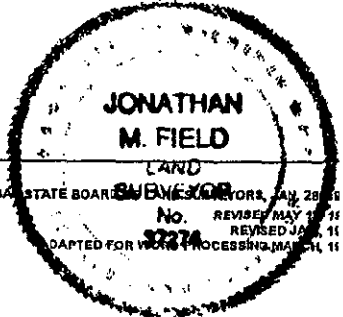
- B. Description of corner evidence found and/or method applied in restoring or reestablishing corner:
 1994 ROWE ENG. - FIELD, P.S.#37276; FND 3/4" PIPE 1' E. OF C/L GRAVEL ROAD N-S
 2 PREVIOUS WITNESSES INDICATE THAT PIPE IS IN SAME POSITION AS 1965 BLACK IRON
 ACCEPTED PIPE AS BEST EVIDENCE OF ORIGINAL CORNER POSITION

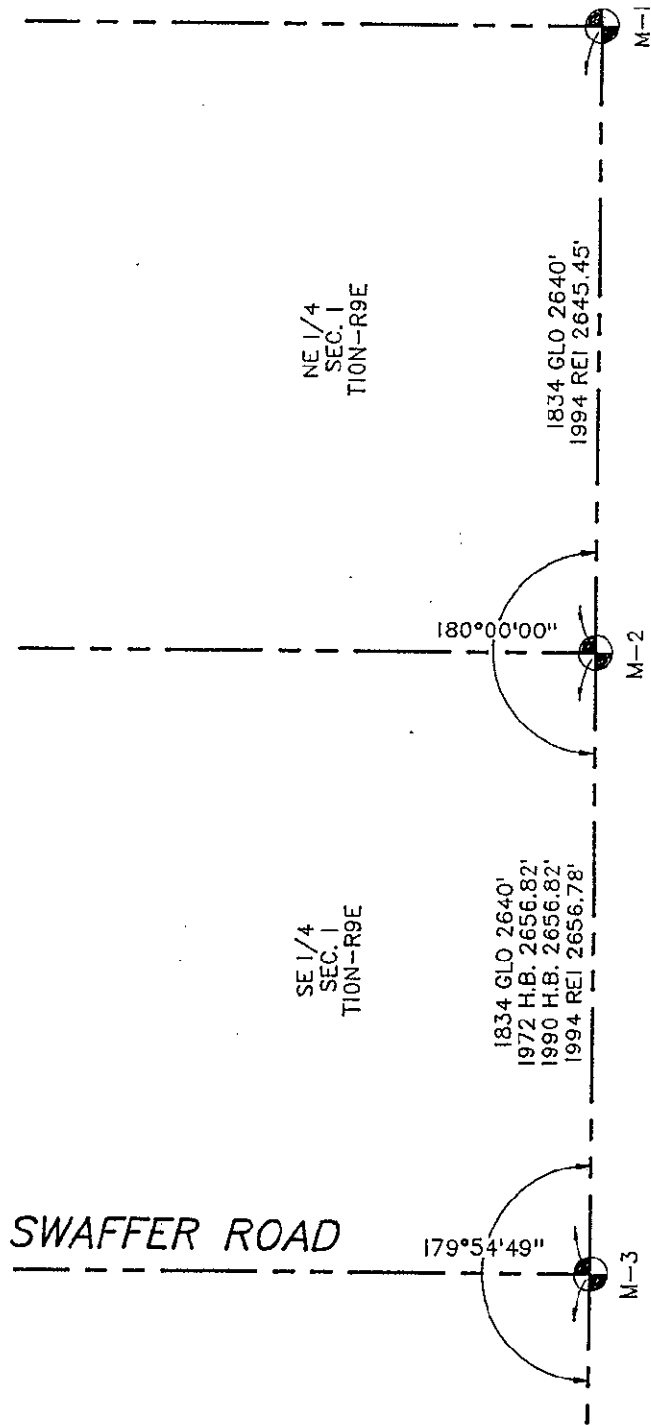
SEE ALSO BACK OF THIS FORM

- C. Description of monument for corner and accessories established to perpetuate locating the position of the corner:
 M-2 REMOVED PIPE, SET STANDARD MONUMENT (5/8"X36" ROD W/ BRASS CAP IN CONC.)
 N25°W, 70.62' SET NAIL W/REMON TAG IN W. FACE 10" ASH
 N57°W, 36.98' TOP CENTER OF PHONE RISER
 N59°W, 28.3' CENTER OF 20" STUMP
 N65°W, 27.57' SET NAIL W/REMON TAG IN NE FACE 10" ASH
 S64°W, 85.55' SET NAIL W/REMON TAG ABOVE FND NAIL W/FLAG IN S. FACE P. POLE
 S47°W, 39.82' SET NAIL W/REMON TAG ABOVE FND NAIL IN SE FACE 24" MAPLE

Signed by Jonathan M Field Date 9-2-94
 Surveyor's Michigan License No. 37276

APPROVED
8-31-94
 JMD
 J.P.E.





SWAFFER ROAD

WILLITS ROAD

