

MAY 18 1977

COMMISSIONER

1996 REMONUMENTATION PROGRAM  
**LAND CORNER RECORDATION CERTIFICATE**  
Filing Requirement of Act 74, Mich. P.A. 1970

For corners in Tuscola Township

RECEIVED FOR RECORD  
LIBER NO. Tuscola PAGE NO. 78  
FILE NO. Tuscola  
96 OCT 31 AM 10:40  
*Harold W. Dorcey*  
TUSCOLA COUNTY  
REGISTERED SURVEYORS

	Tuscola (County)	Located In:	Corner Code
1. Public Land Survey		T <u>11N</u> R <u>7E</u>	<u>A-1</u> ✓
		T _____ R _____	_____
		T <u>12N</u> R <u>7E</u>	<u>A-13</u>
		T _____ R _____	_____
2. Property Controlling in Section	S _____	T _____ R _____	_____
	S _____	T _____ R _____	_____
3. Miscellaneous Property in Sec.	S _____	T _____ R _____	_____
	S _____	T _____ R _____	_____
4. Lot No. _____, Recorded Plat _____			
5. Private Claims _____			

Register of Deeds Stamp & File Number

	A	B	C	D	E	F	G	H	I	J	K	L	M
2		6	5	4	3	2							
3													
4		7	8	9	10	11	12						
5													
6		16	17	18	15	14	13						
7													
8		19	20	21	22	23	24						
9													
10		30	29	28	27	26	25						
11													
12		31	32	33	34	35	36						
13													

I, Kenneth D. Dunton in a field survey on September 2, 19 95  
do hereby certify that under requirements of P.A. 74, Michigan P.A. of 1970, the corner points mentioned in lines 1 and 2 above were in conformance with regulations and rules therefore as required in the current manual of survey instructions of the United States Department of the Interior, Bureau of Land Management or by a decree of a Court of Law and/or that the corner points mentioned in lines 3, 4 and 5 above were in conformance with the rules of the Michigan Board of Land Surveyors or by a Decree of a Court of Law; established, re-established, monumented, re-monumented, recovered, found as expressed below:

**NOTE: Not more than 4 corners, all in the same town and range, may be recorded on this certificate.**

A. Description of original monument and accessories and/or subsequent restoration:

Feb. 19, 1834 G.L.O. Notes  
Orange Risdon, D.S.  
To township corner.  
One bearing tree dead and took another.  
Beech 16" N61W 59 Links  
Corner A-13, T12N-R7E

April of 1972 by Harold W. Dorcey, R.L.S. #9429 Act 74.  
Form filed on Page 4 Denmark Township. Found monument box in pavement, no witnesses.  
May of 1972 Survey by Harold W. Dorcey, R.L.S. #9429 recorded in Liber 2 Page 306 Tuscola County Records. Found monument box in pavement. No witnesses given.

B. Description of corner evidence found and/or method applied in restoring or reestablishing corner:

Found 7/8" iron bar in monument box and accepted as the proper position of Corner A-1.

C. Description of monument for corner and accessories established to perpetuate locating the position of the corner:

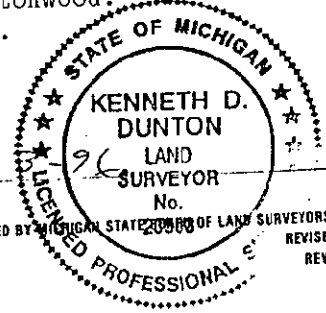
Placed standard brass cap stamped Corner A-13, T12N-R7E over found iron bar. Encased cap & iron bar in concrete in monument box. Set 11-4-95.  
S54°23'E 26.52' chiseled notch atop S. end 40' CSP arch under road.  
N41°40'E 32.61' fnd. chiseled notch atop N. end 40' CSP arch under road.  
S43°32'W 39.62' set T. C. Remon. tag & spike in SE face t. pole.  
N76°12'W 84.80' fnd. nail in S. face p. pole. Set T. C. Remon. tag & spike above.  
N57°40'E 59.64' set T. C. Remon. tag & spike in South root 40" cottonwood.  
N62°35'E 39.05' set T. C. Remon. tag & spike in South face t. pole.  
West 8' physical centerline N-S pavement.  
North 6' physical centerline E-W pavement.

Note: This corner is common with A-13, T12N-R7E. ✓

Signed by *Kenneth D. Dunton*  
Surveyor's Michigan License No. 23503

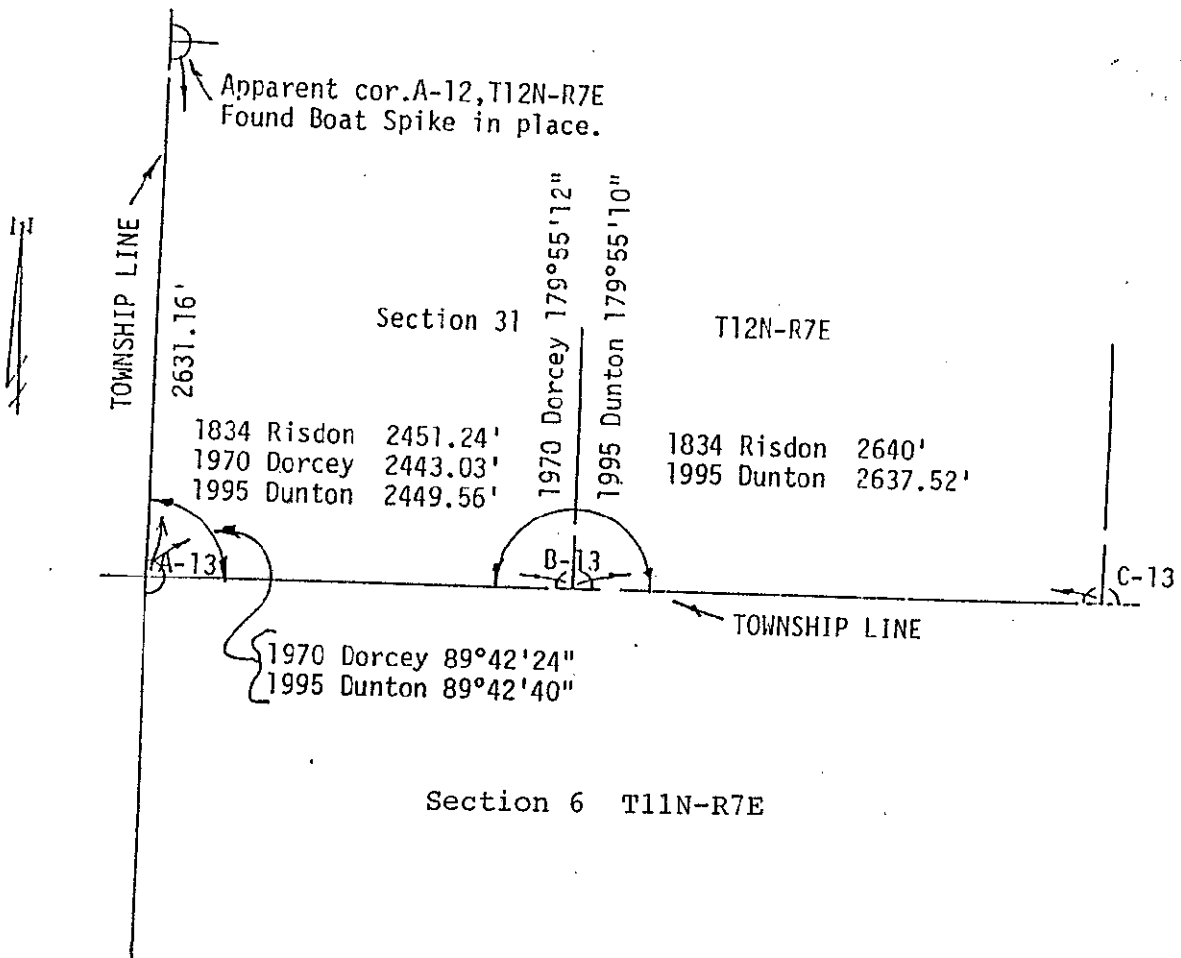
Date 10-2-96

APPROVED *RWB*  
10-23-96 *J.P.E.*



FORM APPROVED BY MICHIGAN STATE BOARD OF LAND SURVEYORS, JAN. 28, 1971  
REVISED MAY 14, 1975  
REVISED JAN., 1983

COPY



COPY