

**SURVEY &
REMONUMENTATION**

APR 25 1995

COMMISSION

LAND CORNER RECORDATION CERTIFICATE

Filing Requirement of Act 74, Mich. P.A. 1970
1994 REMONUMENTATION PROGRAM

For corners in TUSCOLA TWP.
TUSCOLA
(County)

Located In:

Corner Code #

1. Public Land Survey	T 11N R 07E	E-13
	T _____ R _____	_____
	T _____ R _____	_____
	T _____ R _____	_____
2. Property Controlling In Section	S _____ T _____ R _____	_____
	S _____ T _____ R _____	_____
3. Miscellaneous Property in Sec.	S _____ T _____ R _____	_____
	S _____ T _____ R _____	_____

4. Lot No. _____, Recorded Plat _____
5. Private Claims _____

I, JONATHAN M. FIELD, in a field survey on AUGUST 5 19 94, do hereby certify that under requirements of P.A. 74, Michigan P.A. of 1970, the corner points mentioned in lines 1 and 2 above were in conformance with regulations and rules therefore as required in the current manual of survey instructions of the United States Department of the Interior, Bureau of Land Management or by a decree of a Court of Law and/or that the corner points mentioned in lines 3, 4 and 5 above were in conformance with the rules of the Michigan Board of Land Surveyors or by a Decree of a Court of Law; established, re-established, monumented, re-monumented, recovered, found as expressed below:

NOTE: Not more than 4 corners, all in the same town and range, may be recorded on this certificate.

A. Description of original monument and accessories and/or subsequent restoration:
1821 GLO; WAMPLER, D.S.; SET POST; BIRCH 9 N41E 16LKS., BEECH 8 S56W 9LKS.

B. Description of corner evidence found and/or method applied in restoring or reestablishing corner:
1994 ROWE ENG.; FIELD, P.S.#37276; FND. RR SPIKE 2' S. OF C/L ASPH ROAD E-W & ON C/L ASPH ROAD TO NNE.

ACCEPTED FND. RR SPIKE AS BEST EVIDENCE OF ORIGINAL CORNER POSITION

SEE ALSO BACK OF THIS FORM

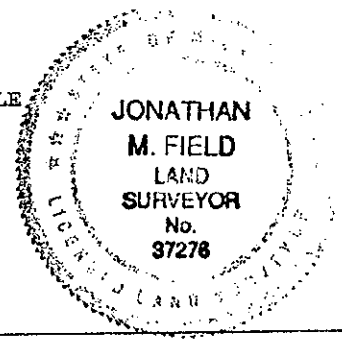
C. Description of monument for corner and accessories established to perpetuate locating the position of the corner:
E-13 REMOVED RR SPIKE, SET STANDARD MONUMENT (5/8"X 36" ROD W/ BRASS CAP IN CONC.)
WEST, 38.51' FND. RR SPIKE IN MON. BOX
N85°W, 38.67' FND. 1/2" ROD
N57°W, 58.64' SET NAIL W/REMON TAG IN SW FACE 6" ELM
S64°E, 38.55' SET CHIS. NOTCH IN TOP S. END 24" CSP
S49°E, 63.80' FND. P-K NAIL & NAIL W/TAG #32332 IN NW FACE P. POLE
S62°W, 64.35' SET NAIL W/REMON TAG IN NW FACE FE POST

COPY

RECEIVED FOR RECORD
LIBERNO. _____ PAGE NO. _____
FILING NO. # 58
94 NOV 15 AM 10:25
TUSCOLA TWP
VIRGINIA H. HILGREN
TUSCOLA COUNTY
REGISTER OF DEEDS

Register of Deeds Stamp & File Number

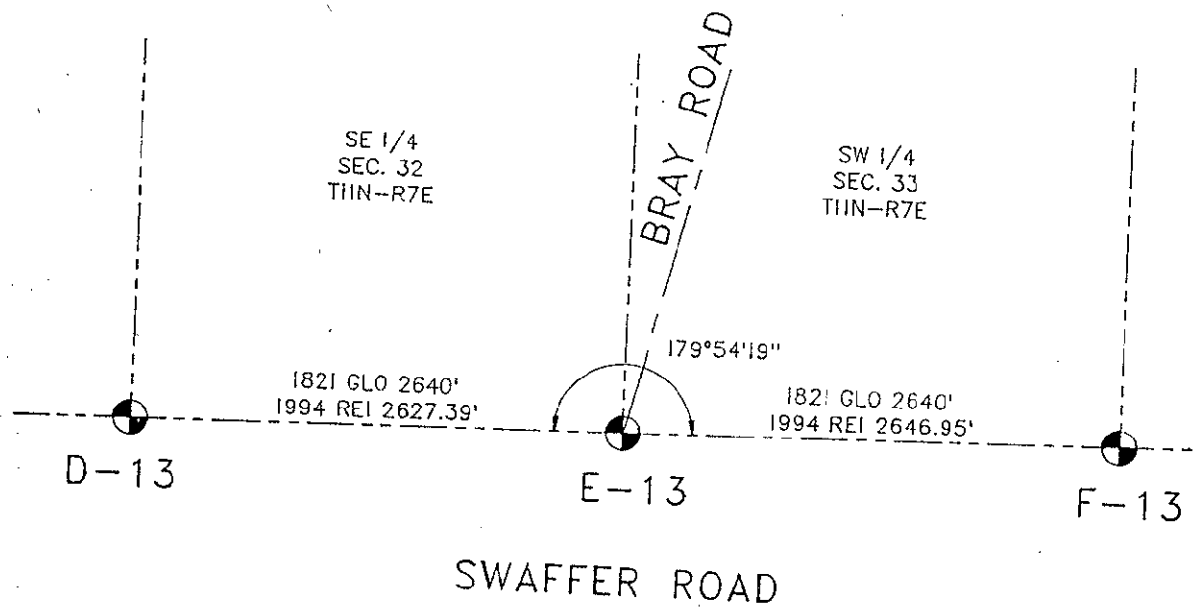
	A	B	C	D	E	F	G	H	I	J	K	L
1												
2	6	5	4	3	2	1						
3												
4	7	8	9	10	11	12						
5												
6	18	17	16	15	14	13						
7												
8	19	20	21	22	23	24						
9												
10	30	29	28	27	26	25						
11												
12	31	32	33	34	35	36						
13												



Signed by Jonathan M. Field
Surveyor's Michigan License No. 37276

Date 11-4-94

APPROVED
10-24-94
J.M.F.
mg



ES