

**1999 REMONUMENTATION PROGRAM
LAND CORNER RECORDATION CERTIFICATE
Filing Requirement of Act 74, Mich. P.A. 1970**

RECEIVED FOR RECORD
LIBER NO. _____ PAGE NO. _____
FILE NO. #88
TUSCOLA TWP.
99 DEC -7 AM 9:17

Gregory M. ...
TUSCOLA COUNTY
REGISTER OF DEEDS

For corners in: **TUSCOLA TWP.**

<u>TUSCOLA</u> (County)	Located In:	Corner Code #
1. Public Land Survey	T <u>11N</u> R <u>07E</u>	<u>K-7</u>
	T _____ R _____	_____
	T _____ R _____	_____
	T _____ R _____	_____
2. Property Controlling in Section	S _____ T _____ R _____	_____
	S _____ T _____ R _____	_____
3. Miscellaneous Property in Sec.	S _____ T _____ R _____	_____
	S _____ T _____ R _____	_____

Register of Deeds Stamp & File Number

4. Lot No. _____, Recorded Plat _____
5. Private Claims _____

	A	B	C	D	E	F	G	H	I	J	K	L	M
1													
2	6	5	4	3	2	1							
3													
4	7	8	9	10	11	12							
5													
6	18	17	16	15	14	13							
7													
8	19	20	21	22	23	24							
9													
10	30	29	28	27	26	25							
11													
12	31	32	33	34	35	36							
13													

I, Mark W. Powell, P.S., in a field survey on October 19 1999, do hereby certify that under requirements of P.A. 74, Michigan P.A. of 1970, the corner points mentioned in lines 1 and 2 above were in conformance with regulations and rules therefore as required in the current manual of survey instructions of the United States Department of the Interior, Bureau of Land Management or by a decree of a Court of Law and/or that the corner points mentioned in lines 3, 4 and 5 above were in conformance with the rules of the Michigan Board of Land Surveyors or by a Decree of a Court of Law: established, re-established, monumented, re-monumented, recovered, found as expressed below:

NOTE: Not more than 4 corners, all in the same town and range, may be recorded on this certificate.

A. Description of original monument and accessories and/or subsequent restoration:

- 1822 GLO; FLETCHER, D.S.; SET POST; BEECH 12 S31E 9LKS., SUGAR 10 S80E 18LKS.
- 1974 SPICER ENG.; MARTIN, P.S. #4699; SURVEY L.453, PG. 991; 3/4" IRON PIPE; W. 11.76' TO S.W. CORNER ROCK, S.E. 16.20' TO 12" POPLAR, S.W. 19.23' TO 8" POPLAR
- 1975 MARTIN, P.S. #4699; LCRC PG.15; 3/4" IRON PIPE; W. 11.76' TO S.W. CORNER ROCK, S.E. 16.20' TO 12" POPLAR, S.W. 19.23' TO 8" POPLAR
- 1975 MARTIN, P.S. #4699; LCRC PG 18; 3/4" IRON PIPE; W. 11.76' TO S.W. CORNER ROCK, S.E. 16.20' TO 12" POPLAR, S.W. 19.23' TO 8" POPLAR
- 1975 SPICER ENG.; MARTIN, P.S. #4699; SURVEY L.453, PG. 994; 3/4" IRON PIPE; W. 11.76' TO S.W. CORNER ROCK, S.E. 16.20' TO 12" POPLAR, S.W. 19.23' TO 8" POPLAR
- 1976 ROWE ENG.; ROWE, P.S. #11192; SURVEY L.469, PG. 973-975; SHOWS CORNER ON SURVEY, NO DESCRIPTION OF MONUMENT LISTED, NO ACCESSORIES LISTED

A. CONTINUED ON BACK:

B. Description of corner evidence found and/or method applied in restoring or reestablishing corner:

1999 FOUND 3/4" IRON PIPE

I ACCEPT THE 3/4" IRON PIPE AS THE OBJECT OF RECORD AND AS A CAREFUL AND FAITHFUL PERPETUATION OF THE POSITION OF THE ORIGINAL CORNER.

C. Description of monument for corner and accessories established to perpetuate locating the position of the corner:

I REMOVED THE 3/4" PIPE AND SET THE STANDARD MONUMENT (5/8" X 36" ROD WITH BRASS CAP IN CONCRETE) STAMPED K-7, T11N-R7E, P.S. #44298 AND SET CARSONITE POST ALONGSIDE MONUMENT

- N45W 2.87' FOUND NAIL W. FACE 6" IRONWOOD
- WEST 11.77' SW CORNER LARGE ROCK
- S50E 10.87' FOUND NAIL & TAG #11192 SW FACE 12" POPLAR
- SOUTH 10.17' FOUND NAIL & TAG #11192 E. FACE 10" POPLAR

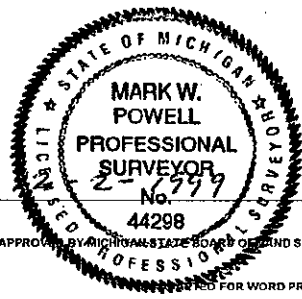
Signed by Mark W. Powell

Date _____

Surveyor's Michigan License No. 44298

APPROVED
12-2-1999

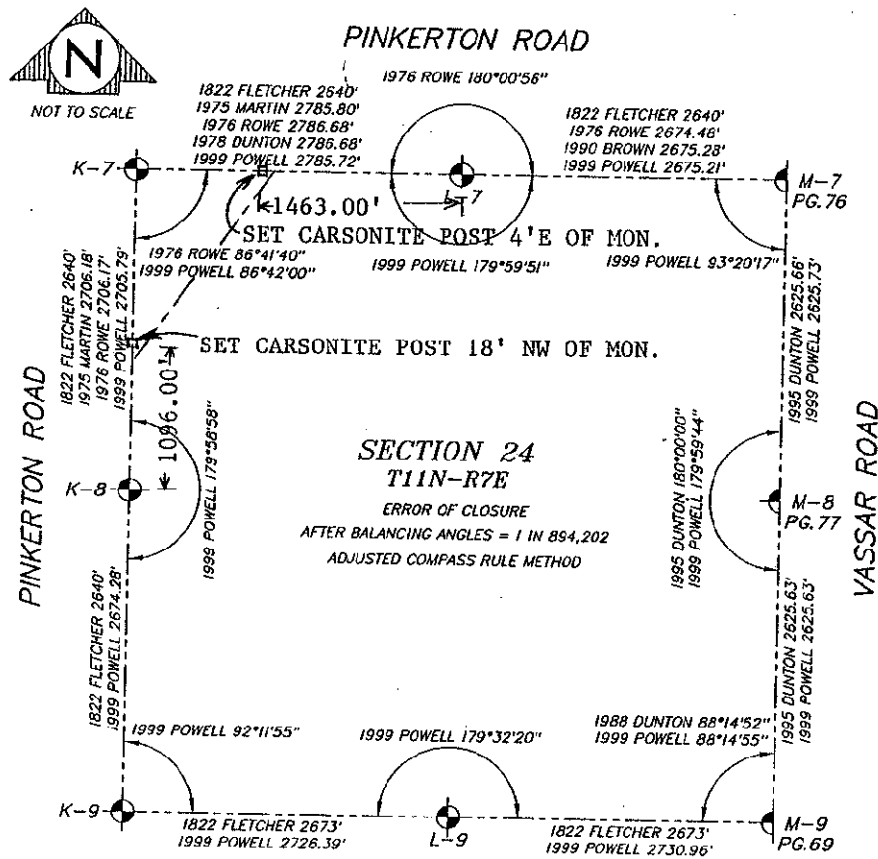
Handwritten initials



FORM APPROVED BY MICHIGAN STATE BOARD OF LAND SURVEYORS, JAN. 28, 1971
REVISED MAY 14, 1975
REVISED JAN., 1983
REDESIGNED FOR WORD PROCESSING MARCH, 1993

A. CONTINUED:

- 1976 ROWE ENG.; ROWE, P.S. #11192; SURVEY L.469, PG. 146; SHOWS CORNER ON SURVEY, NO DESCRIPTION OF MONUMENT LISTED, NO ACCESSORIES LISTED
- 1978 ROWE ENG.; DUNTON, P.S. #23503; SURVEY L.488, PG. 874; 3/4" IRON PIPE; W. 11.76' TO S.W. CORNER ROCK, S.E. 16.20' TO 12" POPLAR, S.W. 19.23' TO 8" POPLAR
- 1978 ROWE ENG.; DUNTON, P.S. #23503; SURVEY L.480, PG 687-688; 3/4" IRON PIPE; W. 11.76' TO S.W. CORNER ROCK, S.E. 16.20' TO 12" POPLAR, S.W. 19.23' TO 8" POPLAR
- 1979 DUNTON P.S. #23503; SURVEY L.495 PG. 510; FND. 3/4" PIPE; W. 11.8' TO S.W. CORNER ROCK, S.E. 16.2' FACE 12" POPLAR, S.W. 19.2' FACE 8" POPLAR
- 1989 SZYSZKOSKI, P.S. #33986; LCRC PG. 53; FOUND 1/2" PIPE; W. 11.76' TO S.W. CORNER ROCK, N45W 2.90' SET 40D NAIL & FLAG W. FACE 6" POPLAR, S50E 10.85' FND. NAIL & TAG #11192 S.W. FACE 12" POPLAR, S. 10.17' FND. NAIL & TAG #11192 E. FACE 10" POPLAR
- 1989 ROWE ENG.; SZYSZKOSKI, P.S. #33986; SURVEY L. 592 PG. 202; FND. 1/2" PIPE; W. 11.76' TO S.W. CORNER ROCK, N45W 2.90' SET 40D NAIL W. FACE 6" POPLAR, S50E 10.85' FND. TAG #11192 S.W. FACE 12" POPLAR, S. 10.17' FND. TAG #11192 E. FACE 10" POPLAR
- 1993 ROWE ENG.; FIELD, P.S. #37276; SURVEY L. 654 PG. 1117-1119; FND. 1/2" PIPE; W. 11.76' TO S.W. CORNER ROCK, S50E 10.85' FND. NAIL W/TAG #11192 S.W. FACE 12" POPLAR, S. 10.17' FND. NAIL W/TAG #11192 E. FACE 10" POPLAR, N45W 2.90' FND 40DNAIL W/FLAG SW FACE 6" POPLAR
- 1993 ROWE ENG.; FIELD, P.S. #37276; SURVEY L. 640 PG. 983-987; FND. 1/2" PIPE; W. 11.76' TO S.W. CORNER ROCK, S50E 10.85' FND. NAIL W/TAG #11192 S.W. FACE 12" POPLAR, S. 10.17' FND. NAIL W/TAG #11192 E. FACE 10" POPLAR, N45W 2.90' FND 40DNAIL W/FLAG SW FACE 6" POPLAR



□ = SET REFERENCE MONUMENT (5/8"x36" ROD WITH BRASS CAP IN CONCRETE) ON SECTION LINE