

**1999 REMONUMENTATION PROGRAM
LAND CORNER RECORDATION CERTIFICATE**
Filing Requirement of Act 74, Mich. P.A. 1970

RECEIVED FOR RECORD
LIBER NO. _____ PAGE NO. _____
FILE NO. #87
TUSCOLA TWP.
99 DEC -7 AM 9:17

For corners in: TUSCOLA TWP.

<u>TUSCOLA</u> (County)	Located In:	Corner Code #
1. Public Land Survey	T <u>11N</u> R <u>07E</u>	<u>K-8</u>
	T _____ R _____	_____
	T _____ R _____	_____
	T _____ R _____	_____
2. Property Controlling in Section	S _____ T _____ R _____	_____
	S _____ T _____ R _____	_____
3. Miscellaneous Property in Sec.	S _____ T _____ R _____	_____
	S _____ T _____ R _____	_____

George M. ...
TUSCOLA COUNTY
REGISTER OF DEEDS
COPY
Register of Deeds Stamp & File Number

4. Lot No. _____, Recorded Plat _____
5. Private Claims _____

	A	B	C	D	E	F	G	H	I	J	K	L	M
2	6	5	4	3	2	1							
3													
4	7	8	9	10	11	12							
5													
6	18	17	16	15	14	13							
7													
8	19	20	21	22	23	24							
9													
10	30	29	28	27	26	25							
11													
12	31	32	33	34	35	36							
13													

I, Mark W. Powell, P.S., in a field survey on May 26 1999, do hereby certify that under requirements of P.A. 74, Michigan P.A. of 1970, the corner points mentioned in lines 1 and 2 above were in conformance with regulations and rules therefore as required in the current manual of survey instructions of the United States Department of the Interior, Bureau of Land Management or by a decree of a Court of Law and/or that the corner points mentioned in lines 3, 4 and 5 above were in conformance with the rules of the Michigan Board of Land Surveyors or by a Decree of a Court of Law; established, re-established, monumented, re-monumented, recovered, found as expressed below:

NOTE: Not more than 4 corners, all in the same town and range, may be recorded on this certificate.

A. Description of original monument and accessories and/or subsequent restoration:

- 1822 GLO; FLETCHER, D.S.; SET POST; HICKORY 12 S12W 12LKS, W. ASH 9 S83W 25LKS
- 1958 SPICER, PS. #1992; PLAT "PROCTOR HEIGHTS" L.2 PG. 31; PLAT TIED TO CORNER, NO DESCRIPTION OF MONUMENT LISTED, NO ACCESSORIES LISTED.
- 1972 ROWE ENG.; ROWE, P.S. #11192; SURVEY L. 2 PG. 435-436; 3/4" PIPE; N50W 226.93' P.P., N10E 140.6' P.P., S50W 198.63' P.P.
- 1975 MARTIN, P.S. #4699; LCRC PG. 18; 3/4" IRON PIPE; SW 40.62' TO CTR. ST. SIGN POST, N.W. 178.55' TO S.E. COR. BRICK FCE. HSE., ABOUT 2.0' E. OF C/L BIT. N.&S.
- 1975 MARTIN, P.S. #4699; LCRC PG. 15; 3/4" IRON PIPE; S.W. 40.62' TO CTR. ST. SIGN POST, N.W. 178.55' TO S.E. COR. BRICK FCE. HSE., ABOUT 2.0' E. OF C/L BIT. N.&S.

A. CONTINUED ON BACK:

B. Description of corner evidence found and/or method applied in restoring or reestablishing corner:

1999 FOUND 1/2" RE-ROD OVER 3/4" IRON PIPE OVER 1 1/2" IRON PIPE

I ACCEPT THE 1/2" RE-ROD OVER 3/4" IRON PIPE OVER 1 1/2" IRON PIPE AS THE OBJECT OF RECORD AND AS A CAREFUL AND FAITHFUL PERPETUATION OF THE POSITION OF THE ORIGINAL CORNER

C. Description of monument for corner and accessories established to perpetuate locating the position of the corner:

I REMOVED THE 1/2" RE-ROD OVER 3/4" IRON PIPE OVER 1 1/2" IRON PIPE AND SET THE STANDARD MONUMENT (5/8" X 36" ROD WITH BRASS CAP IN CONCRETE) STAMPED K-8, T11N-R7E, P.S. #44298 AND INSTALLED A MONUMENT BOX

- N45E 34.18' FOUND P.K. NAIL IN TOP CENTER 36" CMP
- S15E 30.35' SET 1/2" RE-ROD & CAP #37276
- S60W 46.82' FOUND 1" IRON PIPE
- N45W 37.95' WESTERN MOST RIVET 36" CMP

Signed by Mark W Powell

Date _____



Surveyor's Michigan License No. 44298

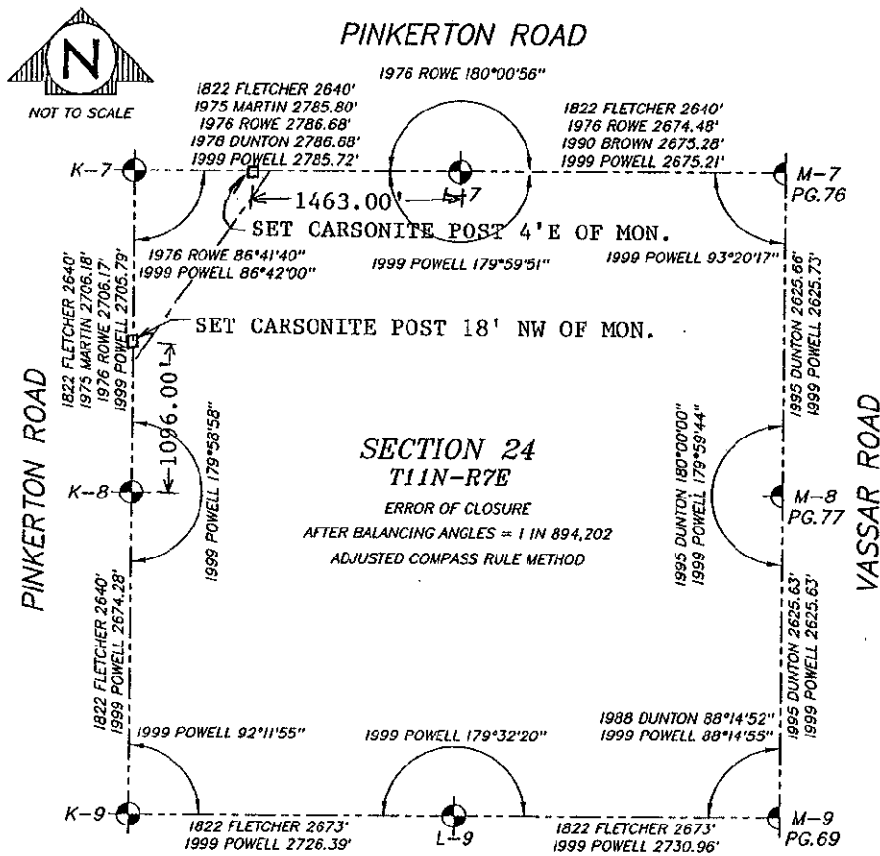
APPROVED
12-2-1999

FORM APPROVED BY MICHIGAN STATE BOARD OF LAND SURVEYORS, JAN. 28, 1971
REVISED MAY 14, 1975
REVISED JAN., 1983
ADAPTED FOR WORD PROCESSING MARCH, 1983

89

A. CONTINUED:

- 1976 ROWE ENG.; ROWE, P.S. #11192; SURVEY L. 469, PG. 973-975; FND. 3/4" PIPE; S50W 198.63' NAIL & CAP IN PP, N55W 226.93' NAIL & CAP IN PP, N10E 140.6' NAIL & CAP IN PP, S25W 233.05' RD. SIGN POST
- 1978 ROWE ENG.; DUNTON, P.S. #23503; SURVEY L.485 PG.417-418; FND. 1/2" PIPE RAISED W/ 1/2" RE-ROD NO.11192; S50W 198.63 NAIL & CAP IN P.P., N50W 70.25' RLS 11192 TAG 3" ELM, N40E 46.66' RLS 11192 TAG 6" ELM, EAST 67.00' RLS 11192 TAG 24" DEAD ELM
- 1978 ROWE ENG.; DUNTON, P.S. #23503; SURVEY L. 488 PG. 874; 1/2" ROD; N50W 70.25' RLS 11192 TAG IN 3" ELM, N40E 46.66' RLS 11192 TAG IN 6" ELM, S50W 198.63' NAIL & CAP IN P.P., EAST 67.00' RLS 11192 TAG IN 25" DEAD ELM
- 1979 DUNTON, P.S. #23503; SURVEY L. 495 PG. 510-511; FND. 1/2" ROD & CAP; N25E 34.4' E. END 30" CMP, N40W 37.6' W. END 30" CMP, N40E 46.7' TAG IN 6" ELM
- 1979 DUNTON, P.S. #23503; SURVEY L. 503 PG.1294; FND. 1/2" ROD; N50W 70.25' TAG IN 3" ELM, N40E 46.66' TAG IN 6" ELM, EAST 67.00' TAG IN 24" DEAD ELM
- 1988 DUNTON, P.S. #23503; SURVEY L. 587 PG. 091-092; FND. 1/2" ROD & CAP; N25E 34.4' E. END 30" CMP, N40W 37.6' W. END 30" CMP, N40E 46.7' TAG IN 6" ELM
- 1988 SPICER ENG.; PREVOST, P.S. #24612; UNRECORDED SURVEY, JOB NO. S-8393; REC'D. #18 - 3/4" IRON PIPE; S.W. 40.62' TO CENTER STREET SIGN POST, N.W. 178.55' TO S.E. COR. BRICK FACE HSE., 2.0' E. OF C/L BIT. N.&S.
- 1993 ROWE ENG.; FIELD, P.S. #37276; SURVEY L. 640, PG. 983-987; SHOWS CORNER ON SURVEY, NO DESCRIPTION OF MONUMENT LISTED, NO ACCESSORIES LISTED.
- 1995 DUNTON, P.S. #23503; SURVEY L. 669 PG. 1197-1198; FND. 1/2" ROD; N25E 34.4' E. END 30" CMP, N40W 37.6' W. END 30" CMP, N40E 46.7' TAG IN 6" ELM, S89-40'W 2641.80' FND. 3/4" PIPE AT CENTER SEC. 23
- 1996 HERITAGE SURVEYING; JURAS, P.S. #33980; 1/2" IRON ROD 3" BELOW BIT.; E 12.68' TO N. LEG SIGN, S50W 41.26' TO CTR. SIGN POST, N45W 37.89' TO W. RIVET IN W. END 36" CMP



□ = SET REFERENCE MONUMENT (5/8"x36" ROD WITH BRASS CAP IN CONCRETE) ON SECTION LINE