

**SURVEY &
REMONUMENTATION**

APR 25 1995

COMMISSION

LAND CORNER RECORDATION CERTIFICATE

Filing Requirement of Act 74, Mich. P.A. 1970

1994 REMONUMENTATION PROGRAM

For corners in TUSCOLA TWP.
TUSCOLA
(County)

Located In:

Corner Code #

1. Public Land Survey	T	11N	R	07E	K-13
	T		R		
	T		R		
	T		R		
2. Property Controlling in Section	S	T	R		
	S	T	R		
3. Miscellaneous Property in Sec.	S	T	R		
	S	T	R		

RECEIVED FOR RECORD
LIBER NO. _____ PAGE NO. _____
FILING NO. #64
TUSCOLA TWP
94 NOV 15 AM 10:26
VIRGINIA H. McLANE
TUSCOLA COUNTY
REGISTER OF DEEDS
Register of Deeds Stamp & File Number

4. Lot No. _____, Recorded Plat _____
5. Private Claims _____

1	A	B	C	D	E	F	G	H	I	J	K	L
2	6	5	4	3	2	1						
3												
4	7	8	9	10	11	12						
5												
6	18	17	16	15	14	13						
7												
8	19	20	21	22	23	24						
9												
10	30	29	28	27	26	25						
11												
12	31	32	33	34	35	36						
13												

I, JONATHAN M. FIELD, in a field survey on AUGUST 5 1994 do hereby certify that under requirements of P.A. 74, Michigan P.A. of 1970, the corner points mentioned in lines 1 and 2 above were in conformance with regulations and rules therefore as required in the current manual of survey instructions of the United States Department of the Interior, Bureau of Land Management or by a decree of a Court of Law and/or that the corner points mentioned in lines 3, 4 and 5 above were in conformance with the rules of the Michigan Board of Land Surveyors or by a Decree of a Court of Law; established, re-established, monumented, re-monumented, recovered, found as expressed below:

NOTE: Not more than 4 corners, all in the same town and range, may be recorded on this certificate.

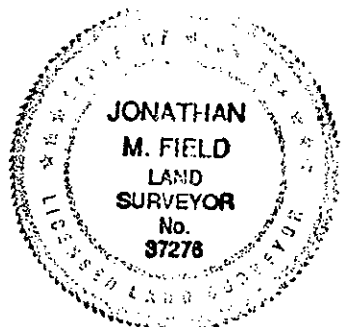
A. Description of original monument and accessories and/or subsequent restoration:
1821 GLO; WAMPLER, D.S.; SET POST; BEECH 18 N59E 54LKS., BEECH 11 S82W NO DIST.
1975 BECK, P.S. #21559; LCRC 21; FND. NAIL IN ASPH. - SET 1/2" ROD; N25°W, 25.18' 11192 TAG TP, S70°W 68.9' 24" PINE, EAST 76.6' DIP @ POSSIBLE CLOSING COR., NORTH 33.0' 1" PIPE
1976 LEACH, P.S.#7236; LCRC 24; FND. 1/2" ROD; N40°W 25.22' NAIL W/CAP #11192 T.P., S30°W 84.70' 12" PINE, EAST 76.64' K-1
1980 DUNTON SURVEYING; DUNTON, P.S.#23503; SURVEY L.505, PG.436; FND. 1/2" ROD; N45°W 25.17' TAG IN TP, S65°W 69.3' CENTER 24" PINE

B. Description of corner evidence found and/or method applied in restoring or reestablishing corner:
ROWE ENG.; FIELD, P.S.#37276; FND. 1/2" ROD AT C/L OF ASPH ROAD E./ GRAVEL ROAD W. & ON TREE ROW TO N.

ACCEPTED FND. 1/2" ROD AS BEST EVIDENCE OF ORIGINAL CORNER POSITION

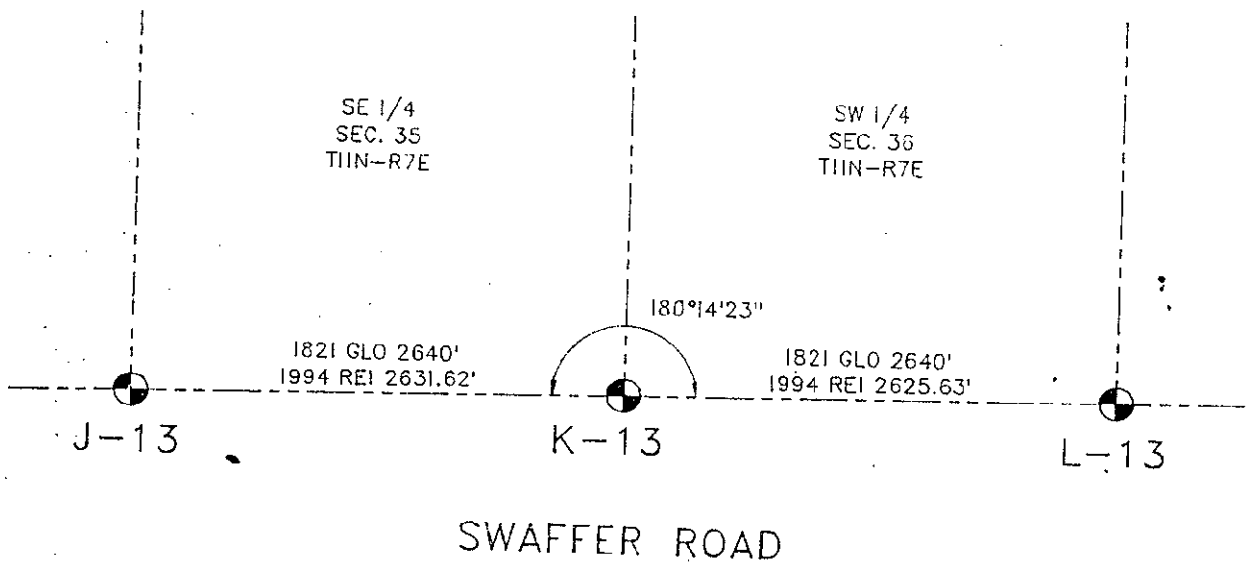
SEE ALSO BACK OF THIS FORM

C. Description of monument for corner and accessories established to perpetuate locating the position of the corner:
K-13 REMOVED ROD, SET STANDARD MONUMENT (5/8"X 36" ROD W/ BRASS CAP IN CONC.) IN MON. BOX
EAST, 76.77' FND. 3/4" PIPE
N36°W, 25.30' FND. NAIL W/TAG #11192 IN NE FACE CUT-OFF T. POLE
N64°E, 31.70' SET 1/2" ROD
S64°E, 29.30' SET 1/2" ROD
S58°W, 68.25' SET NAIL W/REMON TAG IN N. FACE 24" PINE



Signed by Jonathan M. Field Date 11-4-94
Surveyor's Michigan License No. 37276

APPROVED
10-24-94
1500
J. Field
Jmg



E.O.B.A.