

**1999 REMONUMENTATION PROGRAM
LAND CORNER RECORDATION CERTIFICATE
Filing Requirement of Act 74, Mich. P.A. 1970**

RECEIVED FOR RECORD
LIBER NO. _____ PAGE NO. _____
FILE NO. #89
TUSCOLA TWP.
99 DEC -7 AM 9:17

Springfield
TUSCOLA COUNTY
REGISTER OF DEEDS

COPY

For corners in: TUSCOLA TWP.

<u>TUSCOLA</u> (County)	Located In:	Corner Code #
	<u>T 11N R 07E</u>	<u>L-7</u>
1. Public Land Survey	T _____ R _____	_____
	T _____ R _____	_____
	T _____ R _____	_____
2. Property Controlling in Section	S _____ T _____ R _____	_____
	S _____ T _____ R _____	_____
3. Miscellaneous Property in Sec.	S _____ T _____ R _____	_____
	S _____ T _____ R _____	_____
4. Lot No. _____	Recorded Plat _____	
5. Private Claims _____		

Register of Deeds Stamp & File Number

	A	B	C	D	E	F	G	H	I	J	K	L	M
1													
2	6	5	4	3	2	1							
3													
4	7	8	9	10	11	12							
5													
6	18	17	16	15	14	13							
7													
8	19	20	21	22	23	24							
9													
10	30	29	28	27	26	25							
11													
12	31	32	33	34	35	36							
13													

I, Mark W. Powell, P.S., in a field survey on October 19 1999, do hereby certify that under requirements of P.A. 74, Michigan P.A. of 1970, the corner points mentioned in lines 1 and 2 above were in conformance with regulations and rules therefore as required in the current manual of survey instructions of the United States Department of the Interior, Bureau of Land Management or by a decree of a Court of Law and/or that the corner points mentioned in lines 3, 4 and 5 above were in conformance with the rules of the Michigan Board of Land Surveyors or by a Decree of a Court of Law, established, re-established, monumented, re-monumented, recovered, found as expressed below:

NOTE: Not more than 4 corners, all in the same town and range, may be recorded on this certificate.

A. Description of original monument and accessories and/or subsequent restoration:

- 1822 GLO; FLETCHER, D.S.; SET POST; BEECH 10 S95W 14LKS, HEMLOCK 6 N56W 14LKS
- 1972 ROWE ENG.; ROWE, P.S. #11192; UNRECORDED SURVEY, JOB NO. C-0451-71; 1/2" RE-ROD; N45W 149.27' S.E. COR. HOUSE, N50E 52.09' NAIL & CAP IN 12" POPLAR, N75E 57.1 TOP CENTER N. END 24" X 47" C.M.P., S70E 82.0' TOP CENTER S. END 24" X 47" C.M.P., SOUTH 96.61' NAIL & CAP IN P.P.
- 1972 ROWE ENG.; ROWE, P.S. #11192, SURVEY L. 2, PG. 345; SHOWS CORNER ON SURVEY, NO DESCRIPTION OF MONUMENT LISTED, NO ACCESSORIES LISTED
- 1974 SPICER ENG.; MARTIN, P.S. #4699; SURVEY L. 453 PG. 991-994; 3/4" PIPE WITH 1/2" ROD INSIDE; S.E. 156.90' TO N.W. COR. OF CONC. PORCH OF HSE., N.W. 144.95' TO S.E. COR. OF CONC. PORCH OF HSE., N.E. 52.6' TO NAIL & CAP IN S. SIDE OF 12" POPLAR
- 1974 ROWE ENG.; ROWE, P.S. #11192, SURVEY L. 445, PG. 747; FND. 1/2" RE-ROD, N45W 149.27' S.E. COR. HSE., N50E 52.09' NAIL & CAP IN 12" POPLAR, N75E 57.10' TOP CENTER N. END 47' OF 24" C.M.P.

A. CONTINUED ON BACK:

B. Description of corner evidence found and/or method applied in restoring or reestablishing corner:

1999 FOUND 1/2" RE-ROD IN CENTERLINE OF PINKERTON ROAD

I ACCEPT THE 1/2" RE-ROD AS THE OBJECT OF RECORD AND AS A CAREFUL AND FAITHFUL PERPETUATION OF THE POSITION OF THE ORIGINAL CORNER.

C. Description of monument for corner and accessories established to perpetuate locating the position of the corner:

I REMOVED THE 1/2" RE-ROD AND SET THE STANDARD MONUMENT (5/8" X 36" ROD WITH BRASS CAP IN CONCRETE) STAMPED L-7, T11N-R7E, P.S. #44298 AND INSTALLED A MONUMENT BOX.

- N80E 58.13' SET P.K. NAIL & TAG #37276 IN 24" CMP (NORTH END)
- N39E 41.78' SET P.K. & TAG #37276 SE FACE 18" BOX ELDER
- S05W 96.61' SET P.K. NAIL & TAG #37276 E. FACE P. POLE
- S70E 84.38' SET P.K. NAIL & TAG #37276 NE FACE 13" TWIN TREE

Signed by Mark W. Powell Date 12-2-1999

Surveyor's Michigan License No. 44298

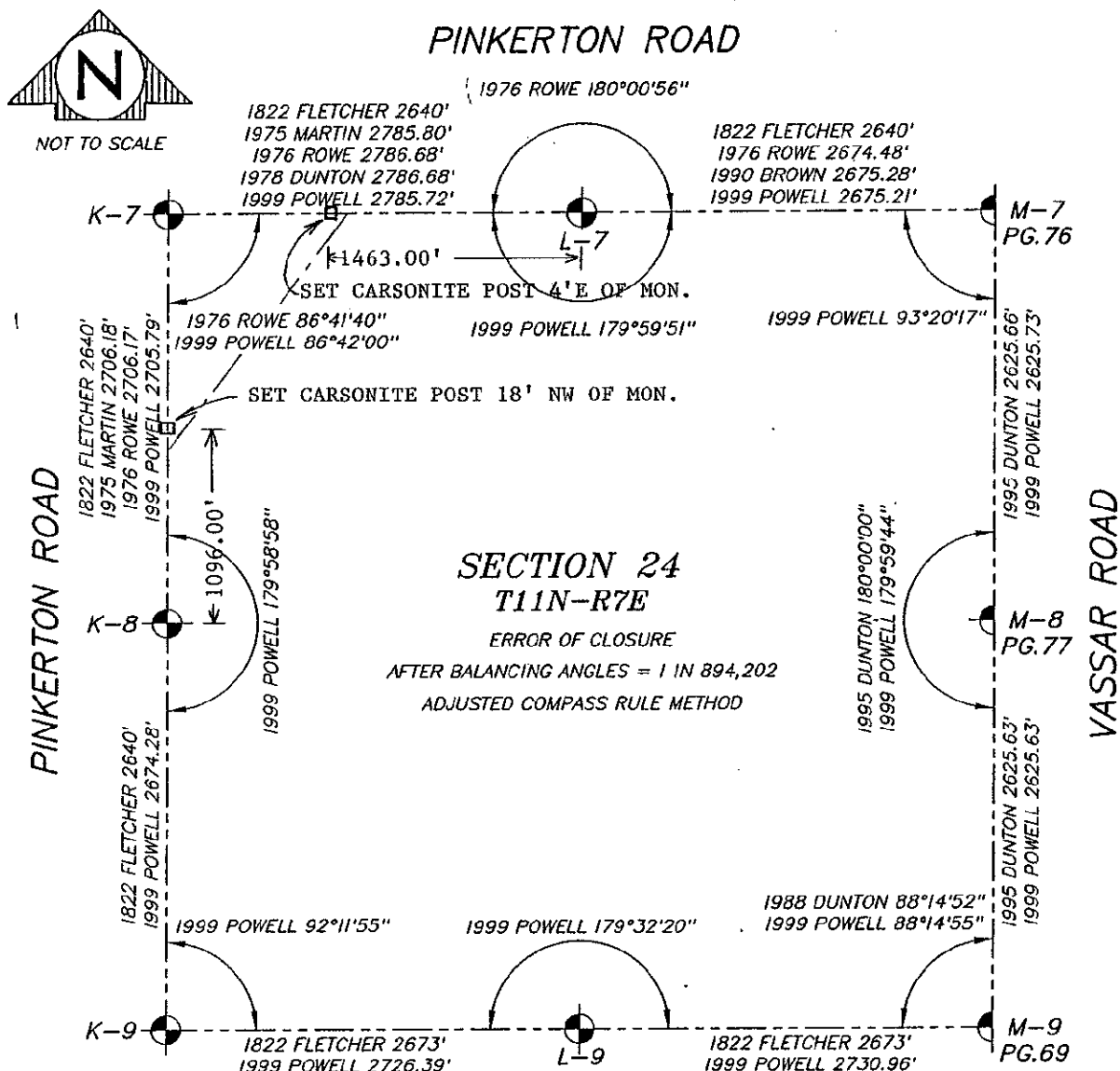
APPROVED
12-2-1999



FORM APPROVED BY MICHIGAN STATE BOARD OF LAND SURVEYORS, JAN. 28, 1971
REVISED MAY 14, 1976
REVISED JAN., 1983
ADAPTED FOR WORD PROCESSING MARCH, 1993

A. CONTINUED:

- 1975 MARTIN, P.S. #4699; SURVEY L. 453 PG. 862; 3/4" PIPE WITH 1/2" ROD INSIDE; S.E. 156.90' TO N.W. COR. OF CONC. PORCH OF HSE., N.W. 144.95' TO S.E. COR. OF CONC. PORCH OF HSE., N.E. 52.6' TO NAIL & CAP IN S. SIDE 12" POPLAR
- 1976 ROWE ENG.; ROWE, P.S. #11192; SURVEY L. 469, PG. 973-975; FND. 1/2" RE-ROD; N45W 149.27' S.E. COR. HSE., N50E 52.09' NAIL & CAP IN 12" POPLAR, SOUTH 96.61' NAIL & CAP IN P.P., N75E 57.1' TOP CENTER N. END OF 47' OF 24" C.M.P.
- 1976 ROWE ENG.; ROWE, P.S. #11192; SURVEY L. 469, PG. 146-148; FND. 1/2" RE-ROD; N45W 149.27' S.E. COR. HSE., N50E 52.09' NAIL & CAP IN 12" POPLAR, SOUTH 96.61' NAIL & CAP IN P.P., N75E 57.1' TOP CENTER N. END 47' OF 24" C.M.P.
- 1978 ROWE ENG.; DUNTON, P.S. #23503; SURVEY L. 490, PG. 687-688; FND. 1/2" RE-ROD; N45W 149.27' S.E. COR. HSE., N50E 52.09' NAIL & CAP IN 12" POPLAR, SOUTH 96.61' NAIL & CAP IN P.P., N75E 57.1' TOP CENTER N. END 47' OF 24" CMP
- 1986 ROWE ENG.; OWENS P.S. #20709; SURVEY L. 561 PG. 1471-1473; FND. 1/2" ROD; N45W 149.27' S.E. COR. HSE., N50E 52.09' NAIL & CAP 12" POPLAR, N75E 57.1' N. END 47" C.M.P., S70E 82.0' S. END 47" C.M.P., SOUTH 96.61' NAIL & CAP IN P.P.
- 1990 ROWE ENG.; BROWN, P.S. #33134; SURVEY L. 606, PG. 609; 1/2" REI IRON W/ CAP #11192, 10" BELOW ASPHALT; N50E 52.48' SET NAIL IN TRIPLE POPLAR (14"-10"-8"), N75E 58.13' CHISELED "+" N. END 24" CMP, S80E 73.26' P.K. IN 6" ELM, SOUTH 96.61' NAIL & CAP IN P.P.
- 1993 ROWE ENG.; FIELD, P.S. #37276; SURVEY L. 640, PG. 983-987; FND. 1/2" REI IRON W/ CAP #11192 10" BELOW ASPH.; N50E 52.48' SET NAIL IN TRIPLE POPLAR, N75E 58.13' CHISELED "X" N. END 24" CMP, S80E 73.26' P.K. IN 6" ELM, SOUTH 96.61' NAIL / CAP IN P.POLE.



□ = SET REFERENCE MONUMENT (5/8"x36" ROD WITH BRASS CAP IN CONCRETE) ON SECTION LINE