

**SURVEY &
REMONUMENTATION**

APR 25 1995

COMMISSION

LAND CORNER RECORDATION CERTIFICATE

Filing Requirement of Act 74, Mich. P.A. 1970

1994 REMONUMENTATION PROGRAM

For corners in TUSCOLA TWP.
TUSCOLA
(County)

Located In:

Corner Code #

1. Public Land Survey	T 11N R 07E	L-13
	T _____	_____
	T _____	_____
	T _____	_____
2. Property Controlling in Section	S _____	_____
	S _____	_____
3. Miscellaneous Property in Sec.	S _____	_____
	S _____	_____

4. Lot No. _____, Recorded Plat _____
5. Private Claims _____

I, JONATHAN M. FIELD, in a field survey on AUGUST 5 19 94, do hereby certify that under requirements of P.A. 74, Michigan P.A. of 1970, the corner points mentioned in lines 1 and 2 above were in conformance with regulations and rules therefore as required in the current manual of survey instructions of the United States Department of the Interior, Bureau of Land Management or by a decree of a Court of Law and/or that the corner points mentioned in lines 3, 4 and 5 above were in conformance with the rules of the Michigan Board of Land Surveyors or by a Decree of a Court of Law, established, re-established, monumented, re-monumented, recovered, found as expressed below:

NOTE: Not more than 4 corners, all in the same town and range, may be recorded on this certificate.

A. Description of original monument and accessories and/or subsequent restoration:
1821 GLO; WAMPLER, D.S.; SET POST; BEECH 14 S38 1/2E 9LKS., BEECH 4 N35W 22LKS.
1975 ROWE ENG.; DUNTON, P.S.#23503; WIT. CARD; FND. CONC. NAIL; NO WITS GIVEN

B. Description of corner evidence found and/or method applied in restoring or reestablishing corner:
1994 ROWE ENG.; FIELD, P.S.#37276; FND NO EVIDENCE OF MONUMENT AT CORNER

RE-ESTABLISHED CORNER POSITION BY SINGLE PROPORTION BETWEEN K-13 AND M-13, T11N-R7E POSITION THUS ESTABLISHED FALLS ON C/L ASPH. ROAD E-W AND ON LINE WITH OCCUPIED TREE ROW TO

SEE ALSO BACK OF THIS FORM

C. Description of monument for corner and accessories established to perpetuate locating the position of the corner:
L-13 SET STANDARD MONUMENT (5/8"X 36" ROD W/ BRASS CAP IN CONC. IN MON. BOX)
N85°E, 32.90' END. 1/2" PIPE
S72°E, 94.42' SET NAIL W/REMON TAG IN N. FACE 18" HICKORY
S32°E, 66.61' END. NAIL W/DELTA ENG. CAP IN N. FACE P.POLE
S15°E, 44.36' SET NAIL W/REMON TAG IN E. FACE 12" WHITE PINE
N05°E, 63.60' SET NAIL W/REMON TAG IN SW FACE 8" ELM

COPY

RECEIVED FOR RECORD
LIBER NO. _____ PAGE NO. _____
FILING NO. 465
TUSCOLA TWP.
91 NOV 15 AM 10:26
VIRGINIA M. McCLAREN
TUSCOLA COUNTY
REGISTER OF DEEDS
Register of Deeds Stamp & File Number

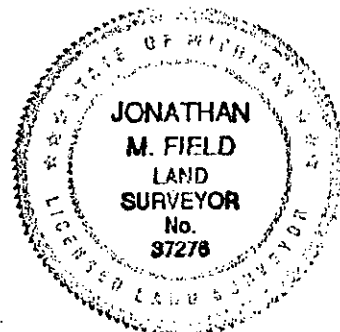
	A	B	C	D	E	F	G	H	I	J	K	L
1												
2	6	5	4	3	2	1						
3												
4	7	8	9	10	11	12						
5												
6	18	17	16	15	14	13						
7												
8	19	20	21	22	23	24						
9												
10	30	29	28	27	26	25						
11												
12	31	32	33	34	35	36						
13												

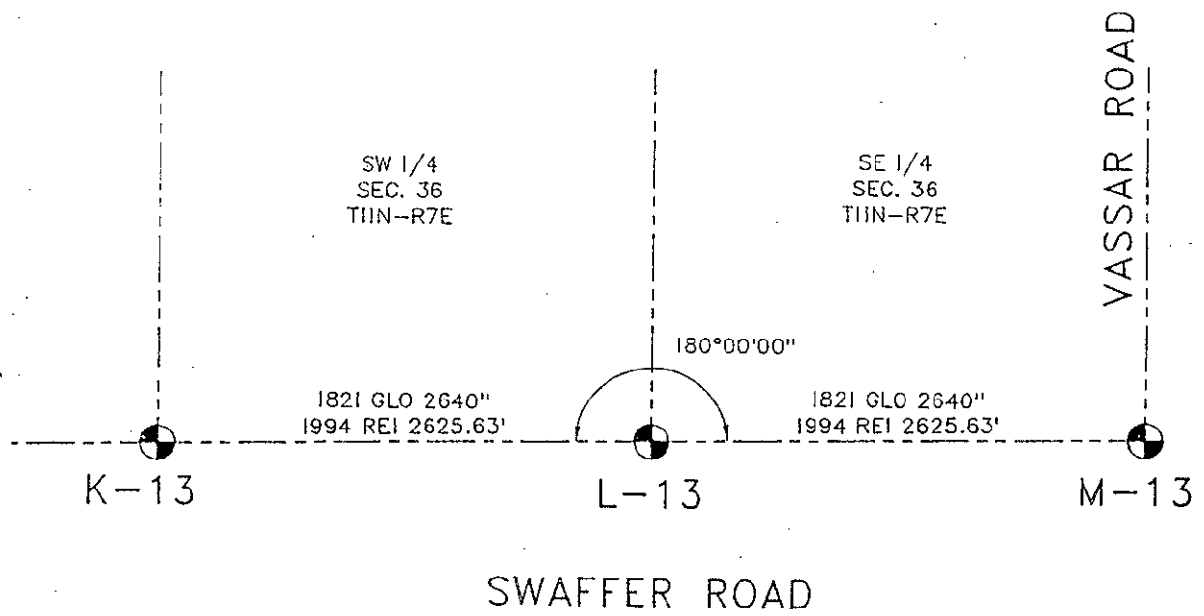
Signed by Jonathan M. Field
Surveyor's Michigan License No. 37276

Date 11-11-94

APPROVED
11-7-94

FORM APPROVED BY MICHIGAN STATE BOARD OF LAND SURVEYORS, JAN. 28, REVISED MAY 14, REVISED JAN., ADAPTED FOR WORD PROCESSING MARCH,





COBY