

1996 REMONUMENTATION PROGRAM

LAND CORNER RECORDATION CERTIFICATE
Filing Requirement of Act 74, Mich. P.A. 1970

For corners in Tuscola Township

TUSCOLA COUNTY
(County)

Located In:

Corner Code ://

1. Public Land Survey

T 11N R 7E
T 11N R 8E
T 10N R 7E
T 10N R 8E

M-13 ✓
A-13
M-1
A-1

2. Property Controlling in Section
3. Miscellaneous Property in Sec.

S ___ T ___ R ___
S ___ T ___ R ___
S ___ T ___ R ___
S ___ T ___ R ___

4. Lot No. _____, Recorded Plat _____
5. Private Claims _____

TUSCOLA COUNTY
REGISTER OF DEEDS

96 OCT 31 AM 10:39

RECEIVED FOR RECORD
LIBER NO. _____ PAGE NO. 79
FILE NO. TUSCOLA

Register of Deeds Stamp & File Number

I, Kenneth D. Dunton, in a field survey on August 27, 19 94, do hereby certify that under requirements of P.A. 74, Michigan P.A. of 1970, the corner points mentioned in lines 1 and 2 above were in conformance with regulations and rules therefore as required in the current manual of survey instructions of the United States Department of the Interior, Bureau of Land Management or by a decree of a Court of Law and/or that the corner points mentioned in lines 3, 4 and 5 above were in conformance with the rules of the Michigan Board of Land Surveyors or by a Decree of a Court of Law; established, re-established, monumented, re-monumented, recovered, found as expressed below:

NOTE: Not more than 4 corners, all in the same town and range, may be recorded on this certificate.

	A	B	C	D	E	F	G	H	I	J	K	L	M
2	6		5		4		3		2		1		
3													
4	7		8		9		10		11		12		
5													
6	18		17		16		15		14		13		
7													
8	19		20		21		22		23		24		
9													
10	30		29		28		27		26		25		
11													
12	31		32		33		34		35		36		
13													

A. Description of original monument and accessories and/or subsequent restoration:

1821 G.L.O. Notes
Joseph Wampler, D.S.
Int. T.L. 18.00 West and
14.20 West of a Cr. 30 N.
Elm 30 N 22 W ?
Elm 30 S 45 W 45
Corner M-1, T10N-R7E
Note: See Felton re-survey 1895 and error in setting this corner.
Sec. A continued on back of this form.

1950 Witness card by R. J. Black, L.S. #3384. Marked NW of Sec. 6, Millington Twp. It may also be the NE cor. of Sec. 1, Arbela.
N45°W 42.5' 24" maple.
S45°W 52.5' 16" maple.
(Note: This was 1890 witness tree)* see reverse
Note: Both trees gone as of 11-25-63.

B. Description of corner evidence found and/or method applied in restoring or reestablishing corner:

Found 1/2" iron rod in mon. box and accepted as the proper position of the original corner.

REMONUMENTATION

MAY 2 1997

COMMISSION

C. Description of monument for corner and accessories established to perpetuate locating the position of the corner:

Placed standard brass cap over 1/2" iron rod found in mon. box. Set 11-26-94.
Encased rod & brass cap in concrete in mon. box stamped standard brass cap Cor. M-1, T10N-R7E.
S18°11'W 86.62' set T. C. Remon. tag & spike in SE face 27" maple.
S23°41'W 67.03' fnd. spike & tag #20709 in E. face 36" maple.
N45°52'W 43.97' chiseled "+" atop NW end 18" CSP diag. cross culv.
S34°19'E 58.10' fnd. melted cap & spike in NW face p. pole. Set T. C. Remon. tag & spike in SW face of p. pole.
East 2.5' + physical centerline of N-S pavement.

✓ This corner is common with Corners M-1, T10N-R7E, A-1, T10N-R8E, & A-13, T11N-R8E.

Signed by Kenneth D. Dunton

Date 10-21-96

Surveyor's Michigan License No. 23503

APPROVED
10-21-96

STATE OF MICHIGAN
KENNETH D. DUNTON
LAND SURVEYOR
No. 28592
LICENSED PROFESSIONAL SURVEYOR
FORM APPROVED BY MICHIGAN STATE BOARD OF SURVEYORS, JAN. 28, 1971
REVISED MAY 14, 1975
REVISED JAN., 1983

COPY

Section A continued:

Aug. 12, 1976 Unrecorded survey by Irvin E. Choep, L.S. #6504, no mention of object found. Sketch on survey indicates the following:

COPY

SW 69.9' 30" maple

NW 53.97' t.p.

SE 59.0' p.p.

East 3808.64' fnd. 1" bar at S 1/4 cor. Sec.31, T11N-R8E.

Mar. 22, 1979 Land cor. rec. cert. by James L. Quist, L.S. #25868, filed on Page 60 of Vassar Township. Fnd. 5/8" rod. 14" deep. Raised with 3/4" pipe.

S35°E 57.80' Delta Eng. tag in p.p.

S30°W 66.04' Delta Eng. tag in 30" maple.

S45°W 94.75' NE cor. church bldg.

N40°W 54.23' Delta Eng. tag in t.p.

Oct. 11, 1982 Survey by Richard R. Boldt, L.S. #28405 with Rowe Engineering Inc. and recorded in Liber 536 on Page 1320, Tuscola County Records.

Found 3/4" pipe over 5/8" rod.

S35°E 57.80' Delta tag in p.p.

S30°W 66.04' Delta tag in 30" maple.

Aug. 14, 1991 Survey by Jack N. Owens, L.S. #20709 with Rowe Engineering Inc. and recorded in Liber 628 on Pages 742 through 745, Tuscola County Records. Found 1/2" rod in mon. box.

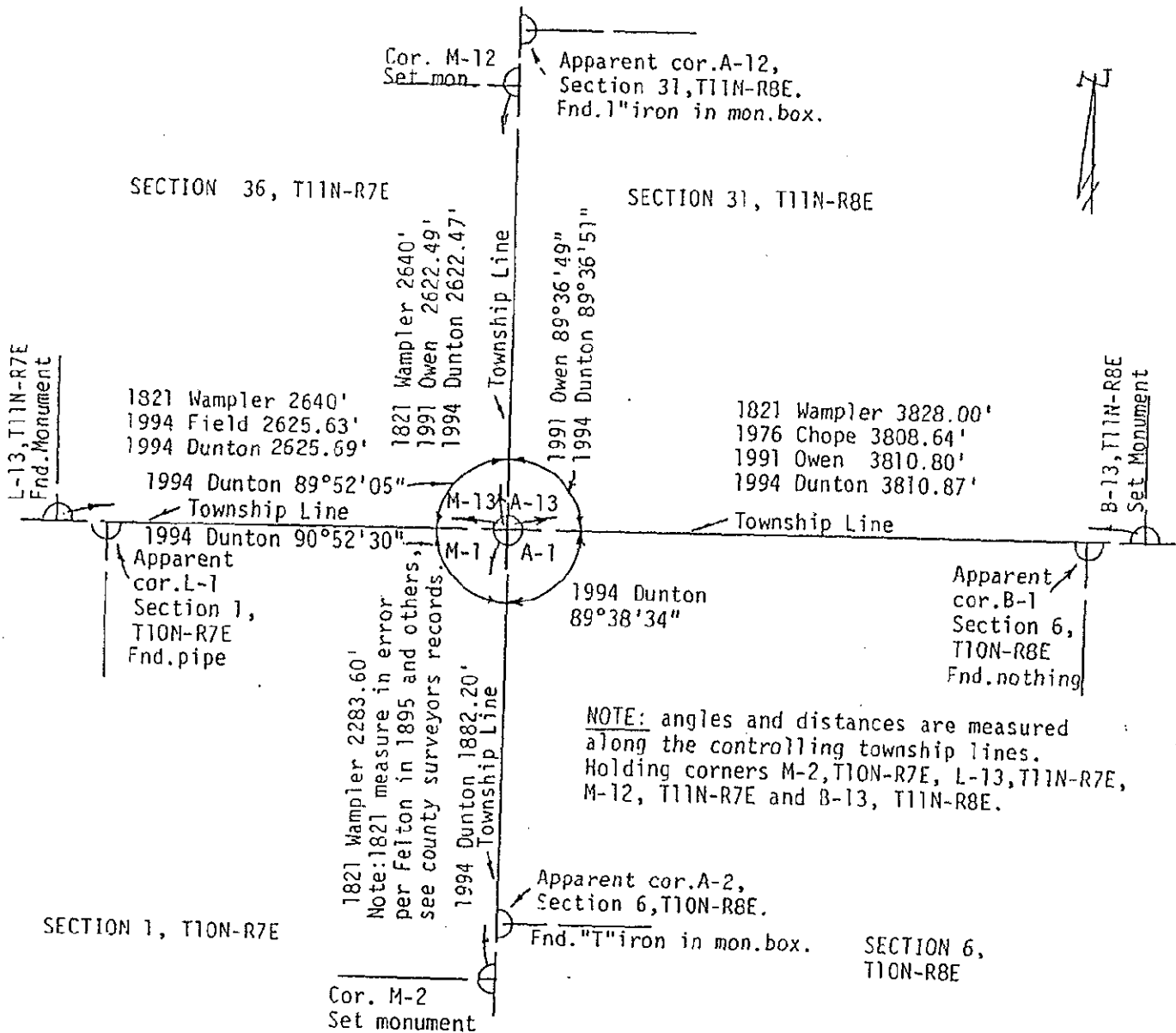
S30°W 66.99' set #20709 E. fc. 36" silver maple.

S35°E 57.76' Delta Eng. tag NW fc. p. pole.

N45°E 41.81' ctr. galv. street sign post.

N45°E 3.94' fnd. 1" rod in pavement.

* 4-15-1890 Teskey
Survey of Sec. 6, T10N-R8E
Stake & Stones
Shugar 2 S34W 79
Shugar 2 S61W 81



COPY