

**SURVEY &  
REMONUMENTATION**

**COPY**

**FEB 08 2001**

**SECTION**

**2000 REMONUMENTATION PROGRAM  
LAND CORNER RECORDATION CERTIFICATE**

**Filing Requirement of Act 74,  
Mich. P.A. 1970**

For corners in: VASSAR TWP.

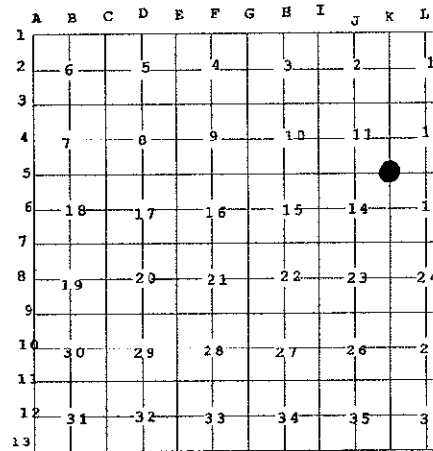
Tuscola Located In: Corner Code #  
(County)

- 1. Public Land Survey    T 11N R 8E                      K-5  
                                   T \_\_\_\_\_ R \_\_\_\_\_  
                                   T \_\_\_\_\_ R \_\_\_\_\_  
                                   T \_\_\_\_\_ R \_\_\_\_\_
- 2. Property Controlling    S \_\_\_\_\_ T \_\_\_\_\_ R  
     in section                      S \_\_\_\_\_ T \_\_\_\_\_ R
- 3. Miscellaneous            S \_\_\_\_\_ T \_\_\_\_\_ R  
     Property in Sec.            S \_\_\_\_\_ T \_\_\_\_\_ R

- 4. Lot No. \_\_\_\_\_, Recorded Plat
- 5. Private Claims

I, Kari M. Lohela, in a field survey on October 26, 20 00 do hereby state that under requirements of P.A. 74, Michigan P.A. of 1970, the corner points mentioned in lines 1 and 2 above were in conformance with regulations and rules therefore as required in the current manual of survey instructions of the United States Department of the Interior, Bureau of Land Management or by a decree of a Court of Law and /or that the corner points mentioned in lines 3, 4 and 5 above were in conformance with the rules of the Michigan Board of Land Surveyors or by a Decree of a Court of Law; established, re-established, monumented, recovered, found as expressed below:

NOTE: Not more than 2 corners, all in the same town and range, may be recorded on this certificate.



RECEIVED FOR RECORD  
 LIBER NO. \_\_\_\_\_ PAGE NO. \_\_\_\_\_  
 FILE NO. #116 Vassar  
 00 DEC 19 PM 1:34  
*[Signature]*  
 TUSCOLA COUNTY  
 REGISTER OF DEEDS  
 Register of Deeds Stamp & File Number

**A. Description of original monument and accessories and/or subsequent restoration:**

1822 G.L.O., JOSEPH FLETCHER, D.S., SET CORNER TO SECTIONS 11-12-13 & 14, HEMLOCK 20 N 39 W 13, HEMLOCK 24 S 86 W 28

\* SEPT. 30, 1977, LCRC P.46 VASSAR TWP., KENNETH DUNTON, PS 23503, FOUND 1/2' RE-ROD IN MON. BOX, N45°W 47.55' RLS TAG 11192 IN COR. FENCE POST, N44°E 43.82' FACE CONC. PROJECT MARKER, N45°E 47.32' MSHD TAG IN P.P., S55°E 75.20' RLS TAG 11192 IN 18" MAPLE, S45°E 45.70' MSHD TAG IN GUY POLE

\* AUG. 4, 1977, SURVEY L.477 P.276, KENNETH DUNTON, PS 23503, NO MENTION OF OBJECT OR ACCESSORIES

MARCH 1, 1979 LCRC P.50 VASSAR TWP., ARTHUR LEACH, PS 7236, FOUND MONUMENT WITH 3/4" STEEL ROD, N40°E 44.15' TOP CENTER R.O.W. MARKER, S75°E 75.30' NAIL IN W. FACE 18" MAPLE, N45°W 47.60' NAIL AND TAG IN FENCE POST RLS 11192

SEPT. 7, 1993, SURVEY L.647 PP.1156-1158, JONATHAN FIELD, PS 37276, FOUND 1/2" ROD IN MON. BOX, S30°E 63.59' CHIS. "X" IN N.E. COR. CONC. PAD, S60°E 75.59' SET NAIL W/TAG #37276 IN N. FACE 28" MAPLE, S45°W 65.04' SET NAIL W/TAG #37276 IN N. FACE 16" PINE, S45°E 43.71' SW FACE OF CONC. R.O.W. MARKER

FEB. 20, 1995 SURVEY L.670, PP.876-877, JONATHAN FIELD, PS 37276, OBJECT AND ACCESSORIES SAME AS SURVEY L.647, PP.1156-1158

SEPT. 2, 1997 SURVEY L.736, P.946, JONATHAN FIELD, PS 37276, OBJECT AND ACCESSORIES SAME AS SURVEY L.647, PP.1156-1158

**B. Description of corner evidence found and/or method applied in restoring or reestablishing corner:**

FOUND 1" PIPE IN MONUMENT BOX. RECOVERED 4 ACCESSORIES WHICH INDICATE THAT 1" PIPE IS IN SAME POSITION AS SURVEYS AND LCRC'S CITED ABOVE.

ACCEPTED 1" PIPE AS BEST AVAILABLE EVIDENCE OF ORIGINAL CORNER POSITION.

SECTION C. ON BACK OF FORM

**SURVEY &  
REMONUMENTATION**

FEB 08 2001

**K-5 T11N-R8E**

**SECTION**

C. Description of monument for corner and accessories established to perpetuate locating the position of the corner:

RAISED 1" PIPE WITH 5/8" BAR AND PLACED STANDARD BRASS CAP STAMPED K-5, T11N-R8E. ENCASED CAP AND BAR WITH CONCRETE IN EXISTING MONUMENT BOX.

N44°E, 43.67' FACE OF CONC. R.O.W. MARKER

S55°E, SET REMON. TAG & NAIL ABOVE FOUND NAIL/TAG IN N. FACE OF 24" MAPLE, 75.65'

S30°E, 63.59' FOUND CHISELED "X" IN NE CORNER OF CONC. PAD

S50°W, SET REMON. TAG & NAIL ABOVE FOUND SPIKE IN N. FACE OF 18" PINE, 64.95'

N60°W, 43.00' FACE OF STEEL ROAD SIGN POST

Signed by

*Kari M. Lohela*

Date 12/18/00

**APPROVED BY TUSCOLA COUNTY  
REMONUMENTATION PEER GROUP**

*MWP  
RWB*

12/13/2000

Surveyor's Michigan License No. 44289



FORM APPROVED BY MICHIGAN STATE BOARD OF PROFESSIONAL SURVEYORS, JAN. 28, 197

REVISED MAY 14, 197

REVISED JAN., 198  
REVISED OCT., 199

