

SURVEY &
REMONUMENTATION

DEC 0 2 1993

1993 REMONUMENTATION PROGRAM

COMMISSION

LAND CORNER RECORDATION CERTIFICATE

Filing Requirement of Act 74, Mich. P.A. 1970

VASSAR TOWNSHIP

For corners in

TUSCOLA

(County)

Located In:

Corner Code #

- | | | | | | |
|------------------------------------|---|-----|---|----|-----|
| 1. Public Land Survey | T | 11N | R | 8E | M-7 |
| | T | | R | | |
| | T | | R | | |
| | T | | R | | |
| 2. Property Controlling in Section | S | | T | | R |
| | S | | T | | R |
| 3. Miscellaneous Property in Sec. | S | | T | | R |
| | S | | T | | R |

4. Lot No. _____, Recorded Plat _____
5. Private Claims _____

I, Kenneth D. Dunton in a field survey on August 1, 19 93, do hereby certify that under requirements of P.A. 74, Michigan P.A. of 1970, the corner points mentioned in lines 1 and 2 above were in conformance with regulations and rules therefore as required in the current manual of survey instructions of the United States Department of the Interior, Bureau of Land Management or by a decree of a Court of Law and/or that the corner points mentioned in lines 3, 4 and 5 above were in conformance with the rules of the Michigan Board of Land Surveyors or by a Decree of a Court of Law; established, re-established, monumented, re-monumented, recovered, found as expressed below:

NOTE: Not more than 4 corners, all in the same town and range, may be recorded on this certificate.

A. Description of original monument and accessories and/or subsequent restoration:

1821 GLO Notes
Joseph Wampler, D.S.
Set post cor. Secs. 13 & 24
Hemlock 10" S65°E 10.56'
Hemlock 6" S66°W 11.22'

Oct. 18, 1881 Survey & map by A. L. Reed, Chief Engineer, Port Huron & Northwestern Railway Co. Map on file at Tuscola County Register of Deeds
M-7, T11N-R8E North 294' to Centerline Railroad.
A-9, T11N-R9E North 796' to Centerline Railroad.
This would indicate twp. job to be 502', it now measures 566.15'. G.L.O. notes Oct., 1834 by Burnham, D.S. Did not note fallings along west line T11N-R9E.

Note: Section A continued on back of form.

B. Description of corner evidence found and/or method applied in restoring or reestablishing corner: & accepted

Found 4" square cedar post 30" long-hacked to point on bottom. Also found 2 pieces of 2" x 18" angle iron against post on North & South faces. At 18" to 24" deep, found pieces of glass dish, china plates & one piece of crockery. 1993 measurement south to corner M-8 is 2605.29'. Compares to Felton in 1898 of 2605' and Black in 1960 of 2605.5'.

C. Description of monument for corner and accessories established to perpetuate locating the position of the corner:

Set 4" x 36" concrete monument with 36" x 5/8" rod through center and 2" standard brass cap stamped corner M-7, T11N-R8E.
S89°58'W 33.00' set 1/2" x 18" rod & cap #23503.
North 209.32' gauge of southerly rail of single set of railroad tracks.
N13°03'E 153.32' set T. C. Re-mon. tag & spike in NW face p. pole
N89°58'E 33.00' set 1/2" x 18" rod & cap #23503
S25°17'E 98.75' set T. C. Re-mon. tag & spike in NW face p. pole
S00°02'20"E 566.15' fnd. 2" pipe at corner A-9, T11N-R9E.

Signed by [Signature] Date September 27, 1993
Surveyor's Michigan License No. 23503

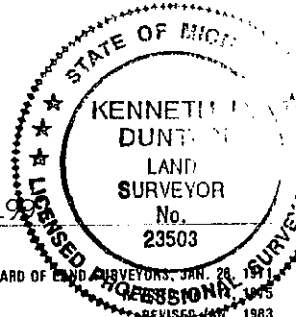
APPROVED

RECEIVED FOR RECORD
VASSAR TWP
TUSCOLA COUNTY
REGISTER OF DEEDS
93 OCT 22 PM 2:43
LIBER NO. _____ PAGE NO. _____
FILM NO. #84

Register of Deeds Stamp & File Number

	A	B	C	D	E	F	G	H	I	J	K	L	M
2	6		5		4		3		2		1		
3													
4	7		8		9		10		11		12		
5													
6	18		17		16		15		14		13		
7													
8	19		20		21		22		23		24		
9													
10	30		29		28		27		26		25		
11													
12	31		32		33		34		35		36		
13													

COPY



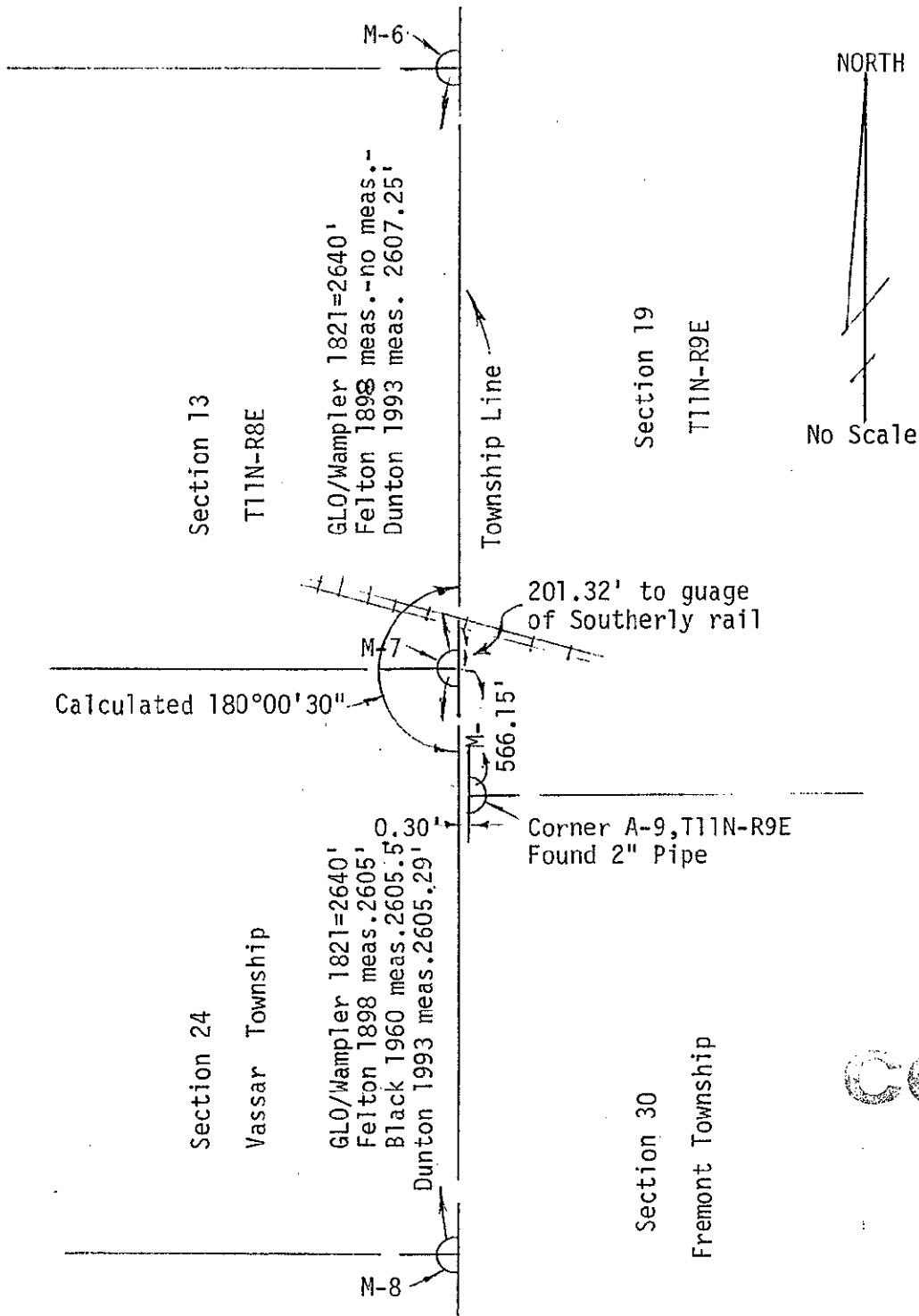
January 20, 1898 & April 8, 1898 G. B. Felton, County Surveyor

Set from meas. cedar post, glass & crockery corner

Maple 3" S6½°W 60 1/2 feet

Measure from corner M-8 to M-7 = 2605'

April 2, 1960 R. J. Black, R.L.S. #3384 Survey unrecorded for James Churchill, Vassar, MI. No accessories given. Measured 2605.5' corner M-8 to M-7.



COPY