

DEC 02 1993

COMMISSION

1993 REMONUMENTATION PROGRAM LAND CORNER RECORDATION CERTIFICATE

Filing Requirement of Act 74, Mich. P.A. 1970

RECORDED OR RECORDED VASSAR TWP LIBERTY NO. PAGE NO. PH 119 110 # 78

93 OCT 22 PM 2:41

VERGILIA H. MCCLAREN TUSCOLA COUNTY REGISTER OF DEEDS

For corners in

VASSAR TOWNSHIP

TUSCOLA

(County)

Located In:

Corner Code: #

- 1. Public Land Survey T 11N R 8E M-13
2. Property Controlling in Section S T R
3. Miscellaneous Property in Sec. S T R

COPY

Register of Deeds Stamp & File Number

- 4. Lot No. Recorded Plat
5. Private Claims

Grid table with columns A-M and rows 2-13 containing numbers 1-36.

I, Kenneth D. Dunton in a field survey on September 19, 1993 do hereby certify that under requirements of P.A. 74, Michigan P.A. of 1970, the corner points mentioned in lines 1 and 2 above were in conformance with regulations and rules therefore as required in the current manual of survey instructions of the United States Department of the Interior, Bureau of Land Management or by a decree of a Court of Law and/or that the corner points mentioned in lines 3, 4 and 5 above were in conformance with the rules of the Michigan Board of Land Surveyors or by a Decree of a Court of Law; established, re-established, monumented, re-monumented, recovered, found as expressed below:

NOTE: Not more than 4 corners, all in the same town and range, may be recorded on this certificate.

A. Description of original monument and accessories and/or subsequent restoration:

1821 G.L.O. notes \*Sept. 11, 1978 Sept. 25, 1978 Act 74, Vassar Township 11-8 Page 53
Joseph Wampler, D.S. see back of By David T. Rowe, R.L.S. #11192
Set post cor. section form. Set 1/2" Re-rod w/cap at proportionate distance between NE cor. Sec. 36, Vassar and SW cor. Sec. 6, Watertown Twp.

\*\*See note c back of form

Note: Section A. continued on back of form

B. Description of corner evidence found and/or method applied in restoring or reestablishing corner:

Found 1/2" rod per accessories Act 74 - Page 53, Vassar Township. Measured from 1/2" re-rod found, North to corner M-12 a distance of 2667.78'. Additional measurements along township line indicate Wampler's chain measured short, (65.2' per chain - approximate). Also measured North-South distance through swamp area and proportioned to Wampler. All measurements indicate GLO corner should be 60'± Northerly of 1/2" re-rod found. Dug 5' x 8' trench 60' North and found remains of cedar post leaning Southeasterly. Hack marks indicate it had been cut (not a windfall tree). Straightened cedar post and set temporary corner - 1/2" x 24" re-rod in center of cedar post. See sketch of measurements on back of this form.

C. Description of monument for corner and accessories established to perpetuate locating the position of the corner:

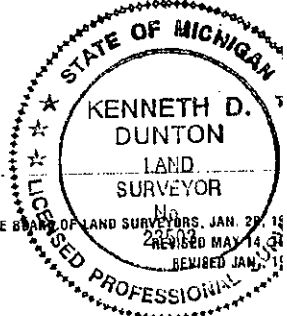
Sept. 25, 1993 - removed temporary 1/2" rod and cedar post. Set 4" x 36" concrete monument with 36" x 5/8" rod through center and 2" standard brass cap stamped corner M-13, T11N-R8E and corner M-1, T10N-R8E. placed remains of cedar post around monument. S30°52'W 35.00' fnd 11192 tag & spike in NE face 12" ash S85°02'W 31.20' set T.C. Re-mon. tag & spike in South face 6" ash N56°47'W 36.74' set T.C. Re-mon. tag & spike in SW face 10" ash N50°28'W 59.35' set T.C. Re-mon. tag & spike in NE face 10" oak S04°26'E 60.67' fnd 1/2" rod per Act 74, Vassar Township, Page 53 S34°23'W 5.07' fnd metal strap-placed 1/2" x 12" threaded rod at NE end

Signed by [Signature]

Date 9-27-93

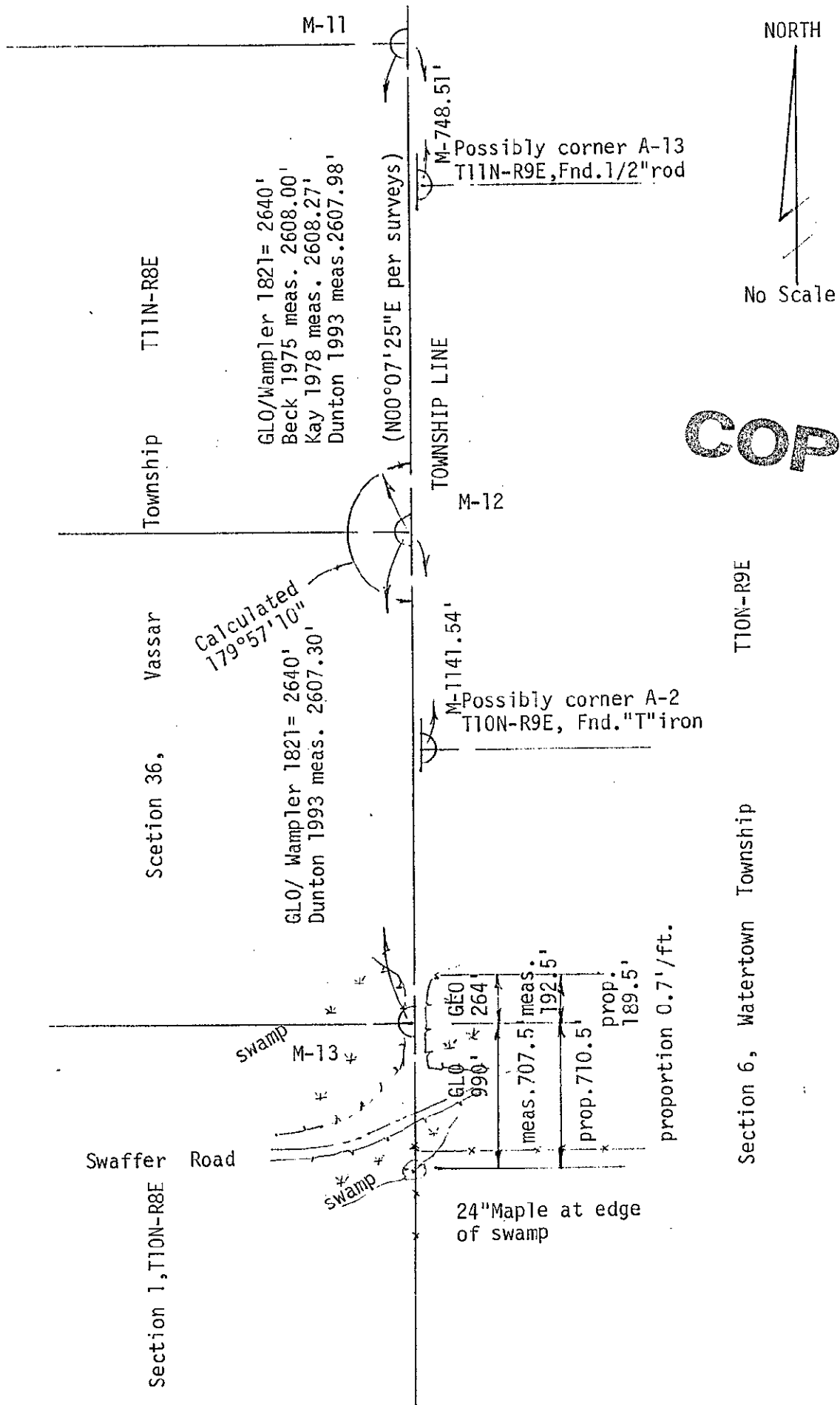
Surveyor's Michigan License No. 23503

APPROVED 9-27-93 [Signatures]



Continued from Section A. on front of this form:  
 Feb. 16, 1979 Survey Liber 496- Pages 074 & 075 by David T. Rowe,  
 R.L.S. #11192. No statement or object found or set. No accessories.  
 Note: A witness card on file with Rowe Engineering, Caro, MI and dated  
 Sept. 8, 1978 and updated Jan. 29, 1979 indicate the same accessories  
 shown on Act 74 - Page 53, Vassar Township.

\*Sept. 11, 1978 Survey Liber 491, Pages 989 & 990 by  
 David T. Rowe, RLS 11192. Accessories same as shown  
 on Act 74, Page 53, Vassar Township.  
 \*\*Notes A review of Rowe Eng. records does not indicate  
 any field work to back up statement re: porportion  
 between corners to establish SE corner Sec. 36, 11-8.



**COPY**

