

1996 REMONUMENTATION PROGRAM
LAND CORNER RECORDATION CERTIFICATE
Filing Requirement of Act 74, Mich. P.A. 1970

For corners in Koylton Township

<u>Tuscola</u> (County)	Located In:	Corner Code #
1. Public Land Survey	T11NR11E	<u>A-3</u> ✓
	T11NR10E	<u>M-3</u>
	T R	
	T R	
2. Property Controlling In Section	S 6 T11NR11E	#0002
	S 7 T11NR11E	#0001
3. Miscellaneous Property in Sec.	S T11NR10E	#0002
	S T11NR10E	#0001

RECEIVED FOR RECORD
LIBER NO. _____ PAGE NO. 44
FILE NO. Koylton
96DEC 10 PM 4:48
TUSCOLA COUNTY
REGISTER OF DEEDS
Register of Deeds Stamp & File Number

4. Lot No. _____, Recorded Plat _____
5. Private Claims _____

I, Kenneth D. Dunton in a field survey on Apr. 28, 1996 do hereby state that under requirements of P.A. 74, Michigan P.A. of 1970, the corner points mentioned in lines 1 and 2 above were in conformance with regulations and rules therefore as required in the current manual of survey instructions of the United States Department of the Interior, Bureau of Land Management or by a decree of a Court of Law and for that the corner points mentioned in lines 3, 4 and 5 above were in conformance with the rules of the Michigan Board of Land Surveyors or by a Decree of a Court of Law, established, re-established, monumented, recovered, found as expressed below:

NOTE: Not more than 2 corners, all in the same town and range, may be recorded on this certificate.

A	B	C	D	E	F	G	H	I	J	K	L	M
1												
2	6	5	4	3	2	1						
3												
4	7	8	9	10	11	12						
5												
6	18	17	16	15	14	13						
7												
8	19	20	21	22	23	24						
9												
10	30	29	28	27	26	25						
11												
12	31	32	33	34	35	36						
13												

A. Description of original monument and accessories and/or subsequent restoration:

GLO 1834	Nov. 3, 1882	April 14, 1886
Harvey Parke, D.S.	John A. Teskey, Co. Surveyor	John A. Teskey, Co.
Set Post Cor. Secs. 1 & 12	Sec. 1, T11N-R10E, Pages 28 & 29	Surveyor, Sec. 6, T11N-R11E, Pages 46 & 47
Tamarack 5 N 36 W 35	Tamarack 5 N36W35	See S.E. cor. Sec. 1 of Dayton Twp., Page 28
Tamarack 5 S 31 1/2 W 36	Tamarack 5 S 76 1/2 E 67 1/4	
Corner M-3, T11N-R10E	Tamarack 5 S 31 1/2 W 36	

Note: Section A continued on back of form.

B. Description of corner evidence found and/or method applied in restoring or reestablishing corner:

Investigated the area from a boat as the water in the location of Corner M-3 on April 27 & 28, 1996 was 8'± in depth. Surveyed & proportioned to adjacent Corners per G.L.O. & county surveyor's re-survey records. Accepted proportionate location as the best position of the original corner.

Note: No corner set at M-3, T11N-R10E. See sketch on back of form for location of witness monuments 0001 & 0002. See section below for accessories to witness monuments 0001 & 0002.

Note: Corner A-3, T11N-R11E & 0001 & 0002 are common with corner M-3, T11N-R10E & 0001 & 0002.

C. Description of monument for corner and accessories established to perpetuate locating the position of the corner:

Set standard monuments stamped wit. mon. #0001, T11N-R10E and wit. mon. #0002, T11N-R10E.

Accessories to Wit. Mon. #0001

N48°E 57.63' set T.C. tag & spike in SE face 12" Maple.
N85°07'E 29.69' fnd. 1/2" rod per Gravlin survey.
S85°E 21.3'± center 42" stump.
N85°W 32.45' set T.C. tag & spike in S. face 10" Oak.

Accessories to Wit. Mon. #0002

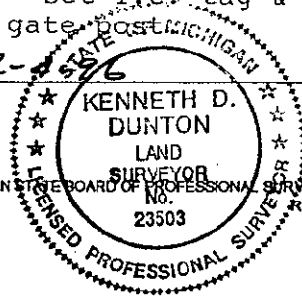
N35°E 64.40' SW corner wd. fr. shed.
East 66.00' SW corner house.
S30°E 7.70' fnd. 1/2" rod (bent).
S03°E 81.39' set 1/2" x 18" rod.
S30°W 41.37' set T.C. tag & spike in SE face 8" gate.

Signed by [Signature]
Surveyor's Michigan License No. 23503

Date 12-4-96

APPROVED

12-4-96



Note: Accessories continued on back of form. FORM APPROVED BY MICHIGAN BOARD OF PROFESSIONAL SURVEYORS, JAN. 28, 1971
REVISED MAY 14, 1975
REVISED JAN., 1983
REVISED OCT., 1995

MEMO

MAY 20 1997

COPIES

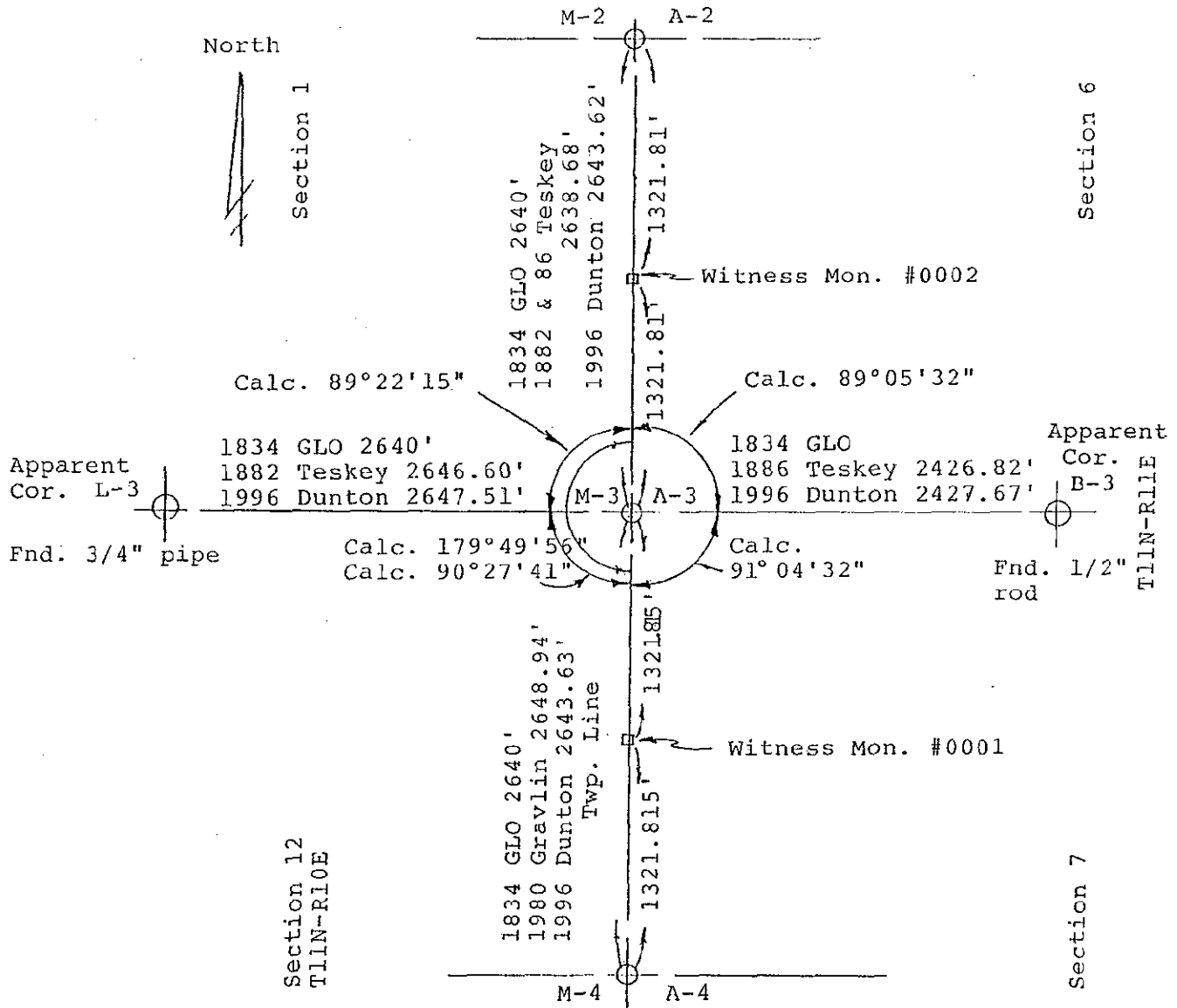
23503

Date of Survey unknown
 Edward Teskey, County Surveyor 1895-1898
 Section 7, T11N-R11E
 Cedar stake previously set.

Aug. 23, 1974
 Survey by David T. Rowe, Land Surveyor #11192, Liber 443-Page 850
 No mention of object fnd. or set or accessories.
 (inaccessible in swamp)

Aug. 18, 1980
 Survey by Earl E. Gravlin, Land Surveyor #23510, Liber 508-Pages 1092 & 1093.
 No mention of object found or set or accessories.
 Note: Survey indicates cor. in water.

July 22, 1993
 Unrecorded survey by Earl E. Gravlin, Land Surveyor #23510, Job No. 93641.
 No mention of object found or set or accessories.



Section C continued

Witn. Mon. #0001

S83°E 71.73' set T.C. tag & spike in
 N. face 15" Maple.
 N52°20'W 4.25' fnd. 1/2" rod per
 Gravlin survey.
 West 10' set carsonite post
 S08°W 28.50' set 1/2" x 18" rod.

Wit. Mon. #0002

S70°W 21.80' set T.C. tag & spike in
 SE face 10" wood cor. post.