

DEC 07 1994

COPY

COMMISSION

1994 REMONUMENTATION PROGRAM
LAND CORNER RECORDATION CERTIFICATE

Filing Requirement of Act 74, Mich. P.A. 1970

For corners in KOYLTON TOWNSHIP

TUSCOLA

(County)

Located in:

Corner Code #

- 1. Public Land Survey T 11N R 11E M-3
- T R
- T R
- T R
- 2. Property Controlling S T R
- in Section S T R
- 3. Miscellaneous S T R
- Property in Sec. S T R

- 4. Lot No. _____, Recorded Plat _____
- 5. Private Claims _____

RECEIVED FOR RECORD
LIBER NO. _____ PAGE NO. _____
FILING NO. # 32
KOYLTON Twp.
94 NOV -9 PM 2:20
VIRGINIA H. MCLAREN
TUSCOLA COUNTY
REGISTER OF DEEDS

Register of Deeds Stamp & File Number

I, Lionel Roy Emery, in a field survey on July 4, 1994, do hereby certify that under requirements of P.A. 74, Michigan P.A. of 1970, the corner points mentioned in lines 1 and 2 above were in conformance with regulations and rules therefore as required in the current manual of survey instructions of the United States Department of the Interior, Bureau of Land Management or by a decree of a Court of Law and/or that the corner points mentioned in lines 3, 4 and 5 above were in conformance with the rules of the Michigan Board of Land Surveyors or by a Decree of a Court of Law; established, re-established, monumented, re-monumented, recovered, found as expressed below:

NOTE: Not more than 4 corners, all in the same town and range, may be recorded on this certificate.

	A	B	C	D	E	F	G	H	I	J	K	L
2	6		5		4		3		2		1	
3												
4	7		8		9		10		11		12	
5												
6	16		17		16		15		14		13	
7												
8	19		20		21		22		23		24	
9												
10	30		29		28		27		26		25	
11												
12	31		32		33		34		35		36	
13												

A. Description of original monument and accessories and/or subsequent restoration:

- 1834 (Gov't. Land Office Notes) Harvey Parke, D.S. -Set post Cor. Sections 1 & 12- Elm 16 N25W 16 Maple 10 S65 1/2 W 14
- 1882 (County Surveyor's Record) John A. Teskey, Tuscola County Surveyor - "identified from Elm 16 N25W 20" Perpetuated corner with Stake --no additional accessories
- 1977 (Land Corner Recordation Certificate) Kenneth D. Dunton, P.S. 23503 -Fnd small pieces of wood post. Set 1/2" re-rod w/cap RLS 11192. N40°E 45.53' RLS 11192 in TP; S40°E 34.85' to Rd ** sign post; S50°E 42.35' to S. end of 24" CMP
- 1987 (Survey -Liber 578, pages 58 and 59) Kenneth D. Dunton, P.S. 23503 -fnd. 1/2" rod & cap- did not re-witness.

B. Description of corner evidence found and/or method applied in restoring or reestablishing corner:

Found 1/2" reinforcing rod with Cap 11192.
Accepted found marker to be marking original corner.

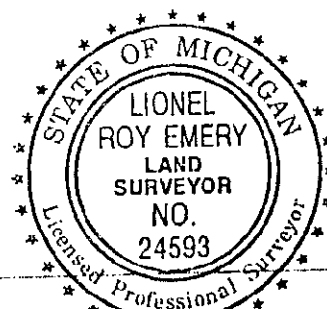
C. Description of monument for corner and accessories established to perpetuate locating the position of the corner:

- Removed rod and replaced with Standard Tuscola County Concrete Monument w/2" Brass Cap stamped M3 T11N / R11E
- N40°E, 45.76' T.C. Remon. tag in SE face of Telephone pole stub
- S20°W, 71.90' T.C. Remon. tag in NW face of 4" forked Ash
- S60°W, 31.55' T.C. Remon. tag in NW face of 10" Poplar
- N80°W, 22.85' T.C. Remon. tag in N face of 4" Ash

Signed by Lionel Roy Emery
Surveyor's Michigan License No. 24593

Date Aug. 31, 1994

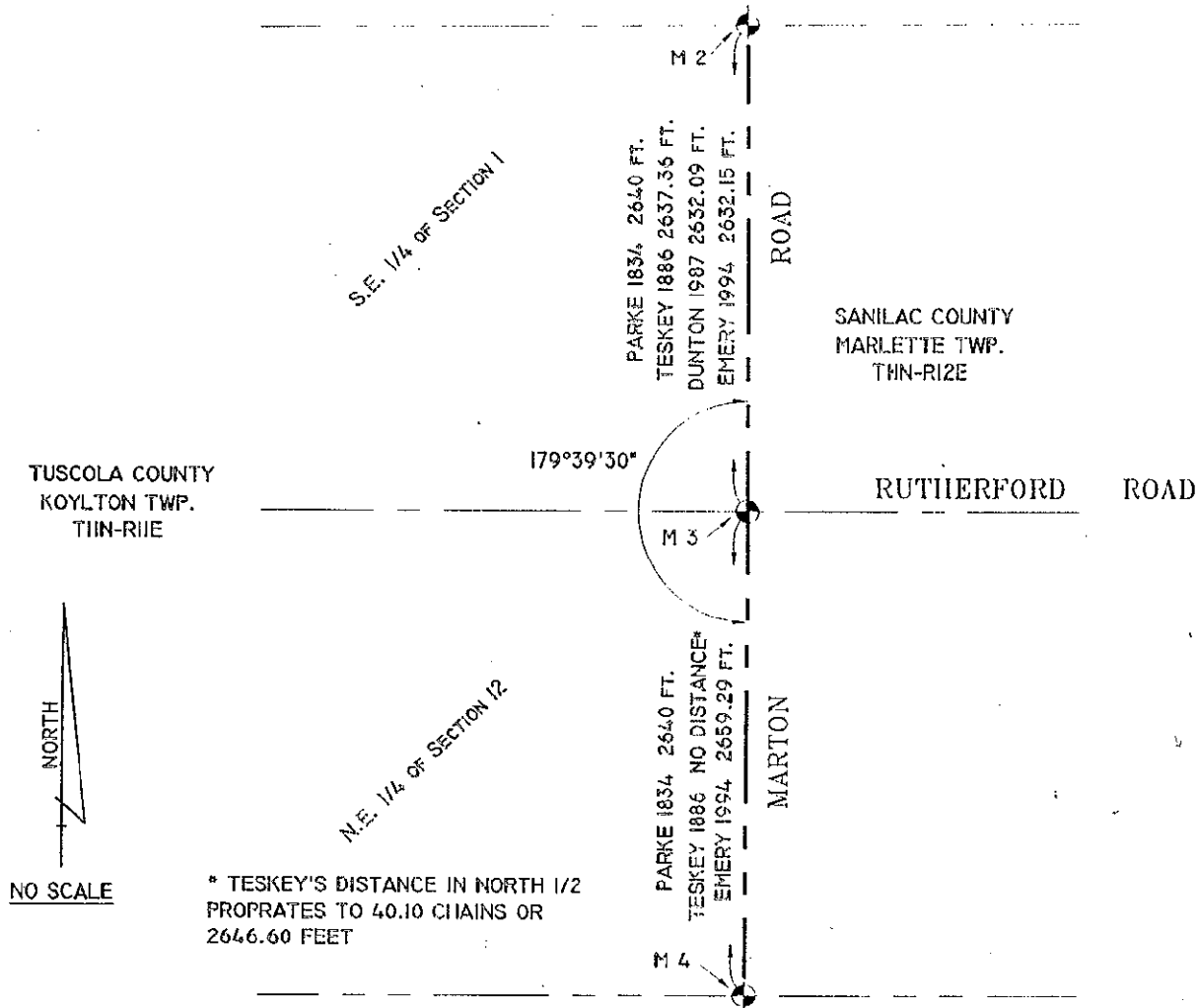
APPROVED
E-31-94
1600
gmg
10/8/94



**

1977 (Survey - Liber 4/5, page 398) Kenneth D. Dunton, P.S. 23503 - 1/2" re-rod, Does not say whether found or set - N40°E 45.53' RLS tag 11192 TP; S40°E 34.85' Rd. sign post; S50°E 42.35' S. end 24" CMP

COPY



C. F.

CC 34