

**SURVEY &
REMONUMENTATION**

MAY 05 1997

1996 REMONUMENTATION PROGRAM
LAND CORNER RECORDATION CERTIFICATE
Filing Requirement of Act 74, Mich. P.A. 1970

For corners in **COMMISSION**
Juniata Township

Tuscola (County) Located In: Corner Code #7

- 1. Public Land Survey T 12N R 8E. **A-10** ✓
T R
T 12N R 7E M-10
T R
- 2. Property Controlling S T R
in Section S T R
- 3. Miscellaneous S T R
Property in Sec. S T R

4. Lot No. _____, Recorded Plat _____
5. Private Claims _____

I, Kenneth D. Dunton in a field survey on October 15, 19 95, do hereby certify that under requirements of P.A. 74, Michigan P.A. of 1970, the corner points mentioned in lines 1 and 2 above were in conformance with regulations and rules therefore as required in the current manual of survey instructions of the United States Department of the Interior, Bureau of Land Management or by a decree of a Court of Law and/or that the corner points mentioned in lines 3, 4 and 5 above were in conformance with the rules of the Michigan Board of Land Surveyors or by a Decree of a Court of Law; established, re-established, monumented, re-monumented, recovered, found as expressed below:

NOTE: Not more than 4 corners, all in the same town and range, may be recorded on this certificate.

A. Description of original monument and accessories and/or subsequent restoration:

1834 G.L.O. Notes
Orange Risdon, D.S.
Set 1/4 Section Post
Beech 8 S46W 25L
Beech 14 N31W 34L
Corner M-10, T12N-R7E

1956 M.S.H.D. Plans show corner, no witnesses.
Nov. 27, 1978 Survey by Arthur H. Leach, L.S. #7235, recorded in Liber 494, Page 640, Tuscola County Records. Fnd. 3/4" pipe 6" below surface. N60°E 37.95' to p.k. nail in S. face 6" crabapple tree, N45°W 61.45' to p.k. nail in S. face 6" apple tree, S30°W 94.60' to top ctr. tele. riser.
Nov. 30, 1978 Act 74 form filed by Arthur H. Leach, L.S. #7235 filed on Page 46 Denmark Township. Same accessories as Survey Liber 494, Page 640.

B. Description of corner evidence found and/or method applied in restoring or reestablishing corner:

Found 3/4" pipe in place. Accepted pipe as the proper position of Corner A-10.

C. Description of monument for corner and accessories established to perpetuate locating the position of the corner:

Removed 3/4" pipe and placed concrete monument with standard brass cap stamped corner M-10, T12N-R7E. Placed monument box over monument. Set 11-19-95.
S21°20'W 94.6' top center phone pedestal (leaning).
S23°08'W 89.25' NW corner conc. base of phone pedestal.
N89°47'W 148.17' set T. C. Remon. tag & spike in N. face p. pole.
N20°13'W 42.19' set 1/2" x 18" re-rod in road shoulder.
N65°59'E 37.95' set T. C. Remon. tag & spike in S. face 12" apple tree.
Note: This corner is common with M-10, T12N-R7E.

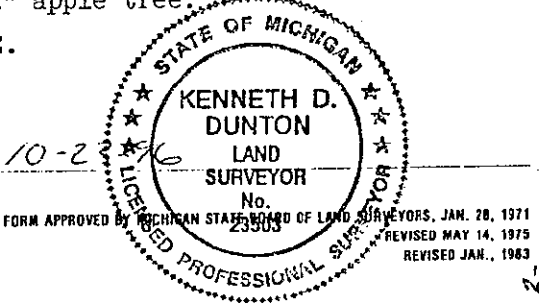
RECEIVED FOR RECORD
LIBER NO. _____ PAGE NO. _____
FILE NO. #81 Juniata
56 OCT 31 AM 10:38
TUSCOLA COUNTY
REGISTER OFFICES

Register of Deeds Stamp & File Number

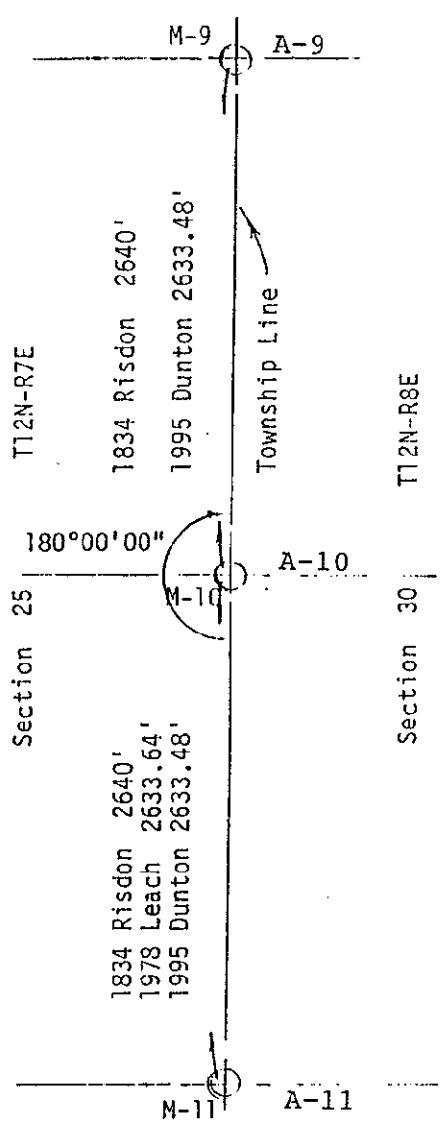
A	B	C	D	E	F	G	H	I	J	K	L	M
2	6	5	4	3	2	1						
3												
4	7	8	9	10	11	12						
5												
6	18	17	16	15	14	13						
7												
8	19	20	21	22	23	24						
9												
10	30	29	28	27	26	25						
11												
12	31	32	33	34	35	36						
13												

Signed by _____ Date 10-23-96
Surveyor's Michigan License No. 23503

APPROVED
10-23-96
Jm1
RFB
J.P.C.



COPY



COPY