

MAY 15 1997

COMMISSION

1996 REMONUMENTATION PROGRAM

LAND CORNER RECORDATION CERTIFICATE
Filing Requirement of Act 74, Mich. P.A. 1970

For corners in Juniata Township

Tuscola (County)

Located In:

Corner Code #/

- 1. Public Land Survey T 12N R 8E
T R
T 12N R 7E
T R
- 2. Property Controlling S T R
in Section S T R
- 3. Miscellaneous S T R
Property in Sec. S T R

A-12 ✓
M-12

- 4. Lot No. _____, Recorded Plat _____
- 5. Private Claims _____

TUSCOLA COUNTY REGISTER OF DEEDS

RECEIVED FOR RECORD
LIBER NO. _____ PAGE NO. # 79
Juniata
95 OCT 31 AM 10:38

Register of Deeds Stamp & File Number

I, Kenneth D. Dunton, in a field survey on October 15, 1995, do hereby certify that under requirements of P.A. 74, Michigan P.A. of 1970, the corner points mentioned in lines 1 and 2 above were in conformance with regulations and rules therefore as required in the current manual of survey instructions of the United States Department of the Interior, Bureau of Land Management or by a decree of a Court of Law and/or that the corner points mentioned in lines 3, 4 and 5 above were in conformance with the rules of the Michigan Board of Land Surveyors or by a Decree of a Court of Law; established, re-established, monumented, re-monumented, recovered, found as expressed below:

NOTE: Not more than 4 corners, all in the same town and range, may be recorded on this certificate.

A	B	C	D	E	F	G	H	I	J	K	L	M
2	6	5	4	3	2	1						
3												
4	7	8	9	10	11	12						
5												
6	18	17	16	15	14	13						
7												
8	19	20	21	22	23	24						
9												
10	30	29	28	27	26	25						
11												
12	31	32	33	34	35	36						
13												

A. Description of original monument and accessories and/or subsequent restoration:

1834 G.L.O. Notes Orange Risdon, D.S. Set 1/4 Section Post Lynn 12 S12W 18L Beech 18 N43W 28L
 Old T.C.R.C. plans Vassar Road - no date 2" pipe. N70°W 14' power pole. East 45.25' power pole. N50°E 51.7' brass tab in root of 12" maple.
 M.S.H.D. plans 1956. Corner shown, no witnesses given.
 M.S.H.D. plans 1961. 3/4" iron pipe 5" deep. N85°W 26.74' 24" basswood. N40°E 52.89' 25" maple, S18°E 58.08' 16" maple.
 Aug., 1972 Act 74 form filed by David T. Rowe, R.L.S. #11192, Page 15 of Denmark Twp. Fnd. 1" pipe. N35°E 52.25' nail in 24" maple. S25°E 57.72' nail in 16" maple. N65°W 73.81' nail in p.p. East, 45.46' nail in p.p.

B. Description of corner evidence found and/or method applied in restoring or reestablishing corner:

Found 3/4" iron bar in monument box. Accepted iron bar in monument box as the proper position of Corner A-12.

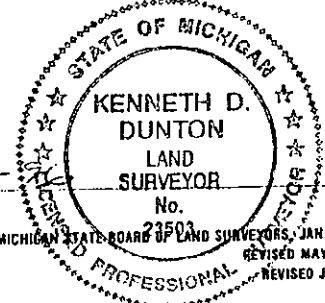
C. Description of monument for corner and accessories established to perpetuate locating the position of the corner:

Set standard brass cap stamped corner M-12, T12N-R7E, over 3/4" iron bar. Encased brass cap & iron bar in concrete in monument box. Set 11-19-95.
 S50°W 21.28' set 1/2" x 18" re-rod in road shoulder.
 N74°41'W 73.85' set T. C. Remon. tag & spike over #11192 tag & nail found in E. face p. pole.
 N88°16'E 45.49' set T. C. Remon. tag & spike over #11192 tag & nail found in W. face p. pole.
 N32°27'E 46.60' chiseled notch atop S. end 12" CSP drive culvert.

Note: This corner is common to Corner M-12, T12N-R7E.

Signed by [Signature] Date 10-21-95
Surveyor's Michigan License No. 23503

APPROVED
10-21-96
[Signature]

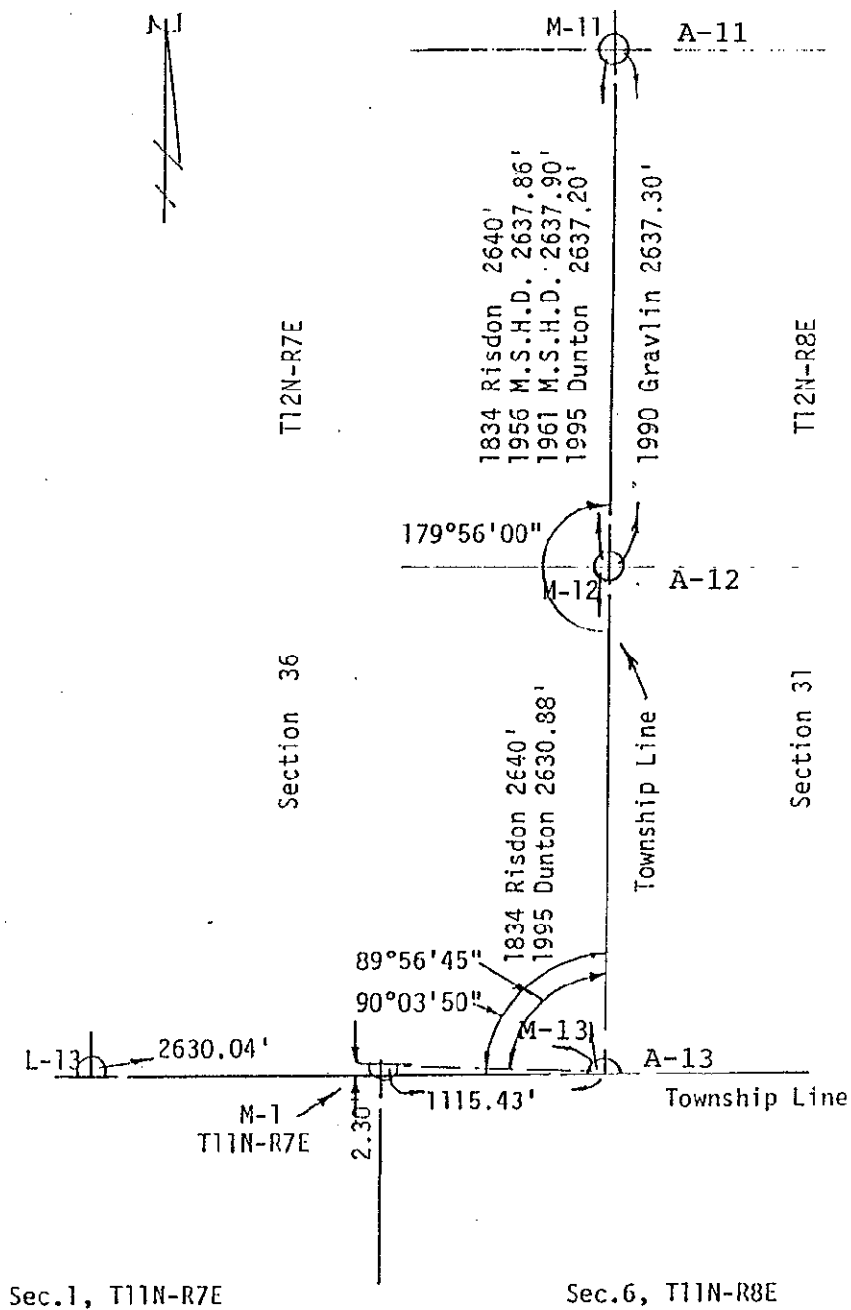


FORM APPROVED BY MICHIGAN STATE BOARD OF LAND SURVEYORS, JAN. 28, 1971
REVISED MAY 14, 1975
REVISED JAN., 1983

COPY

Section A continued:

Aug. 6, 1991 Survey by Earl E. Gravlin, L.S. #23510. Recorded in Liber 615 Page 695
Tuscola County Records. End. 1" pipe. N65°W 74.20' p. pole. East 45.88' p. pole. N50°E
46.32' end CMP.



COPY