

**SURVEY & REMONUMENTATION**

**COPY**

**FEB 08 2001**

**SECTION**

**2000 REMONUMENTATION PROGRAM  
LAND CORNER RECORDATION CERTIFICATE**  
Filing Requirement of Act 74,  
Mich. P.A. 1970

RECEIVED FOR RECORD  
LIBER NO. \_\_\_\_\_ PAGE NO. \_\_\_\_\_  
FILE NO. **#98 Juniata**

For corners in: JUNIATA TWP.

Tuscola Located In:  
(County)

Corner Code #

- 1. Public Land Survey      T 12N R 8E      **K-8**  
                                   T \_\_\_\_\_ R \_\_\_\_\_  
                                   T \_\_\_\_\_ R \_\_\_\_\_  
                                   T \_\_\_\_\_ R \_\_\_\_\_
- 2. Property Controlling      S \_\_\_\_\_ T \_\_\_\_\_ R  
     in Section                   S \_\_\_\_\_ T \_\_\_\_\_ R
- 3. Miscellaneous            S \_\_\_\_\_ T \_\_\_\_\_ R  
     Property in Sec.         S \_\_\_\_\_ T \_\_\_\_\_ R

4. Lot No. \_\_\_\_\_, Recorded Plat

5. Private Claims

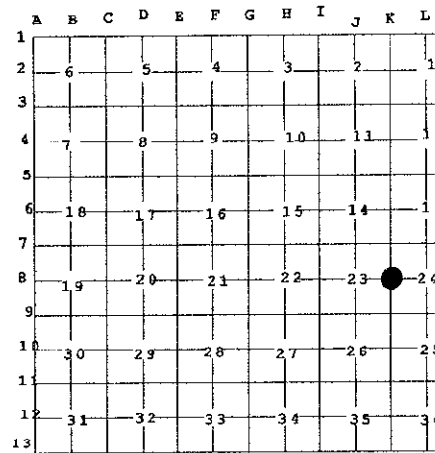
I, Kari M. Lohela, in a field survey on November 11, 2000 do hereby state that under requirements of P.A. 74, Michigan P.A. of 1970, the corner points mentioned in lines 1 and 2 above were in conformance with regulations and rules therefore as required in the current manual of survey instructions of the United States Department of the Interior, Bureau of Land Management or by a decree of a Court of Law and /or that the corner points mentioned in lines 3, 4 and 5 above were in conformance with the rules of the Michigan Board of Land Surveyors or by a Decree of a Court of Law; established, re-established, monumented, recovered, found as expressed below:

NOTE: Not more than 2 corners, all in the same town and range, may be recorded on this certificate.

00 DEC 19 PH 1:34

*Joseph M. Hagen*  
TUSCOLA COUNTY  
REGISTER OF DEEDS

Register of Deeds Stamp & File Number



- A. Description of original monument and accessories and/or subsequent restoration:
- 1822 G.L.O. NOTES, ORANGE RISDON, D.S., SET ¼ SEC. POST, HEMLOCK 20 N 80 E 18, HEMLOCK 12 S 86 W 29,
  - \* JULY 19, 1976, LCRC P.24 JUNIATA TWP., DAVID ROWE, PS 11192, FOUND 3" X 2" CEDAR STAKE 2' LONG, SET ½" RE-ROD WITH RLS 11192 CAP, S40°W 40.12' RLS 11192 TAG IN P.P., S40°E 33.84' RLS 11192 TAG IN 24" LOCUST TREE, N80°E 39.18' RLS 11192 TAG IN P.P., EAST 30.57' RLS 11192 IN COR. FENCE POST
  - \* JUNE 28, 1976, SURVEY L.462 PP.928-930, DAVID ROWE, PS 11192, NO MENTION OF OBJECT OR ACCESSORIES
  - JAN. 1, 1978, SURVEY L.487 PP.202-204, KENNETH DUNTON, PS 23503, FOUND ½" RE-ROD NEXT TO CEDAR STAKE, S40°W 40.12' RLS 11192 TAG IN P.P., S40°E 33.84' RLS 11192 TAG IN 24" LOCUST TREE, N80°E 39.18' RLS 11192 TAG IN P.P
  - APRIL 18, 1985, SURVEY L.578 P.19, KENNETH DUNTON, PS 23503, NO MENTION OF OBJECT OR ACCESSORIES
  - MAY 28, 1985, SURVEY L.550 P.775, LIONEL EMERY, PS 24593, FOUND ½" RE-ROD, S40°W 40.12' RLS 11192 TAG IN P.P., S40°E 33.84' RLS 11192 TAG IN 24" LOCUST TREE (NOT FOUND), N80°E 39.18' RLS 11192 TAG IN P.P.
  - DEC. 9, 1988, SURVEY L.595 P.69, KENNETH DUNTON, PS 23503, NO MENTION OF OBJECT OR ACCESSORIES
  - FEB. 11, 1991, SURVEY L.612 P.879, PAUL BROWN, PS 33134, FOUND ½" RE-ROD & CAP 2' DOWN, RAISED W/RE-ROD & CAP #33134, S45°W 41.17' SET PK IN NW FACE P.P., S75°E 65.47' SET PK IN SSW FACE GUY POLE, S40°E 62.45' SET SPIKE IN SW FACE 22" LOCUST TREE, N80°E 39.25' FOUND BENT NAIL & TAG #11192 - STRAIGHTENED NAIL & DROVE IN DEEPER
  - FEB. 25, 1991, LCRC P.53 JUNIATA TWP., PAUL BROWN, PS 33134, SAME OBJECT AND ACCESSORIES AS SURVEY L.612, P.879

# K-8 T12N-R8E

B. Description of corner evidence found and/or method applied in restoring or reestablishing corner:  
 FOUND 1/2" X 12" REBAR & CAP #33134 OVER CAPPED 1/2" X 18" REBAR EMBEDDED IN CEDAR STAKE.  
 RECOVERED 4 ACCESSORIES WHICH INDICATE THAT REBARs AND STAKE ARE IN SAME POSITION AS  
 SURVEYS AND LCRC'S CITED ABOVE.

ACCEPTED 1/2" REBARs AND CEDAR STAKE AS BEST AVAILABLE EVIDENCE OF ORIGINAL CORNER POSITION.

C. Description of monument for corner and accessories established to perpetuate locating the position of the corner:

REMOVED 1/2" REBARs AND SET 36" CONCRETE MONUMENT WITH STANDARD BRASS CAP STAMPED K-8, T12N-R8E, IN NEW MONUMENT BOX.

N75°E, 39.20' SET REMON. TAG & NAIL ABOVE FOUND NAIL & TAG IN W. FACE OF GUY POLE  
 S65°E, 65.45' SET REMON. TAG & NAIL ABOVE FOUND PK NAIL IN SW FACE OF GUY POLE  
 S40°E, 62.47' SET REMON. TAG & NAIL ABOVE FOUND SPIKE IN SW FACE OF 22" LOCUST  
 S45°W, 41.19' SET REMON. TAG & NAIL BELOW FOUND PK NAIL IN NW FACE OF UTILITY POLE  
 N45°W, 55.26' FACE OF STEEL ROAD SIGN POST

Signed by

*Kari M. Lohe*

Date 2/8/2001

**APPROVED BY TUSCOLA COUNTY  
 REMONUMENTATION PEER GROUP**

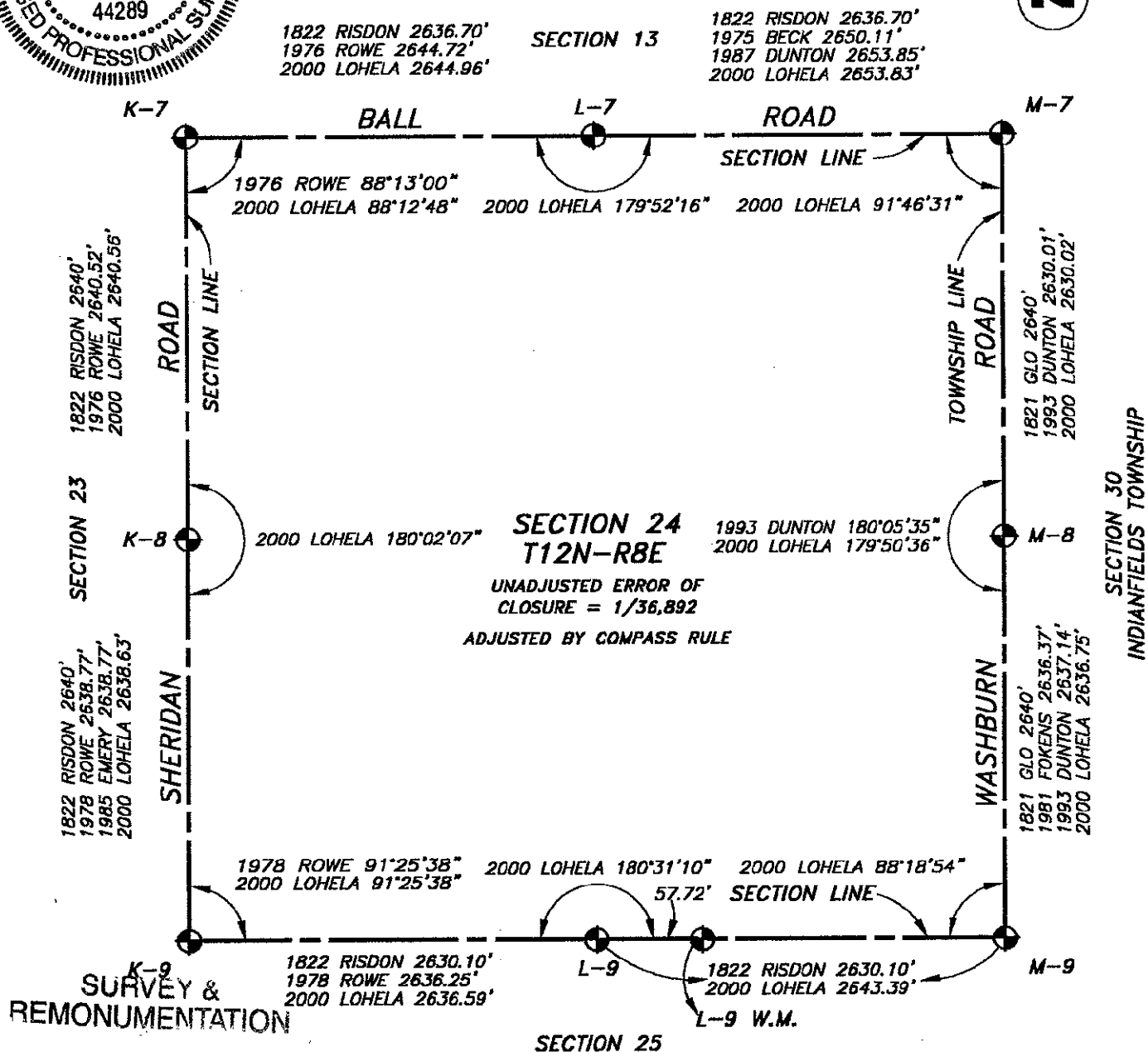
12/14/2000

1500  
 MWP  
 RAB

Surveyor's Michigan License No. 44289



FORM APPROVED BY MICHIGAN STATE BOARD OF PROFESSIONAL SURVEYORS, JAN. 28, 197;  
 REVISED MAY 14, 197;  
 REVISED JAN. 198;  
 REVISED OCT., 199;



**SURVEY &  
 REMONUMENTATION**

FEB 08 2001

SECTION