

SURVEY & REMONUMENTATION

COPY

FEB 08 2001

2000 REMONUMENTATION PROGRAM LAND CORNER RECORDATION CERTIFICATE Filing Requirement of Act 74, Mich. P.A. 1970

SECTION

For corners in: JUNIATA TWP.

Tuscola Located In: Corner Code #

- 1. Public Land Survey T 12N R 8E K-11
2. Property Controlling S T R
3. Miscellaneous S T R
4. Lot No. Recorded Plat
5. Private Claims

RECEIVED FOR RECORD LIBER NO. PAGE NO. FILE NO. #93 Juniata

00 DEC 19 PM 1:33

Signature and TUSCOLA COUNTY REGISTER OF DEEDS

Register of Deeds Stamp & File Number

I, Kari M. Lohela, in a field survey on November 11, 20 00 do hereby state that under requirements of P.A. 74, Michigan P.A. of 1970, the corner points mentioned in lines 1 and 2 above were in conformance with regulations and rules therefore as required in the current manual of survey instructions of the United States Department of the Interior, Bureau of Land Management or by a decree of a Court of Law and /or that the corner points mentioned in lines 3, 4 and 5 above were in conformance with the rules of the Michigan Board of Land Surveyors or by a Decree of a Court of Law; established, re-established, monumented, recovered, found as expressed below:

Grid table with columns A-L and rows 1-13. A black dot is present in cell J11.

NOTE: Not more than 2 corners, all in the same town and range, may be recorded on this certificate.

*1961, MSHD PROJECT 79041C, M-46 PLANS, SHEET 16, 1" IRON ROD, S 30 E 44.61' CHISELED "+" IN HDWL, N 22 E 39.75' PK & CAP IN HDWL, N 15 W 36.96' CHISELED "+" IN HDWL

A. Description of original monument and accessories and/or subsequent restoration:

1822 G.L.O. NOTES, ORANGE RISDON, D.S., SET CORNER TO SECTIONS 25-26-35, & 36, HEMLOCK 14 S 49 E 15, BEECH 10 N 19 W 55

* AUG. 26, 1895, EDWARD TESKEY, COUNTY SURVEYOR, REESTABLISHED CORNER K-11 BY SINGLE PROPORTION MEASUREMENT BETWEEN CORNERS K-13 AND K-9; RECOVERED ONE APPARENT BEARING TREE; SET STONE & CROCKERY AT ESTABLISHED CORNER

JULY 27, 1976, SURVEY L.485 PP.419-420, KENNETH DUNTON, PS 23503, FOUND 5/8" IRON, N20°W 47.05' W. END 24" CONC. CULV., N20°E 48.33' E. END 24" CONC. CULV., SOUTH 1.49' CENTERLINE HIGHWAY M-46

JULY 27, 1976, SURVEY L.476 PP.805-806, DAVID ROWE, PS 11192, SAME OBJECT AND ACCESSORIES AS SURVEY L.485, PP.419-420

AUG. 10 1976, SURVEY L.463 PP.611-612, JAN FOKENS, PS 21567, SAME OBJECT AND ACCESSORIES AS SURVEY L.485, PP.419-420

JUNE 23, 1977, LCRC P.30 JUNIATA TWP., KENNETH DUNTON, PS 23503, SAME OBJECT AND ACCESSORIES AS SURVEY L.485 PP.419-420

FEB. 22, 1982, SURVEY L.523 P.739, KENNETH DUNTON, PS 23503, SAME OBJECT AND ACCESSORIES AS SURVEY L.485, PP.419-420

AUG. 17, 1984, SURVEY L.545 PP.1091-1092, WILLIAM WINIARSKI, PS 23857, SAME OBJECT AND ACCESSORIES AS SURVEY L.485, PP.419-420

SEPT. 17, 1985, SURVEY L.555 PP.1268-1269, JACK OWENS, PS 20709, SAME OBJECT AND ACCESSORIES AS SURVEY L.485, PP.419-420

OCT. 10, 1991, SURVEY L.619 PP.1036-1037, JONATHAN FIELD, P.S. 37276, NO MENTION OF OBJECT OR ACCESSORIES

K-11 T12N-R8E

B. Description of corner evidence found and/or method applied in restoring or reestablishing corner:
 FOUND MONUMENT BOX FILLED WITH CONCRETE; UNABLE TO FIND OBJECT INSIDE.

RECOVERED 3 ACCESSORIES FROM SURVEYS CITED ABOVE. RESECTED POSITION OF OBJECT FROM RECOVERED ACCESSORIES. ACCEPTED RESECTED POINT AS BEST AVAILABLE EVIDENCE OF ORIGINAL CORNER POSITION.

C. Description of monument for corner and accessories established to perpetuate locating the position of the corner:

PLACED STANDARD BRASS CAP STAMPED K-11, T12N-R8E, ON 5/8" BAR. ENCASED CAP AND BAR IN CONCRETE IN EXISTING MONUMENT BOX.

N 20° E, 48.18' SET CHISELED "X" IN CROWN AT E. END OF 24" CONC. CULVERT

S 10° E, 12.39' "+" @ STA. 1179+00 ON S. EDGE OF CONC. PAVEMENT

SOUTH, 1.49' CENTERLINE JOINT IN ORIGINAL CONC. PAVEMENT

S 65° W, 98.40' SET CHISELED "X" TOP OF CONC. HEADWALL

N 20° W, 46.93' SET CHISELED "X" IN CROWN AT W. END OF 24" CONC. CULVERT

Signed by

Kari M. Loehla

Date 12/18/00

**APPROVED BY TUSCOLA COUNTY
 REMONUMENTATION PEER GROUP**

*ADD
 MWP
 RLB*

Surveyor's Michigan License No. ~~44289~~

12/14/2000

FORM APPROVED BY MICHIGAN STATE BOARD OF PROFESSIONAL SURVEYORS, JAN. 28, 1971
 REVISED MAY 14, 1975
 REVISED JAN., 1983
 REVISED OCT., 1995

NOTE: 1995 MEASUREMENTS BY FIELD ARE TO CORNER L-1, T11N, R8E;
 MONUMENT WAS CORRECTLY SET AT POSITION L-13, T12N, R8E.

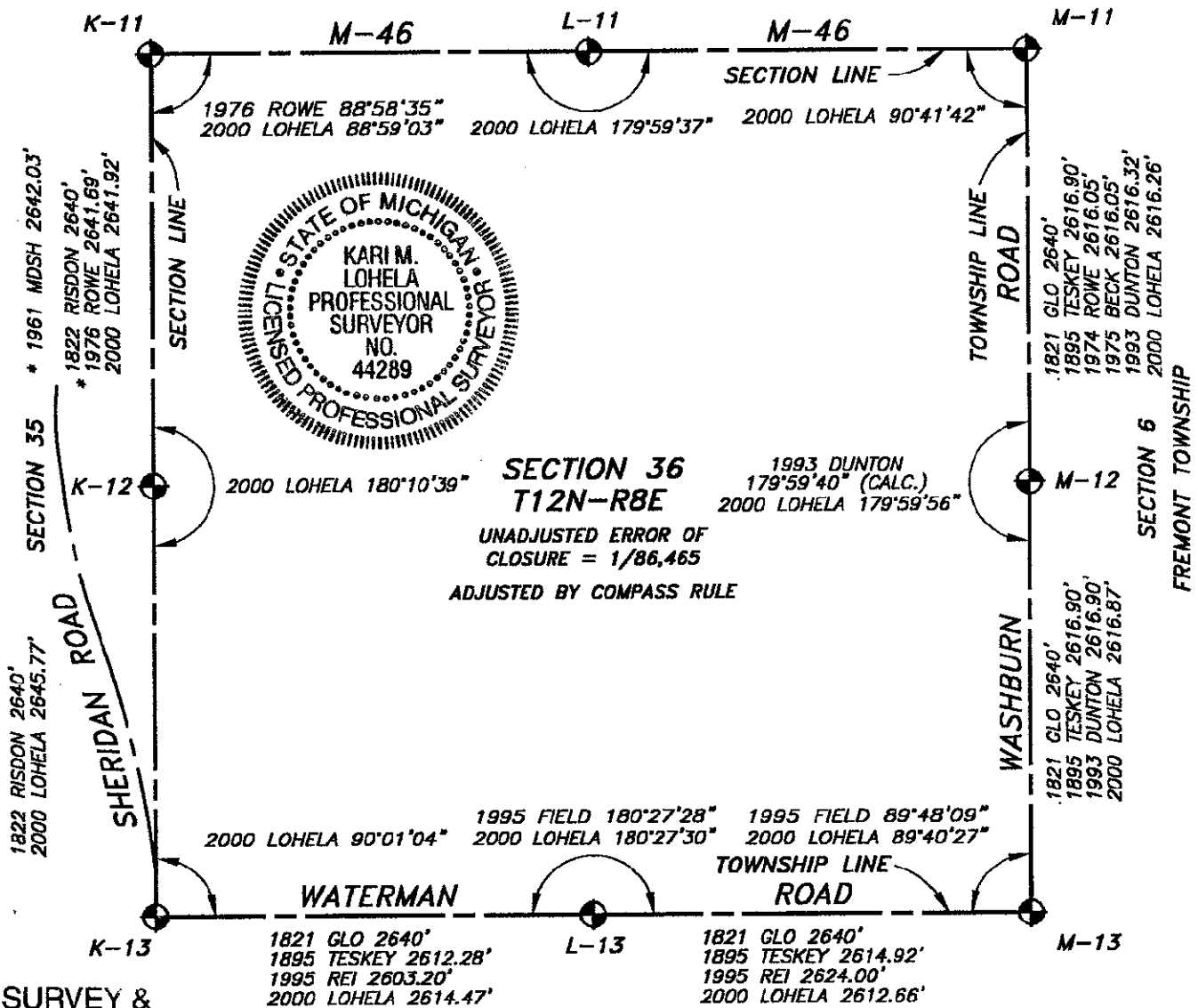
MARCH 2000, CONFIRMED BY DUNTON SURVEY FOR
 TUSCOLA COUNTY ROAD COMMISSION

* 1961 MDSH 2622.50' (CALC.)

* 1822 RISDON 2623.50'
 * 1976 ROWE 2622.73'
 * 1982 DUNTON 2622.70'
 * 2000 LOHELA 2622.37'

SECTION 25

* 1961 MDSH 2624.50' (CALC.)
 * 1822 RISDON 2623.50'
 * 2000 LOHELA 2627.15'



**SECTION 36
 T12N-R8E**
 UNADJUSTED ERROR OF
 CLOSURE = 1/86,465
 ADJUSTED BY COMPASS RULE

**SURVEY &
 REMONUMENTATION**

FEB 08 2001

SECTION 1
 VASSAR TOWNSHIP

SECTION