

**SURVEY &
REMONUMENTATION**

COPY

FEB 08 2001

**2000 REMONUMENTATION PROGRAM
LAND CORNER RECORDATION CERTIFICATE**
Filing Requirement of Act 74,
Mich. P.A. 1970

SECTION

For corners in: JUNIATA TWP.

Tuscola Located In:
(County)

Corner Code #

1. Public Land Survey T 12N R 8E L-9
 T _____ R _____
 T _____ R _____
 T _____ R _____
2. Property Controlling S _____ T _____ R
 in Section S _____ T _____ R
3. Miscellaneous S _____ T _____ R
 Property in Sec. S _____ T _____ R
4. Lot No. _____, Recorded Plat
5. Private Claims

RECEIVED FOR RECORD
LIBER NO. _____ PAGE NO. _____
FILE NO. #97 Juniata

00 DEC 19 PM 1:34

George M. Schen

TUSCOLA COUNTY
REGISTER OF DEEDS

Register of Deeds Stamp & File
Number

I, Kari M. Lohela, in a field survey on November 11, 2000 do hereby state that under requirements of P.A. 74, Michigan P.A. of 1970, the corner points mentioned in lines 1 and 2 above were in conformance with regulations and rules therefore as required in the current manual of survey instructions of the United States Department of the Interior, Bureau of Land Management or by a decree of a Court of Law and /or that the corner points mentioned in lines 3, 4 and 5 above were in conformance with the rules of the Michigan Board of Land Surveyors or by a Decree of a Court of Law; established, re-established, monumented, recovered, found as expressed below:

NOTE: Not more than 2 corners, all in the same town and range, may be recorded on this certificate.

	A	B	C	D	E	F	G	H	I	J	K	L
1												
2	6			5		4		3		2		1
3												
4	7			8		9		10		11		1
5												
6	18			17		16		15		14		1
7												
8	19			20		21		22		23		24
9												
10	30			29		28		27		26		21
11												
12	31			32		33		34		35		3
13												

A. Description of original monument and accessories and/or subsequent restoration:

1822 G.L.O. NOTES, ORANGE RISDON, D.S., SET ¼ SEC. POST, BEECH 10 S 74 E 66, ELM 24 N 73 E 32

JUNE 28, 1976, SURVEY L.462 PP.928-930, DAVID ROWE, PS 11192, NO MENTION OF OBJECT OR ACCESSORIES

JULY 19, 1976, LCRC P.24 JUNIATA TWP., DAVID ROWE, PS 11192, FOUND 18" POINTED STONE, NOTCH ON SOUTH SIDE, N20°W 33.03' DRILLED HOLE TOP OF 3' X 3' STONE, N60°E 39.80' RLS 11192 TAG IN 2" ASH, S70°E 53.55' RLS 11192 IN 8" ASH, S65°E 44.0' CENTER OF 36" BEECH

JAN. 18, 1978, SURVEY L.487 PP.202-204, KENNETH DUNTON, PS 23503, SAME OBJECT AND ACCESSORIES AS LCRC P.24 JUNIATA TWP.

B. Description of corner evidence found and/or method applied in restoring or reestablishing corner:

FOUND 18" POINTED STONE WITH NOTCH ON SOUTH SIDE, BURIED 8" DEEP ON EAST EDGE OF CASS RIVER CHANNEL. RECOVERED 3 ACCESSORIES WHICH INDICATE THAT STONE IS IN SAME POSITION AS SURVEYS AND LCRC CITED ABOVE.

ACCEPTED POINTED STONE AS BEST AVAILABLE EVIDENCE OF ORIGINAL CORNER POSITION.

C. Description of monument for corner and accessories established to perpetuate locating the position of the corner:

ACCESSORIES TO CORNER L-9, T12N-R8E.

N55°E, 39.57' SET REMON. TAG & NAIL IN W. FACE OF 12" ASH

EAST, 44.94' SET REMON. TAG & NAIL IN S. FACE OF 8" ASH

S55°E, 50.57' SET REMON. TAG & NAIL ABOVE FOUND NAIL & TAG IN W. FACE OF 4" ASH

S20°E, 68.14' SET REMON. TAG & NAIL IN W. FACE OF 12" ASH

N20°W, 33.03' FOUND DRILL HOLE IN 3'X5' ROCK IN CASS RIVER

L-9 T12N-R8E

ALSO SET 36" CONCRETE MONUMENT WITH STANDARD BRASS CAP STAMPED L-9 WM (WITNESS MONUMENT), T12N-R8E, ON SECTION LINE BETWEEN CORNERS L-9 AND M-9, 57.72' EAST OF CORNER L-9. ACCESSORIES TO CORNER L-9 WM (WITNESS MONUMENT), T12N-R8E.
 N35°E, 9.92' SET REMON. TAG & NAIL IN W. FACE OF TWIN 8" ASH
 EAST, 19.96' SET REMON. TAG & NAIL IN SW FACE OF 8" ASH
 S30°W, 28.36' SET REMON. TAG & NAIL IN NW FACE OF 4" ASH
 WEST, 12.22' SET REMON. TAG & NAIL IN NE FACE OF 8" ASH
 WEST, 57.72' CORNER L-9, T12N-R8E

Signed by

Kari M. Loehla

Date 12/10/00

APPROVED BY TUSCOLA COUNTY
 REMONUMENTATION PEER GROUP

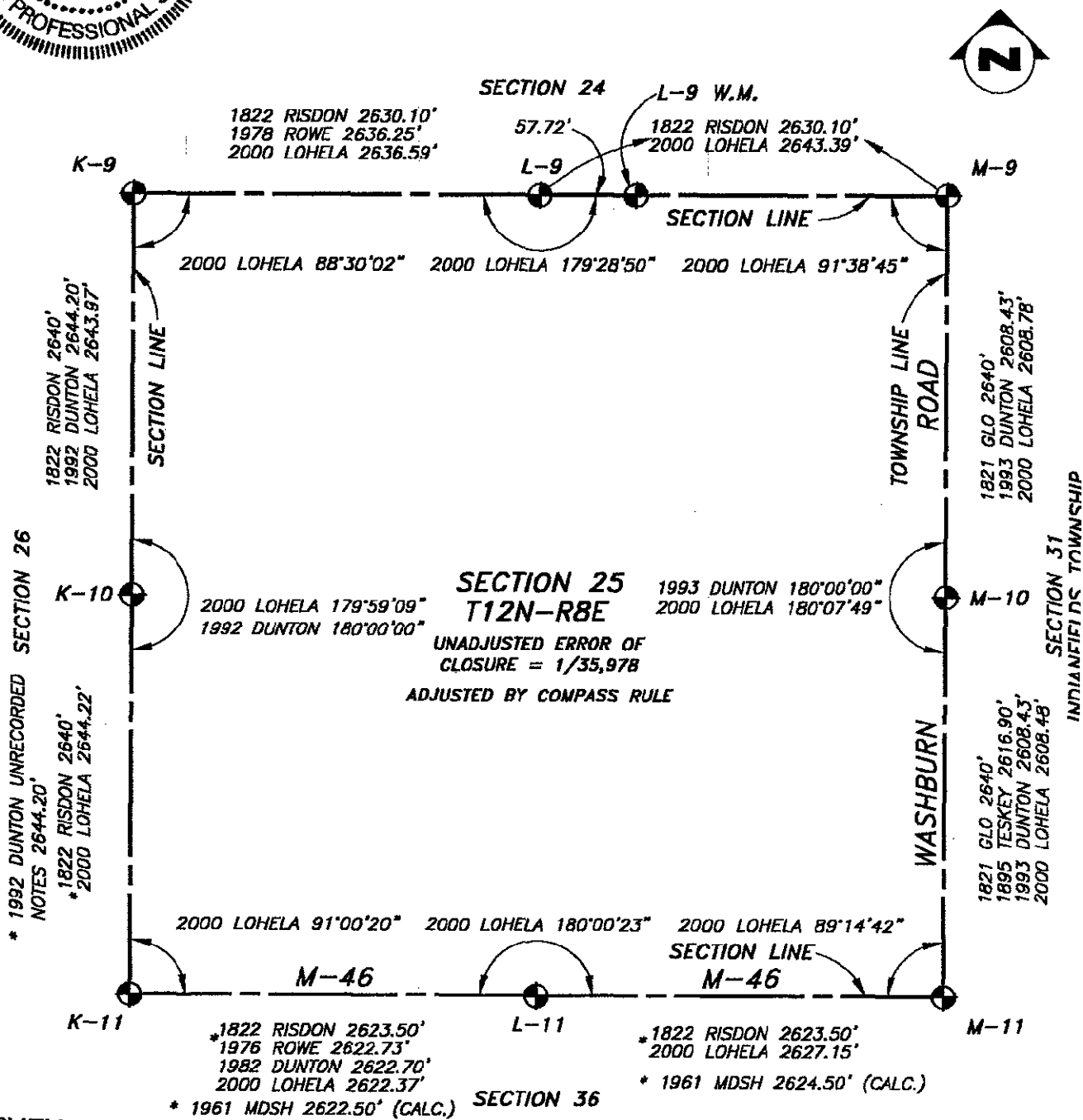
ADD
MWP
RLB

12/14/2000

Surveyor's Michigan License No. 44289



FORM APPROVED BY MICHIGAN STATE BOARD OF PROFESSIONAL SURVEYORS, JAN. 28, 197
 REVISED MAY 14, 197
 REVISED JAN., 198
 REVISED OCT., 1991



SURVEY &
 REMONUMENTATION

FEB 08 2001

SECTION