

SURVEY & REMONUMENTATION

COPY

FEB 08 2001

2000 REMONUMENTATION PROGRAM LAND CORNER RECORDATION CERTIFICATE Filing Requirement of Act 74, Mich. P.A. 1970

SECTION

For corners in: JUNIATA TWP.

RECEIVED FOR RECORD LIBER NO. PAGE NO. FILE NO. #94 Juniata

00 DEC 19 PM 1:33

Handwritten signature

TUSCOLA COUNTY REGISTER OF DEEDS

Register of Deeds Stamp & File Number

- Tuscola Located In: Corner Code # L-11
1. Public Land Survey T 12N R 8E
2. Property Controlling S T R
3. Miscellaneous S T R
4. Lot No. Recorded Plat
5. Private Claims

I, Kari M. Lohela, in a field survey on November 11, 20 00 do hereby state that under requirements of P.A. 74, Michigan P.A. of 1970, the corner points mentioned in lines 1 and 2 above were in conformance with regulations and rules therefore as required in the current manual of survey instructions of the United States Department of the Interior...

NOTE: Not more than 2 corners, all in the same town and range, may be recorded on this certificate.

*1961, MSHD PROJECT 79041C, M-46 PLANS, SHEET 15, 3/4" PIPE, N 51 W 66.98' 12" ELM, S 16 W 55.60' NE COR. HDWL, S 16 E 51.62' NW COR. HDWL.

Grid table with columns A-L and rows 1-13. A dot is present in cell J11.

A. Description of original monument and accessories and/or subsequent restoration: 1822 G.L.O. NOTES, ORANGE RISDON, D.S., SET 1/4 SEC. POST, HEMLOCK 18 N 67 E 13, HEMLOCK 12 S 70 W 12 AUG. 26, 1895, EDWARD TESKEY, COUNTY SURVEYOR, PREVIOUSLY ESTABLISHED BY MILLER FROM B.T., STONE, PINE STUMP 40 N 29 E 63 1/2 (SECTION A. CONT. ON BACK OF FORM)

B. Description of corner evidence found and/or method applied in restoring or reestablishing corner: FOUND 1" BAR ON OCCUPIED LINE TO NORTH AND SOUTH.

ACCEPTED 1" BAR AS BEST AVAILABLE EVIDENCE OF ORIGINAL CORNER POSITION.

C. Description of monument for corner and accessories established to perpetuate locating the position of the corner:

REMOVED 1" BAR AND SET 36" CONCRETE MONUMENT WITH STANDARD BRASS CAP STAMPED L-11, T12N-R8E.

N30°E, 66.22' SET REMON. TAG & NAIL BELOW FOUND NAIL & TAG IN SW FACE OF 10" PINE S80°E, 85.55' "+" @ STA 1206+00 ON SOUTH EDGE OF CONC. PAVEMENT SOUTH, 18.28' CENTERLINE JOINT OF CONC. PAVEMENT S40°W, 35.20' "+" @ STA 1205+00 ON SOUTH EDGE OF CONC. PAVEMENT N40°W, 77.20' SET REMON. TAG & NAIL IN E. FACE OF 12" PINE

Signed by

Handwritten signature of Kari M. Lohela

Date 12/14/00

APPROVED BY TUSCOLA COUNTY REMONUMENTATION PEER GROUP

12/14/2000

Handwritten initials MWP, RLB

Surveyor's Michigan License No. 44289



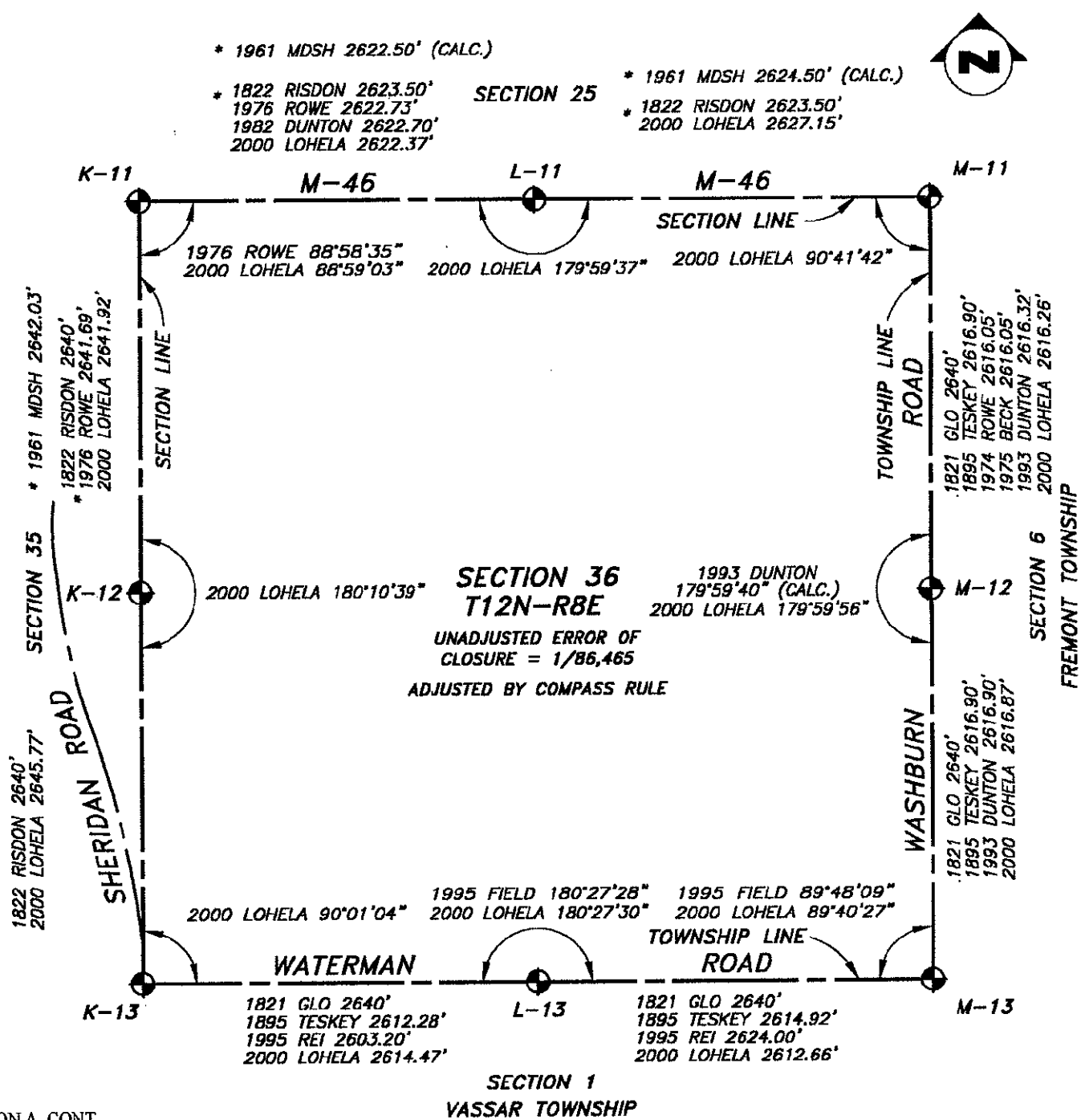
SURVEY &
REMONUMENTATION

L-11 T12N-R8E

FEB 08 2001

SECTION

NOTE: 1995 MEASUREMENTS BY FIELD ARE TO CORNER L-11, T12N, R8E;
MONUMENT WAS CORRECTLY SET AT POSITION L-13, T12N, R8E.
MARCH 2000, CONFIRMED BY DUNTON SURVEY FOR
TUSCOLA COUNTY ROAD COMMISSION



SECTION A. CONT.

JULY 27, 1976, SURVEY L. 485 P. 419-421, KENNETH D. DUNTON, PS 23503, T IRON OVER 1" BAR, SOUTH 18.53' TO CENTERLINE CONC. PAVEMENT (M-46), N53°W 103.06' RLS 11192 TAG IN TP, N33°E 66.56' RLS 11192 TAG IN 3" PINE

JULY 27, 1976, SURVEY L. 479 P.805-806, DAVID T. ROWE, PS 11192, T IRON OVER 1" BAR, SOUTH 18.53' TO CENTERLINE CONC. PAVEMENT (M-46), N53°W 103.06' RLS 11192 TAG IN TP, N33°E 66.56' RLS 11192 TAG IN 3" PINE

MAY 31, 1977, SURVEY L.475 P.415-417, KENNETH D. DUNTON, PS 23503, T IRON OVER 1" BAR, SOUTH 18.53' TO CENTERLINE CONC. PAVEMENT (M-46), N53°W 103.06' RLS 11192 TAG IN TP, N33°E 66.56' RLS 11192 TAG IN 3" PINE, N28°W 72.53' TO RLS 11192 TAG IN 3" PINE

FEB 22, 1982, SURVEY L.523 P. 739, KENNETH D. DUNTON, PS 23503, NO MENTION OF OBJECT FOUND, SOUTH 18.5' TO CENTERLINE HWY., N53°W 103' RLS 11192 TAG IN TP, N33°E 66.6'

OCT 10, 1991, SURVEY L.619 P.1036-1037, JONATHAN M. FIELD, PS 37276, FOUND T IRON, S51°W 127.62' SET PK W/TAG #20709 IN SE FACE CUT OFF T. POLE, N31°W 72.54' END 40D NAIL W/FLAG IN SW FACE 8" PINE, NORTH 8.60' W. EDGE OF W. LEG SIGN POST, N28°E 66.50' SET 60D NAIL W/TAG #20709 IN NW FACE 10" PINE, SOUTH 18.53' C/L JOINT IN CONC. PVM T M-46