

MAY 15 1997

COMMISSION

1996 REMONUMENTATION PROGRAM
LAND CORNER RECORDATION CERTIFICATE
Filing Requirement of Act 74, Mich. P.A. 1970

For corners in Juniata Township

TUSCOLA
(County)

Located In:

Corner Code #/

- 1. Public Land Survey T 12N R 8E M-1 ✓
T _____ R _____
T 13N R 8E M-13
T _____ R _____
- 2. Property Controlling S _____ T _____ R _____
in Section S _____ T _____ R _____
- 3. Miscellaneous S _____ T _____ R _____
Property in Sec. S _____ T _____ R _____

- 4. Lot No. _____, Recorded Plat _____
- 5. Private Claims _____

TUSCOLA COUNTY
REGISTERED SURVEYORS

RECEIVED FOR RECORD
LIBER NO. _____ PAGE NO. _____
FILE NO. #00 Juniata
95 OCT 31 AM 10:40

Register of Deeds Stamp & File Number

I, Kenneth D. Dunton in a field survey on August 8, 19 93, do hereby certify that under requirements of P.A. 74, Michigan P.A. of 1970, the corner points mentioned in lines 1 and 2 above were in conformance with regulations and rules therefore as required in the current manual of survey instructions of the United States Department of the Interior, Bureau of Land Management or by a decree of a Court of Law and/or that the corner points mentioned in lines 3, 4 and 5 above were in conformance with the rules of the Michigan Board of Land Surveyors or by a Decree of a Court of Law; established, re-established, monumented, re-monumented, recovered, found as expressed below:

NOTE: Not more than 4 corners, all in the same town and range, may be recorded on this certificate.

	A	B	C	D	E	F	G	H	I	J	K	L	M
2	6		5		4		3		2		1		
3													
4	7		8		9		10		11		12		
5													
6	18		17		16		15		14		13		
7													
8	19		20		21		22		23		24		
9													
10	30		29		28		27		26		25		
11													
12	31		32		33		34		35		36		
13													

A. Description of original monument and accessories and/or subsequent restoration:

G.L.O. 1821 Joseph Wampler, D.S. Set post cor. Towns 12 & 13N-R8E Beech 16" S2 1/2°W 13.86' Beech 14" N34°E 19.14'	Feb. 16, 1859 D. F. Cranston, County Surveyor Survey of Section 36, T13N-R8E No mention of object found or set. No accessories given. Cranston meas. M-13 to M-12 of 2619.54'
--	--

Note: Section A continued on back of form.

B. Description of corner evidence found and/or method applied in restoring or reestablishing corner:

Found and accepted 1/2" rod & cap #11192 per accessories on Act 74 forms of record.

C. Description of monument for corner and accessories established to perpetuate locating the position of the corner:

Removed 1/2" rod & cap and placed standard monument with 2" brass cap stamped corner M-13, T13N-R8E and corner M-1, T12N-R8E. Set 10-23-93.
N00°02'30"E 99.35' set 1/2" re-rod on township line.
S89°57'30"E 60.00' set 1/2" re-rod on East ditch bank.
S03°07'E 78.44' found 5/8" re-rod (bent).
S00°03'W 78.45' found 1/2" re-rod & cap # 20709.
S59°19'W 32.66' set T.C. Remon. tag & spike over P. K. nail in East face of pole.

Note: This corner is common with M-13, T13N-R8E.

Signed by [Signature] Date 10-23-96
Surveyor's Michigan License No. 23503

APPROVED
10-23-96



COPY

Continued from Section A on front of this form:

April 11, 1979 Act 74, Fairgrove Township Page 40 by James L. Quist, R.L.S. #25868
Set 1/2" re-rod #11192 by single proportion method between corner M-12, T13N-R8E & corner M-2, T12N-R8E.

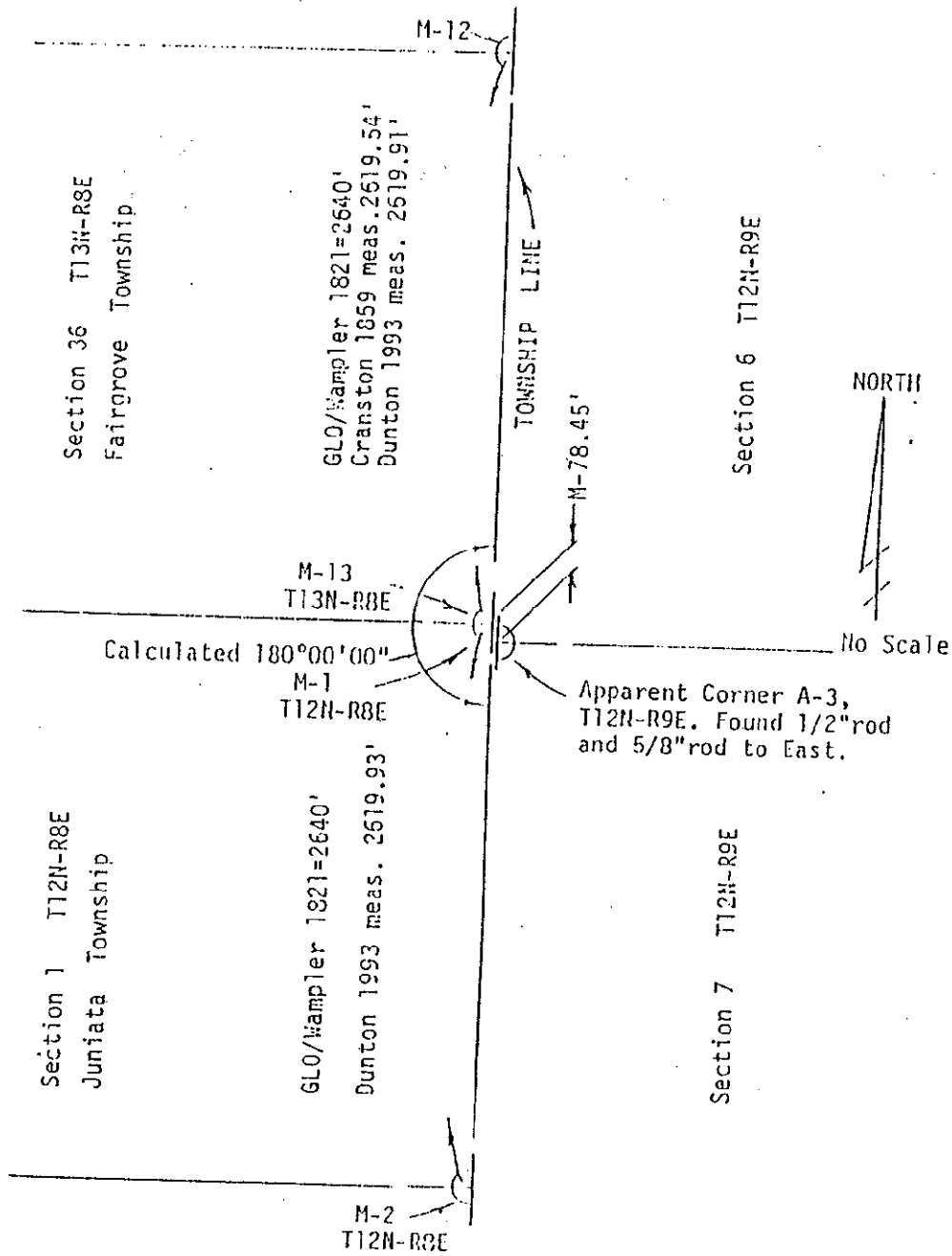
S45°W 32.70' R.L.S. tag #11192 in t.p.

S35°W 29.25' center rd. sign post.

S30°E 44.95' top center of 36" CMP.

South 78.43' 5/8" rod @ SW cor. Sec. 6, T12N-R9E.

April 11, 1979 Act 74, Juniata Township, Page 41 by James L. Quist, R.L.S. #25868
Information same as Act 74, T13N-R8E, Page 40.



COPY