

SURVEY & REMONUMENTATION

MAR 02 1999

SECTION

1998 REMONUMENTATION PROGRAM
LAND CORNER RECORDATION CERTIFICATE
 Filing Requirement of Act 74, Mich. P.A. 1970

RECEIVED FOR RECORD
 LIBER NO. _____ PAGE NO. _____
 FILE NO. #101
 INDIANFIELDS TWP
 98 NOV 12 PM 4:13

Gary M. Dunton
 TUSCOLA COUNTY
 REGISTER OF DEEDS

Register of Deeds Stamp & File Number

For corners in Indianfields Township

Tuscola (County)	Located In:	Corner Code #
1. Public Land Survey	T 12N R 9E	M-4
	T _____ R _____	_____
	T _____ R _____	_____
	T _____ R _____	_____
2. Property Controlling in Section	S _____ T _____ R _____	_____
	S _____ T _____ R _____	_____
3. Miscellaneous Property in Sec.	S _____ T _____ R _____	_____
	S _____ T _____ R _____	_____

4. Lot No. _____, Recorded Plat _____
 5. Private Claims _____

I, Kenneth D. Dunton in a field survey on May 31, 19 98 do hereby state that under requirements of P.A. 74, Michigan P.A. of 1970, the corner points mentioned in lines 1 and 2 above were in conformance with regulations and rules therefore as required in the current manual of survey instructions of the United States Department of the Interior, Bureau of Land Management or by a decree of a Court of Law and /or that the corner points mentioned in lines 3, 4 and 5 above were in conformance with the rules of the Michigan Board of Land Surveyors or by a Decree of a Court of Law; established, re-established, monumented, recovered, found as expressed below:

NOTE: Not more than 2 corners, all in the same town and range, may be recorded on this certificate.

	A	B	C	D	E	F	G	H	I	J	K	L	M
1													
2	6		5		4		3		2		1		
3													
4	7		8		9		10		11		12		
5													
6	18		17		16		15		14		13		
7													
8	19		20		21		22		23		24		
9													
10	30		29		28		27		26		25		
11													
12	31		32		33		34		35		36		
13													

A. Description of original monument and accessories and/or subsequent restoration:

G.L.O. Notes Nov. 17, 1834 by H. Parke, D.S., set 1/4 section post, Hemlock 12" S42°W 43 links, Hemlock 9" N43°W 46 1/2 links. *Nov. 8, 1988 Surveys L-589, P-949, 950, 1085 & 1086 by Russell L. Brown, P.S. #24588, found 1" pipe, North 5.78' spike in 5" Birch, West 15.83' spike in 8" Elm, S45°E 14.43' spike in 8" Elm.
 *March 9, 1988 survey L-587, P-76 through 79 by Kenneth D. Dunton, P.S. #23503, set 1" pipe at base of existing corner post, North 5.78' nail in 5" Birch, West 15.83' nail in 8" Elm, S45°E 14.43' nail in 8" Elm.

B. Description of corner evidence found and/or method applied in restoring or reestablishing corner:

Found 1" iron pipe & accepted as the best evidence of the original corner.

Corner M-4, T12N-R9E is common with Corner A-4, T12N-R10E.

C. Description of monument for corner and accessories established to perpetuate locating the position of the corner:

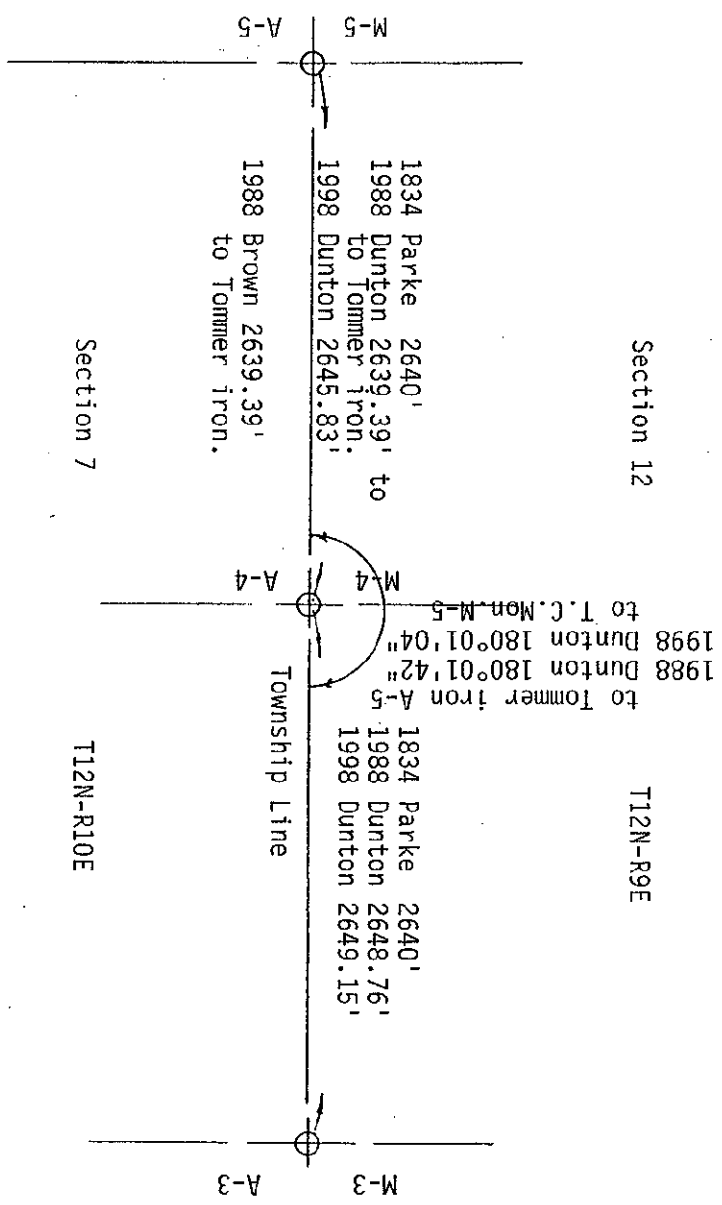
Removed 1" pipe & perpetuated with standard monument stamped M-4, T12N-R9E
 North 18.64' set remon. tag & spike in West face 4" Basswood.
 N80°E 10.75' set remon. tag & spike in NW face 4" Apple.
 S45°E 14.41' set remon. tag & spike in NE face 10" Elm.
 South 30.45' set remon. tag & spike in West face twin 6" Basswood.
 West 15.88' set remon. tag & spike in South face 9" Elm stump.

Signed by *Kenneth D. Dunton*
 Surveyor's Michigan License No. 23503

Date 11-2-98



APPROVED
11-2-98
J.M.I.
R.B.B.
M.E.



SURVEY &
REMONUMENTATION

MAR 02 1999

SECTION