

SURVEY & REMONUMENTATION

MAR 02 1999

SECTION

1998 REMONUMENTATION PROGRAM
LAND CORNER RECORDATION CERTIFICATE
 Filing Requirement of Act 74, Mich. P.A. 1970

For corners in Indianfields Township

Tuscola (County)	Located in:	Corner Code #
1. Public Land Survey	T <u>12N</u> R <u>9E</u>	<u>M-9</u>
	T _____ R _____	_____
	T _____ R _____	_____
	T _____ R _____	_____
2. Property Controlling in Section	S _____ T _____ R _____	_____
	S _____ T _____ R _____	_____
3. Miscellaneous Property in Sec.	S _____ T _____ R _____	_____
	S _____ T _____ R _____	_____

RECEIVED FOR RECORD
 LIBER NO. _____ PAGE NO. _____
 FILE NO. #90
 INDIANFIELDS TWP
 98 NOV 12 PM 4:13

Garry Midglen
 TUSCOLA COUNTY
 REGISTER OF DEEDS

Register of Deeds Stamp & File Number

4. Lot No. _____, Recorded Plat _____
 5. Private Claims _____

I, Kenneth D. Dunton, in a field survey on May 29, 1998 do hereby state that under requirements of P.A. 74, Michigan P.A. of 1970, the corner points mentioned in lines 1 and 2 above were in conformance with regulations and rules therefore as required in the current manual of survey instructions of the United States Department of the Interior, Bureau of Land Management or by a decree of a Court of Law and for that the corner points mentioned in lines 3, 4 and 5 above were in conformance with the rules of the Michigan Board of Land Surveyors or by a Decree of a Court of Law; established, re-established, monumented, recovered, found as expressed below:

NOTE: Not more than 2 corners, all in the same town and range, may be recorded on this certificate.

	A	B	C	D	E	F	G	H	I	J	K	L	M
1													
2		6		5		4		3		2		1	
3													
4		7		8		9		10		11		12	
5													
6		18		17		16		15		14		13	
7													
8		19		20		21		22		23		24	
9													
10		30		29		28		27		26		25	
11													
12		31		32		33		34		35		36	
13													

A. Description of original monument and accessories and/or subsequent restoration:

G.L.O. notes Nov. 17, 1834 by H. Parke, D.S. Set post corner Sections 24 & 25, Cedar 9" S25°W 21 links, B. Ash 6" N 1 1/2°W 4 links.

B. Description of corner evidence found and/or method applied in restoring or reestablishing corner:

Found 1 1/4" iron pipe 4" deep & accepted as the best evidence of the original corner. Corner M-9, T12N-R9E is common with Corner A-9, T12N-R10E.

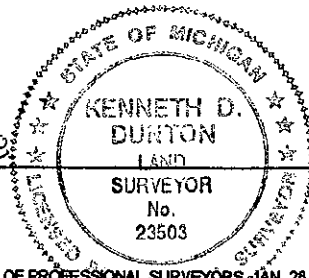
C. Description of monument for corner and accessories established to perpetuate locating the position of the corner:

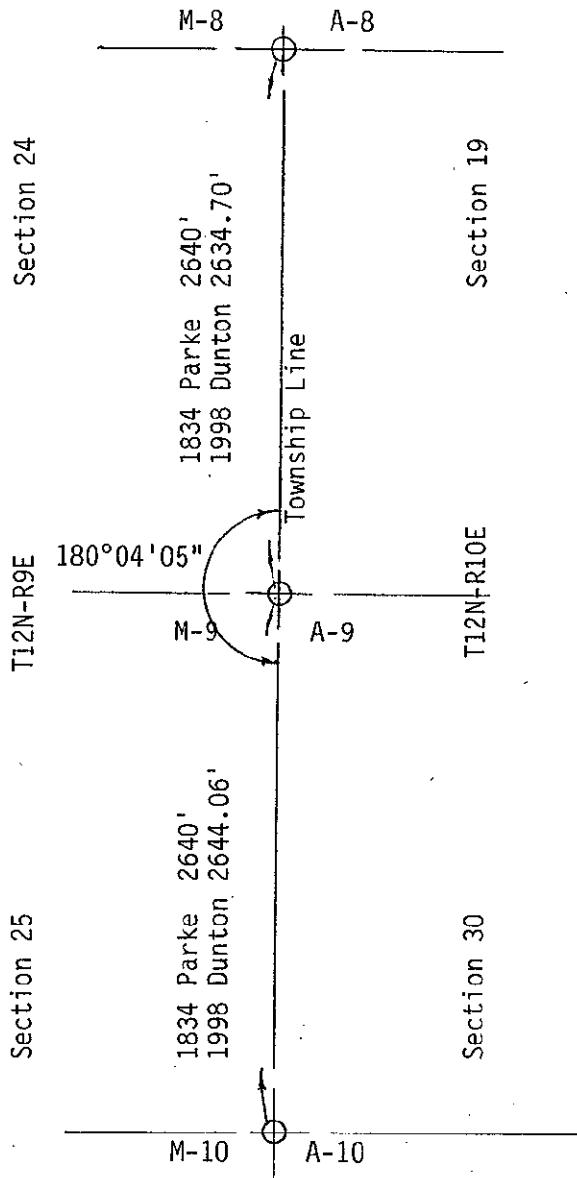
perpetuated with
 Removed pipe & Δ standard monument stamped M-9, T12N-R9E.
 Placed carsonite post at monument.
 N30°W 4.96' set remon. tag & spike in SW face 3" Maple.
 N60°W 17.56' set remon. tag & spike in SW face 2" Red Oak.
 S85°W 50.38' set remon. tag & spike in South face 15" White Pine.
 S15°E 45.42' set remon. tag & spike in East face 8" Spruce.
 N70°E 1.81' set remon. tag & spike in South face 10" Poplar.
 West 25'± centerline of trail. South 10'± centerline of trail.
 S60°E 80'± edge of dredge cut.

Signed by *Kenneth D. Dunton*
 Surveyor's Michigan License No. 23503

Date 11-2-98

APPROVED
11-2-98
[Signature]





SURVEY &
REMONUMENTATION

MAR 02 1999

SECTION