

SURVEY & REMONUMENTATION

MAR 02 1999

RECEIVED FOR RECORD

LIBER NO. _____ PAGE NO. _____

FILE NO. #95

INDIAN FIELDS TWP
98 NOV 12 PM 4:13

SECTION

1998 REMONUMENTATION PROGRAM
LAND CORNER RECORDATION CERTIFICATE
Filing Requirement of Act 74, Mich. P.A. 1970

For corners in Indianfields Township

Tuscola (County)	Located In:	Corner Code #
1. Public Land Survey	T <u>12</u> N R <u>9</u> E	M-10
	T _____ R _____	_____
	T _____ R _____	_____
	T _____ R _____	_____
2. Property Controlling in Section	S _____ T _____ R _____	_____
	S _____ T _____ R _____	_____
3. Miscellaneous Property in Sec.	S _____ T _____ R _____	_____
	S _____ T _____ R _____	_____

Aring M. Duntun
TUSCOLA COUNTY
REGISTER OF DEEDS

Register of Deeds Stamp & File Number

4. Lot No. _____, Recorded Plat _____
5. Private Claims _____

I, Kenneth D. Duntun, in a field survey on May 29, 1998 do hereby state that under requirements of P.A. 74, Michigan P.A. of 1970, the corner points mentioned in lines 1 and 2 above were in conformance with regulations and rules therefore as required in the current manual of survey instructions of the United States Department of the Interior, Bureau of Land Management or by a decree of a Court of Law and /or that the corner points mentioned in lines 3, 4 and 5 above were in conformance with the rules of the Michigan Board of Land Surveyors or by a Decree of a Court of Law; established, re-established, monumented, recovered, found as expressed below:

NOTE: Not more than 2 corners, all in the same town and range, may be recorded on this certificate.

	A	B	C	D	E	F	G	H	I	J	K	L	M
1													
2	6	5	4	3	2	1							
3													
4	7	8	9	10	11	12							
5													
6	10	17	16	15	14	13							
7													
8	19	20	21	22	23	24							
9													
10	30	29	28	27	26	25							
11													
12	31	32	33	34	35	36							
13													

A. Description of original monument and accessories and/or subsequent restoration:

G.L.O. Notes Nov. 17, 1834 by H. Parke, D. S. Set quarter section post, cedar 14" S6°W 35 links, Cedar 8" N 2 1/2°W 26 links.

B. Description of corner evidence found and/or method applied in restoring or reestablishing corner:

Found 1 1/4" iron pipe lying flat 2'± northwest of single proportion position. Established corner position by the single proportion method between M-9 & M-11, T12N-R9E and accepted as the best position of the original corner. Corner M-10, T12N-R9E is common with Corner A-10, T12N-R10E.

C. Description of monument for corner and accessories established to perpetuate locating the position of the corner:

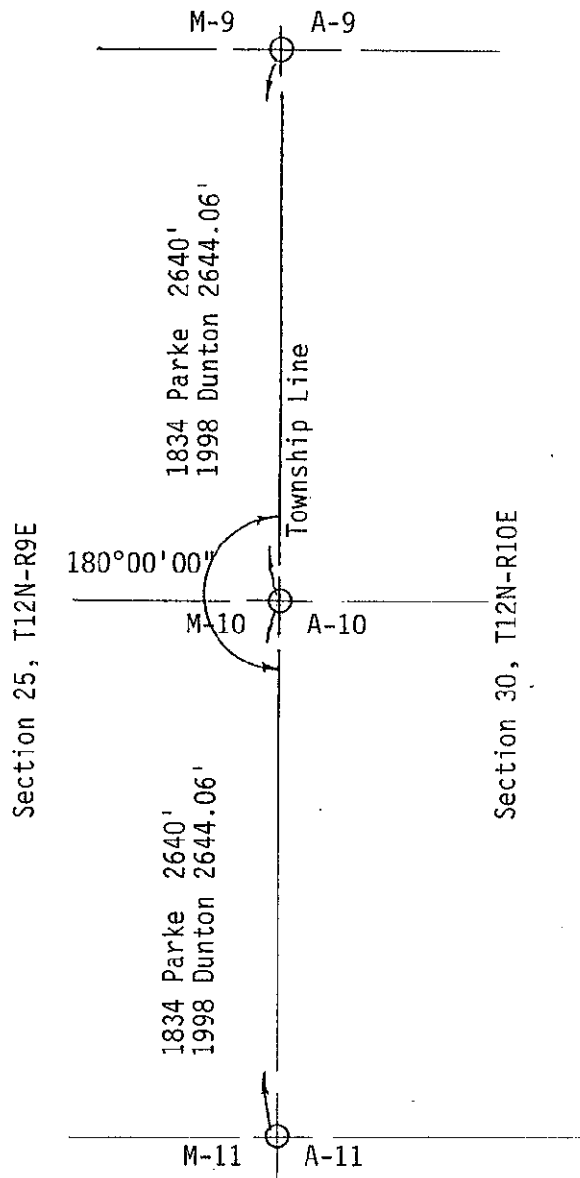
Placed standard monument stamped M-10, T12N-R9E by single proportion method. Placed carconite post at monument.
 N20°W 5.61' set remon. tag & spike in NE face 4" Maple.
 N35°E 7.47' set remon. tag & spike in SE face 3" Birch.
 S40°W 7.45' set remon. tag & spike in NW face 2" Maple.
 S30°E 1.16' set remon. tag & spike in NE face 3" Maple.
 S70°E 17.04' set remon. tag & spike in SW face 8" Maple.
 East 600' ± centerline trail.

Signed by *Kenneth D. Duntun*
Surveyor's Michigan License No. 23503

Date 11-2-98



APPROVED
11-2-98
J.M.I.
R.P.P.
A.P.E.



SURVEY &
REMONUMENTATION

MAR 02 1999

SECTION