

**SURVEY &
REMONUMENTATION**

MAR 02 1999

SECTION

1998 REMONUMENTATION PROGRAM
LAND CORNER RECORDATION CERTIFICATE
Filing Requirement of Act 74, Mich. P.A. 1970

RECEIVED FOR RECORD
LIBER NO. _____ PAGE NO. _____
FILE NO. #58
WELLS TWP
98 NOV 12 PM 4: 20

Gregory M. Dunton
TUSCOLA COUNTY
REGISTER OF DEEDS

For corners in Wells Township

<u>Tuscola</u> (County)	Located In:	Corner Code #
1. Public Land Survey	T <u>12N</u> R <u>10E</u>	<u>A-4</u>
	T _____ R _____	_____
	T _____ R _____	_____
	T _____ R _____	_____
2. Property Controlling in Section	S _____ T _____ R _____	_____
	S _____ T _____ R _____	_____
3. Miscellaneous Property in Sec.	S _____ T _____ R _____	_____
	S _____ T _____ R _____	_____

Register of Deeds Stamp & File Num

4. Lot No. _____, Recorded Plat _____
5. Private Claims _____

	A	B	C	D	E	F	G	H	I	J	K	L	M
1													
2		6		5		4		3		2		1	
3													
4	●	7		8		9		10		11		12	
5													
6		18		17		16		15		14		13	
7													
8		19		20		21		22		23		24	
9													
10		30		29		28		27		26		25	
11													
12		31		32		33		34		35		36	
13													

I, Kenneth D. Dunton in a field survey on May 31, 19 98 do hereby state that under requirements of P.A. 74, Michigan P.A. of 1970, the corner points mentioned in lines 1 and 2 above were in conformance with regulations and rules therefore as required in the current manual of survey instructions of the United States Department of the Interior, Bureau of Land Management or by a decree of a Court of Law and for that the corner points mentioned in lines 3, 4 and 5 above were in conformance with the rules of the Michigan Board of Land Surveyors or by a Decree of a Court of Law, established, re-established, monumented, recovered, found as expressed below:

NOTE: Not more than 2 corners, all in the same town and range, may be recorded on this certificate.

A. Description of original monument and accessories and/or subsequent restoration:

G.L.O. Notes Nov. 17, 1834 by H. Parke, D.S., set 1/4 section post, Hemlock 12" S42°W 43 links Hemlock 9" N43°W 46 1/2 links. *Nov. 8, 1988 Surveys L-589, P-949, 950, 1085 & 1086 by Russell L. Brown, P.S. #24588, found 1" pipe, North 5.78' spike in 5" Birch, West 15.83' spike in 8" Elm, S45°E 14.43' spike in 8" Elm.

*March 9, 1988 survey L-587, P76 through 79 by Kenneth D. Dunton, P. S. #23503, set 1" pipe at base of existing corner post, N 5.78' nail in 5" Birch, West 15.83' nail in 8" Elm, S45°E 14.43' nail in 8" Elm.

B. Description of corner evidence found and/or method applied in restoring or reestablishing corner:

Found 1" iron pipe & accepted as the best evidence of the original corner.

Corner A-4, T12N-R10E is common with Corner M-4, T12N-R9E.

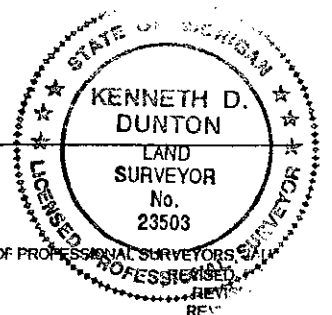
C. Description of monument for corner and accessories established to perpetuate locating the position of the corner:

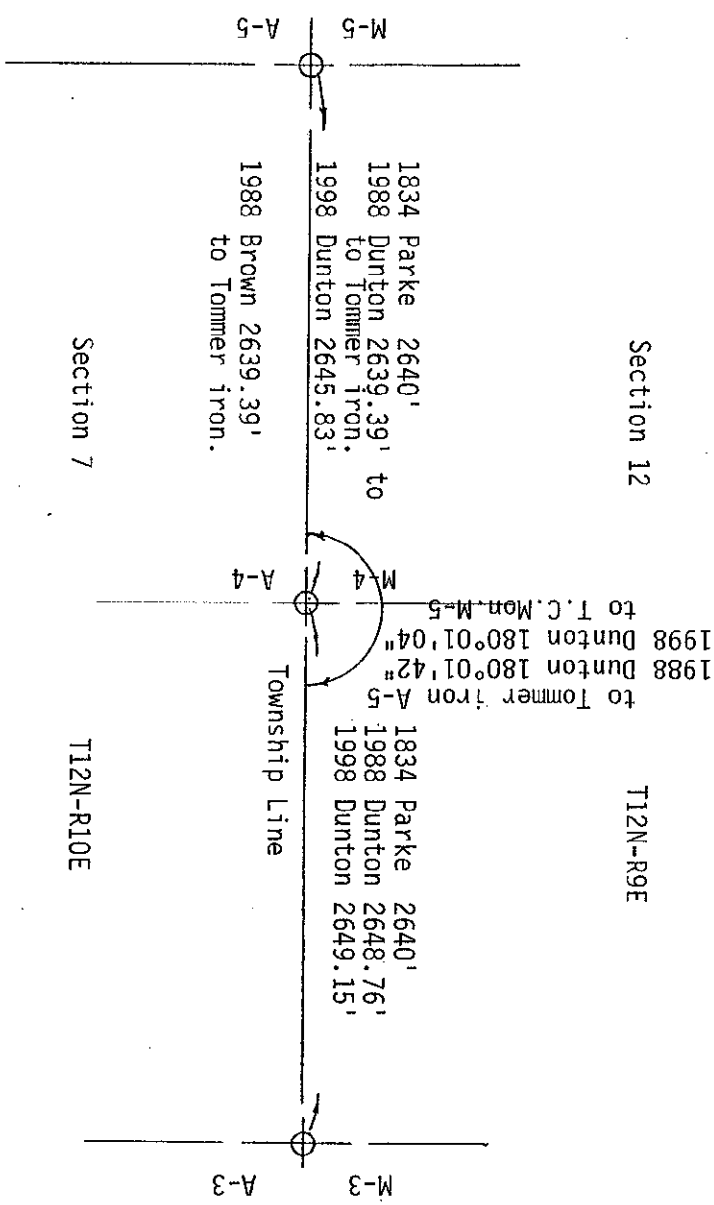
Removed 1" pipe & perpetuated with standard monument stamped M-4, T12N-R9E
North 18.64' set remon. tag & spike in West face 4" Basswood.
N80°E 10.75' set remon. tag & spike in NW face 4" Apple.
S45°E 14.41' set remon. tag & spike in NE face 10" Elm.
South 30.45' set remon. tag & spike in West face twin 6" Basswood.
West 15.88' set remon. tag & spike in South face 9" Elm stump.

Signed by *Kenneth D. Dunton*
Surveyor's Michigan License No. 23503

Date 11-4-98

APPROVED
11-4-98
RAB
JMT





[Handwritten mark]

SURVEY &
REMONUMENTATION

MAR 02 1999

SECTION