

SURVEY & REMONUMENTATION

MAR 02 1999

1998 REMONUMENTATION PROGRAM
LAND CORNER RECORDATION CERTIFICATE
 Filing Requirement of Act 74, Mich. P.A. 1970

RECEIVED FOR RECORD
 LIBER NO. _____ PAGE NO. _____
 FILE NO. #54

98 NOV 12 PM 4:19

WELLS TWP
Gregory M. Dunton

TUSCOLA COUNTY
 REGISTER OF DEEDS

For corners in WELLS Township

Tuscola
 (County)

Located In:

Corner Code #

1. Public Land Survey	T <u>12</u> N R <u>10</u> E	<u>A-8</u>
	T ___ R ___	_____
	T ___ R ___	_____
	T ___ R ___	_____
2. Property Controlling in Section	S ___ T ___ R ___	_____
	S ___ T ___ R ___	_____
3. Miscellaneous Property in Sec.	S ___ T ___ R ___	_____
	S ___ T ___ R ___	_____

Register of Deeds Stamp & File Number

4. Lot No. _____, Recorded Plat _____
 5. Private Claims _____

I, Kenneth D. Dunton, in a field survey on May 29, 1998 do hereby state that under requirements of P.A. 74, Michigan P.A. of 1970, the corner points mentioned in lines 1 and 2 above were in conformance with regulations and rules therefore as required in the current manual of survey instructions of the United States Department of the Interior, Bureau of Land Management or by a decree of a Court of Law and /or that the corner points mentioned in lines 3, 4 and 5 above were in conformance with the rules of the Michigan Board of Land Surveyors or by a Decree of a Court of Law; established, re-established, monumented, recovered, found as expressed below:

NOTE: Not more than 2 corners, all in the same town and range, may be recorded on this certificate.

1	A	B	C	D	E	F	G	H	I	J	K	L	M
2		6		5		4		3		2		1	
3													
4		7		8		9		10		11		12	
5													
6		18		17		16		15		14		13	
7													
8		19		20		21		22		23		24	
9													
10		30		29		28		27		26		25	
11													
12		31		32		33		34		35		36	
13													

A. Description of original monument and accessories and/or subsequent restoration:

G.L.O. Notes Nov. 17, 1834 by H. Parke, D.S. Set quarter section post, Tamarac 9" N48°W 27 links, Tamarac 11" S8°W 38 links.

B. Description of corner evidence found and/or method applied in restoring or reestablishing corner:

Found no evidence or accessories to original corner. Re-established by single proportion method between M-7 and M-9, T12N-R9E and accepted as the best position of the original corner. Corner A-8, T12N-R10E is common with Corner M-8, T12N-R9E.

C. Description of monument for corner and accessories established to perpetuate locating the position of the corner:

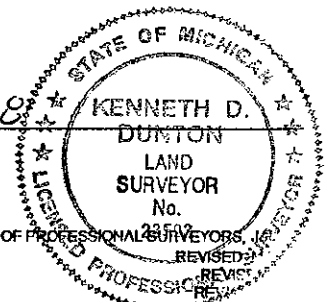
Set standard monument stamped M-8, T12N-R9E at single proportion position. Set carsonite post at monument.

- N40°W 21.30' set remon. tag & spike in NE face 24" Maple stump.
- N40°E 15'± top center old cedar stump.
- N80°E 40.88' set remon. tag & spike in North face wood post at North end fence.
- N85°E 42.10 set remon. tag & spike in South face Maple clump.
- S60°E 20.00' set remon. tag & spike in SW face 2" Cherry.
- S50°E 30.87' set remon. tag & spike in SW face 3" Oak.
- East 40'± N-S fence line.
- East 100'± centerline trail.

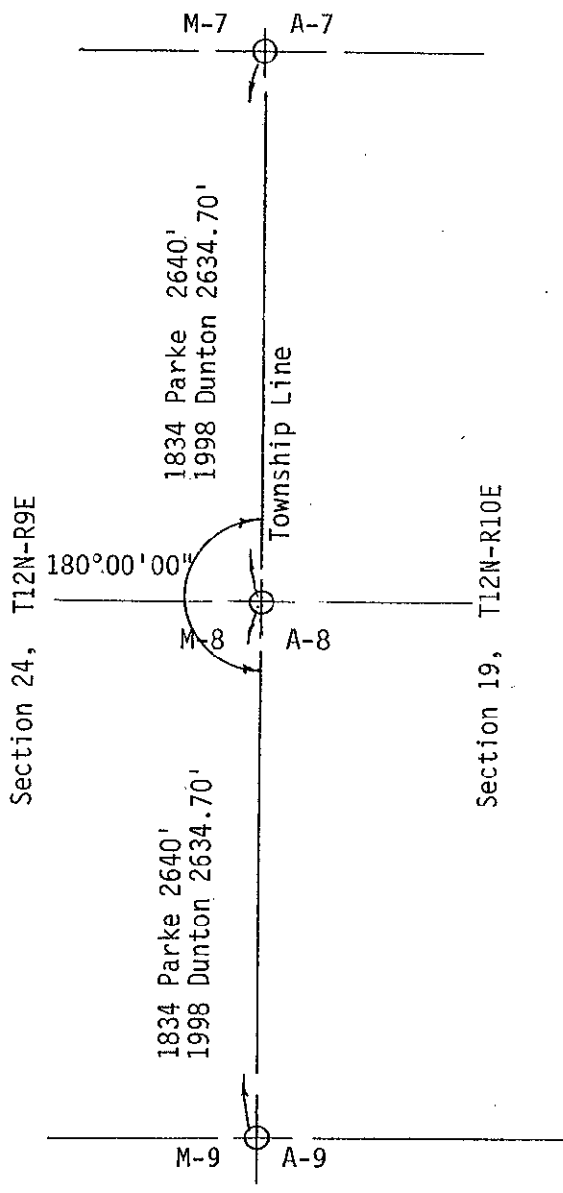
Signed by *Kenneth D. Dunton*
 Surveyor's Michigan License No. 23503

Date 11-4-98

APPROVED
 11-4-98
K.D.D.
R.B.
J.M.T.



ISSUED BY MICHIGAN STATE BOARD OF PROFESSIONAL SURVEYORS, REVISED 1997



SURVEY &
REMONUMENTATION

MAR 02 1999

SECTION