

MAR 02 1999

1998 REMONUMENTATION PROGRAM
LAND CORNER RECORDATION CERTIFICATE
 Filing Requirement of Act 74, Mich. P.A. 1970

SECTION

For corners in Wells Township

<u>Tuscola</u> (County)	Located In:	Corner Code #
1. Public Land Survey	T <u>12N</u> R <u>10E</u>	<u>A-10</u>
	T <u> </u> R <u> </u>	<u> </u>
	T <u> </u> R <u> </u>	<u> </u>
	T <u> </u> R <u> </u>	<u> </u>
2. Property Controlling in Section	S <u> </u> T <u> </u> R <u> </u>	<u> </u>
	S <u> </u> T <u> </u> R <u> </u>	<u> </u>
3. Miscellaneous Property in Sec.	S <u> </u> T <u> </u> R <u> </u>	<u> </u>
	S <u> </u> T <u> </u> R <u> </u>	<u> </u>

RECEIVED FOR RECORD
 LIBER. NO. _____ PAGE NO. _____
 FILE NO. #52
WELLS TWP.
 98 NOV 12 PM 4: 19
Garry M. Dunton
 TUSCOLA COUNTY
 REGISTER OF DEEDS

Register of Deeds Stamp & File Num^l

4. Lot No. _____, Recorded Plat _____
 5. Private Claims _____

I, Kenneth D. Dunton, in a field survey on May 29, 1998 do hereby state that under requirements of P.A. 74, Michigan P.A. of 1970, the corner points mentioned in lines 1 and 2 above were in conformance with regulations and rules therefore as required in the current manual of survey instructions of the United States Department of the Interior, Bureau of Land Management or by a decree of a Court of Law and/or that the corner points mentioned in lines 3, 4 and 5 above were in conformance with the rules of the Michigan Board of Land Surveyors or by a Decree of a Court of Law; established, re-established, monumented, recovered, found as expressed below:

NOTE: Not more than 2 corners, all in the same town and range, may be recorded on this certificate.

	A	B	C	D	E	F	G	H	I	J	K	L	M
1													
2	6			5		4		3		2		1	
3													
4	7			8		9		10		11		12	
5													
6	18			17		16		15		14		13	
7													
8	19			20		21		22		23		24	
9													
10	30			29		28		27		26		25	
11													
12	31			32		33		34		35		36	
13													

A. Description of original monument and accessories and/or subsequent restoration:

G.L.O. Notes Nov. 17, 1834 by H. Parke, D. S. Set quarter section post, cedar 14" S6°W 35 links, Cedar 8" N 2 1/2°W 26 links.

B. Description of corner evidence found and/or method applied in restoring or reestablishing corner:

Found 1 1/4" iron pipe lying flat 2'± northwest of single proportion position. Established corner position by the single proportion method between M-9 and M-11, T12N-R9E and accepted as the best position of the original corner. Corner A-10, T12N-R10E is common with Corner M-10, T12N-R9E.

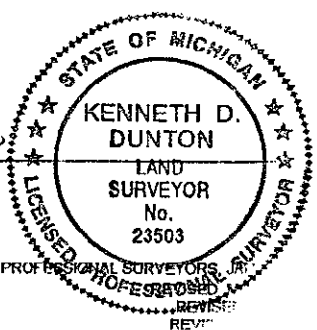
C. Description of monument for corner and accessories established to perpetuate locating the position of the corner:

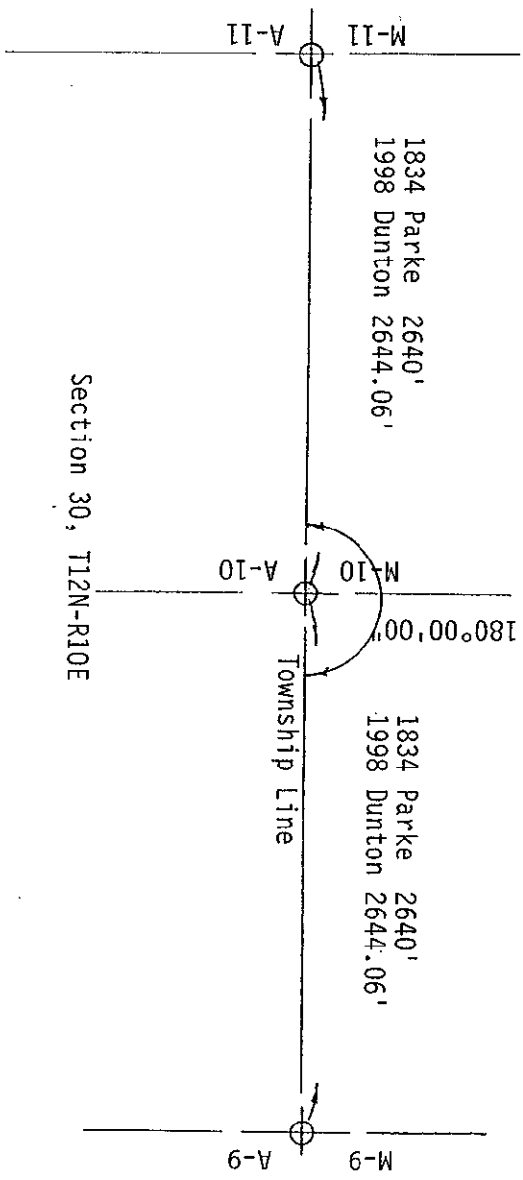
Placed standard monument stamped M-10, T12N-R9E by single proportion method. Placed carsonite post at monument.
 N20°W 5.61' set remon. tag & spike in NE face 4" Maple.
 N35°E 7.47' set remon. tag & spike in SE face 3" Birch.
 S40°W 7.45' set remon. tag & spike in NW face 2" Maple.
 S30°E 1.16' set remon. tag & spike in NE face 3" Maple.
 S70°E 17.04' set remon. tag & spike in SW face 8" Maple.
 East 600' ± centerline trail.

Signed by *Kenneth D. Dunton*
 Surveyor's Michigan License No. 23503

Date 11-4-98

APPROVED
11-4-98
F.H.C.
J.M.T.





Section 25, T12N-R9E

Section 30, T12N-R10E

1834 Parke 2640'
1998 Duntun 2644.06'

1834 Parke 2640'
1998 Duntun 2644.06'

M-11 A-11

M-10 A-10

M-9 A-9

Township Line

180°00'00"



SURVEY &
REMONUMENTATION

MAR 02 1999

SECTION