

MAR 02 1999

1998 REMONUMENTATION PROGRAM

RECEIVED FOR RECORD  
LIBER NO. \_\_\_\_\_ PAGE NO. \_\_\_\_\_  
FILE NO. #57

SECTION

LAND CORNER RECORDATION CERTIFICATE  
Filing Requirement of Act 74, Mich. P.A. 1970

98 NOV 12 PM 4:19  
WELLS TWP

For corners in Wells Township

Tuscola (County)	Located In:	Corner Code #
1. Public Land Survey	T <u>12N</u> R <u>10E</u>	<u>A-11</u>
	T _____ R _____	_____
	T _____ R _____	_____
	T _____ R _____	_____
2. Property Controlling in Section	S _____ T _____ R _____	_____
	S _____ T _____ R _____	_____
3. Miscellaneous Property in Sec.	S _____ T _____ R _____	_____
	S _____ T _____ R _____	_____

*Garry M. Dunton*  
TUSCOLA COUNTY  
REGISTER OF DEEDS

Register of Deeds Stamp & File Number

4. Lot No. \_\_\_\_\_, Recorded Plat \_\_\_\_\_  
5. Private Claims \_\_\_\_\_

I, Kenneth D. Dunton, in a field survey on May 29, 1998 do hereby state that under requirements of P.A. 74, Michigan P.A. of 1970, the corner points mentioned in lines 1 and 2 above were in conformance with regulations and rules therefore as required in the current manual of survey instructions of the United States Department of the Interior, Bureau of Land Management or by a decree of a Court of Law and/or that the corner points mentioned in lines 3, 4 and 5 above were in conformance with the rules of the Michigan Board of Land Surveyors or by a Decree of a Court of Law; established, re-established, monumented, recovered, found as expressed below:

NOTE: Not more than 2 corners, all in the same town and range, may be recorded on this certificate.

	A	B	C	D	E	F	G	H	I	J	K	L	M
1													
2		6		5		4		3		2		1	
3													
4		7		8		9		10		11		12	
5													
6		10		17		16		15		14		13	
7													
8		19		20		21		22		23		24	
9													
10		30		29		28		27		26		25	
11													
12		31		32		33		34		35		36	
13													

A. Description of original monument and accessories and/or subsequent restoration:

G.L.O. Notes Nov. 17, 1834 by H. Parke, D.S. Set post corner Sections 25 & 36, Beech 12" S16°W 23 links, Hemlock 7" N35°W 16 links. Dec. 13, 1976 L.C.R.C. Page 31 by Kenneth D. Dunton with Rowe Engineering. Set R.R. spike by doubling 1/8 line fence distance. Checked distance to N 1/4 corner Section 31, Wells Township, T12N-R10E, S50°E 35.75' R.L.S. tag #111 in corner fence post, N45°E 32.65' road sign post, N30°W 67.20' R.L.S. #11192 tag in 8" Pop; S60°W 66.42' R.L.S. tag #11192 in 8" Birch, N60°W 15.22' south edge of south leg of road sign Dec. 14, 1976 Rowe Eng. section corner card by Wayne F. Clink, Survey Chief, same object & accessories as L.C.R.C. Page 31.

Section A con't on back of form.

B. Description of corner evidence found and/or method applied in restoring or reestablishing corner:

Found 1 1/8" steel rod 15" long in 1 3/4" x 12" iron pipe with large rock below pipe, larger rock surrounded by 6 smaller rocks. Accepted rod, pipe & rock as the best evidence of the original corner.  
Corner A-11, T12N-R10E is common with Corner M-11, T12N-R9E.

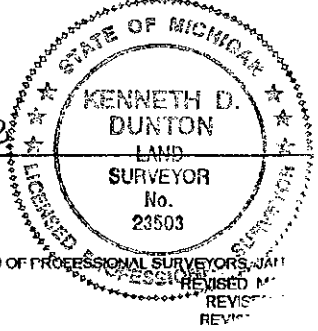
C. Description of monument for corner and accessories established to perpetuate locating the position of the corner:

Removed rod, pipe & large rock. Perpetuated with standard monument stamped M-11, T12N-R9E. Placed small rocks around monument.  
N70°W 47.41' set remon. tag & spike in SW face 5" Elm.  
N70°E 52.47' set remon. tag & spike over spike fnd. in NW cor. 4" x 4" post.  
S65°W 19.39' set remon. tag & spike over spike fnd. in NW face 9" Ash.  
S55°E 52.54' set remon. tag & spike in NE face 10" Ash.  
S12°E 17.51' fnd. R.R. spike.

Signed by *Kenneth D. Dunton*  
Surveyor's Michigan License No. 23503

Date 11-4-98

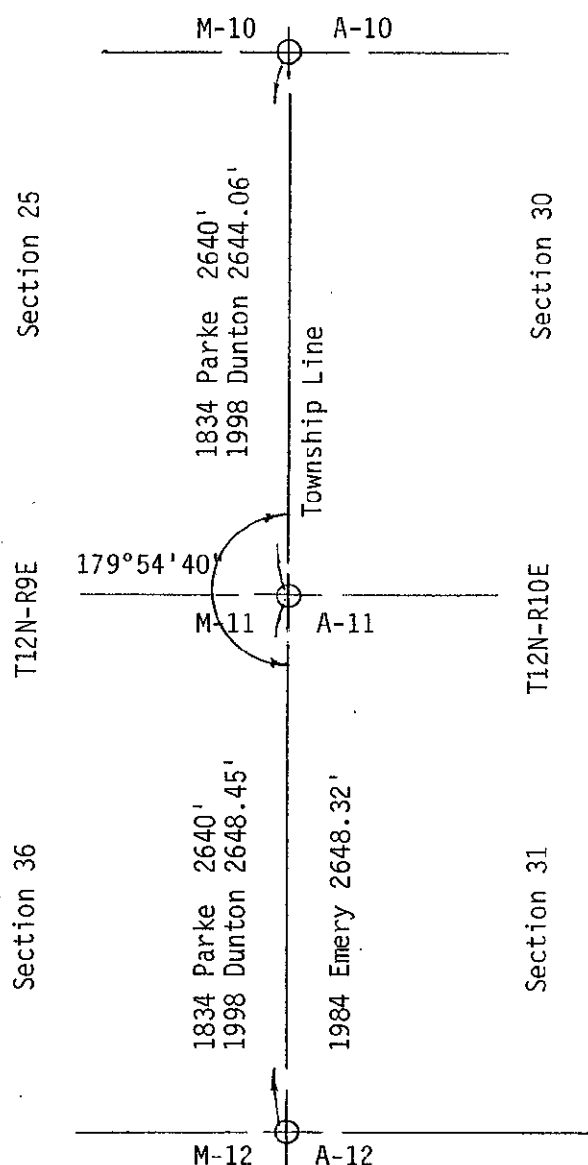
APPROVED  
11-4-98  
*[Signatures]*



Section A con't. from front of form:

\*L.C.R.C. Page 27 by

Dec. 14, 1976 Survey L-468, P-358 by David T. Rowe, P.S. #11192, object and accessories same as L.C.R.C. Page 31. June 4, 1984\* Lionel Roy Emery P.S. #24593, found 2" o.d. tubular shaft encircled with stones, N75°E 52.44' nail in 4" x 4" post, S60°E 76.78' nail in 10" Poplar, S12°E 17.65' found R.R. spike, S70°W 19.51' nail in 6" Ash. June 20, 1984 Surveys L-542, P-610, 611, 612 & 613 by Lionel Roy Emery, P.S. #24593, same object and accessories as L.C.R.C. Page 27.



SURVEY & REMONUMENTATION

MAR 02 1999

SECTION