

SURVEY & REMONUMENTATION

MAR 02 1999

1998 REMONUMENTATION PROGRAM
LAND CORNER RECORDATION CERTIFICATE
 Filing Requirement of Act 74, Mich. P.A. 1970

SECTION

For corners in Wells Township

RECEIVED FOR RECORD
 LIBER NO. _____ PAGE NO. _____
 FILE NO. #71
 WELLS TWP.
 98 DEC 10 PM 4:13
 TUSCOLA COUNTY
 REGISTER OF DEEDS

Tuscola

(County)

Located In:

Corner Code #

1. Public Land Survey

T12N R10E

M-2

T R

T R

T R

2. Property Controlling in Section

S

T R

S

T R

3. Miscellaneous Property in Sec.

S

T R

S

T R

Register of Deeds Stamp & File Number

4. Lot No. _____, Recorded Plat _____

5. Private Claims _____

	A	B	C	D	E	F	G	H	I	J	K	L	M
1													
2	6		5		4		3		2		1		
3													
4	7		8		9		10		11		12		
5													
6	18		17		16		15		14		13		
7													
8	19		20		21		22		23		24		
9													
10	30		29		28		27		26		25		
11													
12	31		32		33		34		35		36		
13													

I, Kenneth D. Dunton, in a field survey on June 21, 1998 do hereby state that under requirements of P.A. 74, Michigan P.A. of 1970, the corner points mentioned in lines 1 and 2 above were in conformance with regulations and rules therefore as required in the current manual of survey instructions of the United States Department of the Interior, Bureau of Land Management or by a decree of a Court of Law and /or that the corner points mentioned in lines 3, 4 and 5 above were in conformance with the rules of the Michigan Board of Land Surveyors or by a Decree of a Court of Law; established, re-established, monumented, recovered, found as expressed below:

NOTE: Not more than 2 corners, all in the same town and range, may be recorded on this certificate.

A. Description of original monument and accessories and/or subsequent restoration:

G.L.O. notes Nov. 17, 1834 by H. Parke, D.S., set 1/4 section post, Pine 50" S13°W 21 links, Hemlock 10" N26°W 37 links.

B. Description of corner evidence found and/or method applied in restoring or reestablishing corner:

Excavated several locations along township line (proportional to G.L.O. and found nothing, opposite edge mowed field to west and found nothing and 2635 to 2645 feet north of corner M-3) and found 10" x 10" x 18" pointed stone at 2639.10' north of Corner M-3. Accepted found stone as the best evidence of the original corner.

Corner M-2, T12N-R10E is common with Corner A-2, T12N-R11E.

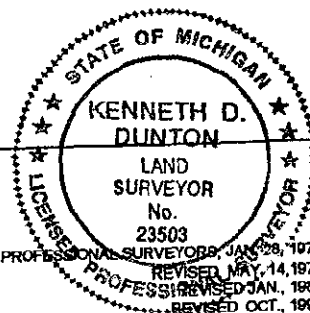
C. Description of monument for corner and accessories established to perpetuate locating the position of the corner:

Removed stone & perpetuated with standard monument stamped M-2, T12N-R10E. Placed circle of stones and glass around base of monument.

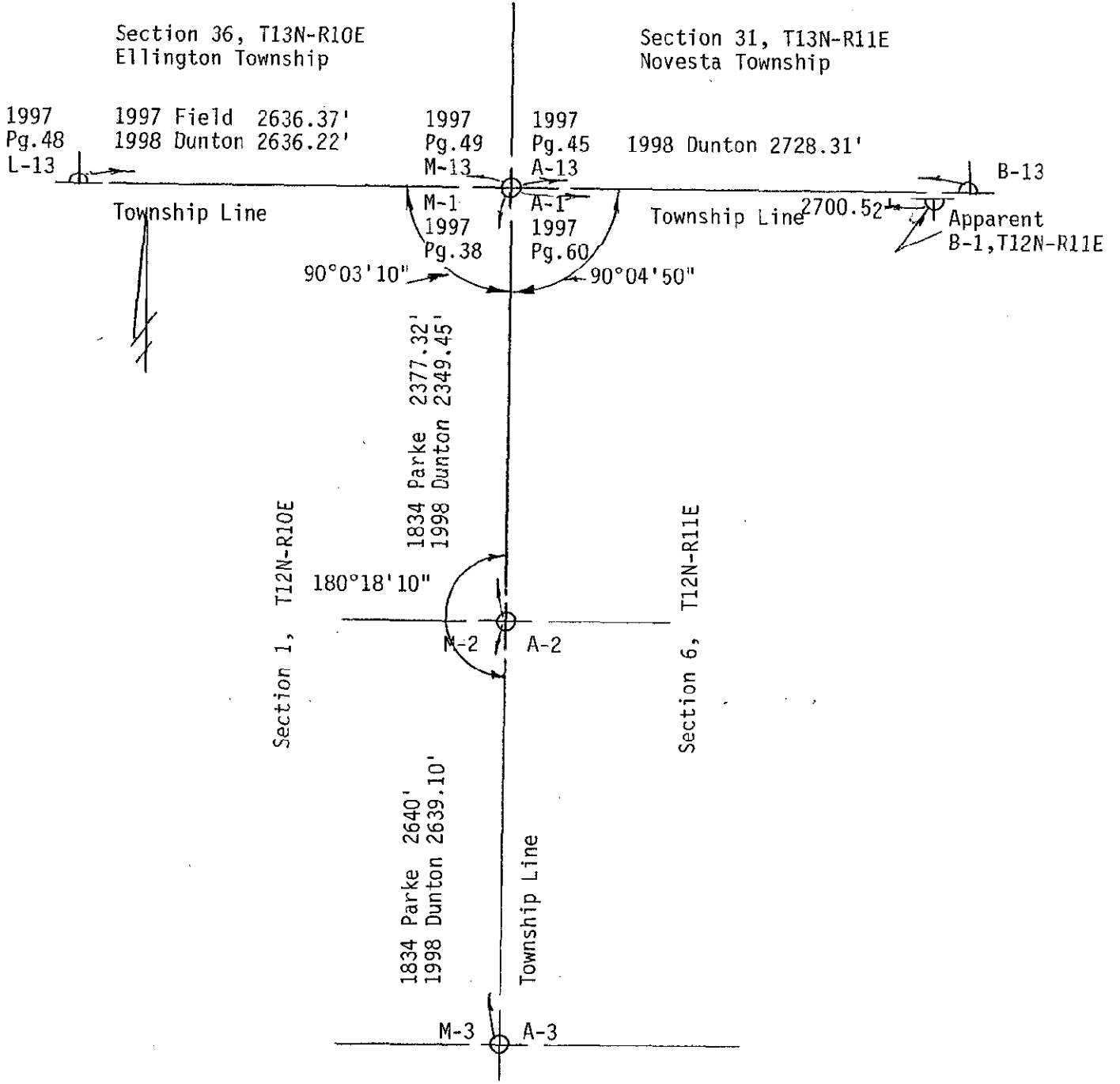
- N20°E 61.31' set T.C. Remon. tag & spike in W. face 12" Ash.
- S25°E 21.96' set 1/2" re-rod in E. edge road.
- West 33.00' set 1/2" re-rod (not on E-W 1/4 line).
- East 33.00' set 1/2" re-rod (not on E-W 1/4 line).
- N15°W 64.73' chiseled notch atop W. end 30' of 15" CSP.
- N15°E 63.80' chiseled notch atop E. end 30' of 15" CSP.
- North 8'± South edge mowed field to west.

Signed by [Signature]
 Surveyor's Michigan License No. 23503

Date 11-25-98



APPROVED
11-25-98
 [Signatures]



SURVEY &
REMONUMENTATION

MAR 02 1999

SECTION