

MAR 02 1999

SECTION

**1998 REMONUMENTATION PROGRAM
LAND CORNER RECORDATION CERTIFICATE
Filing Requirement of Act 74, Mich. P.A. 1970**

For corners in Wells Township

| | | |
|------------------------------------|-------------|---------------|
| <u>Tuscola</u> (County) | Located In: | Corner Code # |
| 1. Public Land Survey | T12N R10E | M-4 |
| | T R | |
| | T R | |
| | T R | |
| 2. Property Controlling in Section | S T R | |
| | S T R | |
| 3. Miscellaneous Property in Sec. | S T R | |
| | S T R | |

RECEIVED FOR RECORD
LIBER NO. _____ PAGE NO. _____
FILE NO. #169
WELLS TWP
98 DEC 10 PM 4:13
TUSCOLA COUNTY REGISTER OF DEEDS
Gregory M. Johnson

Register of Deeds Stamp & File Number

4. Lot No. _____, Recorded Plat _____
5. Private Claims _____

I, Kenneth D. Dunton in a field survey on April 25 1998 do hereby state that under requirements of P.A. 74, Michigan P.A. of 1970, the corner points mentioned in lines 1 and 2 above were in conformance with regulations and rules therefore as required in the current manual of survey instructions of the United States Department of the Interior, Bureau of Land Management or by a decree of a Court of Law and for that the corner points mentioned in lines 3, 4 and 5 above were in conformance with the rules of the Michigan Board of Land Surveyors or by a Decree of a Court of Law; established, re-established, monumented, recovered, found as expressed below:

NOTE: Not more than 2 corners, all in the same town and range, may be recorded on this certificate.

| | | | | | | | | | | | | | |
|----|----|---|----|---|----|---|----|---|----|---|----|---|---|
| | A | B | C | D | E | F | G | H | I | J | K | L | M |
| 1 | | | | | | | | | | | | | |
| 2 | 6 | | 5 | | 4 | | 3 | | 2 | | 1 | | |
| 3 | | | | | | | | | | | | | |
| 4 | 7 | | 8 | | 9 | | 10 | | 11 | | 12 | | |
| 5 | | | | | | | | | | | | | |
| 6 | 18 | | 17 | | 16 | | 15 | | 14 | | 13 | | |
| 7 | | | | | | | | | | | | | |
| 8 | 19 | | 20 | | 21 | | 22 | | 23 | | 24 | | |
| 9 | | | | | | | | | | | | | |
| 10 | 30 | | 29 | | 28 | | 27 | | 26 | | 25 | | |
| 11 | | | | | | | | | | | | | |
| 12 | 31 | | 32 | | 33 | | 34 | | 35 | | 36 | | |
| 13 | | | | | | | | | | | | | |

A. Description of original monument and accessories and/or subsequent restoration:

G.L.O. Notes Nov. 17, 1834 by H. Parke, D.S., set 1/4 section post, Hemlock 12" S42°W 43 links, Hemlock 9" N43°W 46 1/2 links. Pages 104 & 105 undated survey of Section 12, T12N-R10E by John A. Teskey, County Surveyor (J.A. Teskey was County Surveyor 1886 to 1890) Pine stake set by proportion distance, no accessories.

B. Description of corner evidence found and/or method applied in restoring or reestablishing corner:

Found 1" axle shaft at North face 10" corner post stub, remains old fence N, S, E & W. Accepted axle shaft as the best evidence of the original corner.

Corner M-4, T12N-R10E is common with Corner A-4, T12N-R11E.

C. Description of monument for corner and accessories established to perpetuate locating the position of the corner:

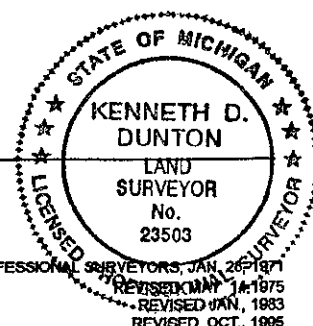
Removed axle shaft and corner post stub and perpetuated with standard monument stamped M-4, T12N-R10E. Placed circle of wire fence around base of monument & carsonite post at monument.

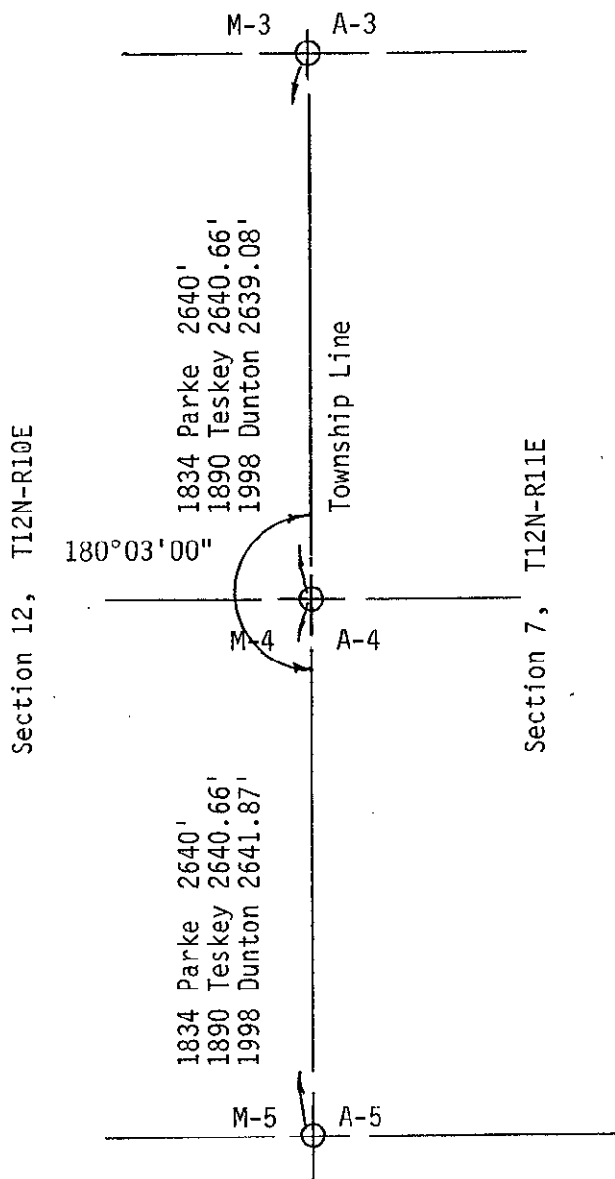
- S60°W 18.08' set T.C. Remon. tag & spike in NW face 7" Maple.
- N55°W 15.27' set T.C. Remon. tag & spike in NE face 14" Poplar.
- N65°E 11.53' set T.C. Remon. tag & spike in S. face 14" Poplar.
- S05°E 16.09' set T.C. Remon. tag & spike in W. face 20" Poplar.

Signed by *Kenneth D. Dunton*
Surveyor's Michigan License No. 23503

Date 11-25-98

APPROVED
11-25-98
J.M.F.
J.P.E.





SURVEY &
REMONUMENTATION

MAR 02 1999

SECTION