

SURVEY & REMONUMENTATION

MAR 02 1999

1998 REMONUMENTATION PROGRAM

LAND CORNER RECORDATION CERTIFICATE
Filing Requirement of Act 74, Mich. P.A. 1970

SECTION

For corners in Wells Township

Tuscola

(County)

Located In:

Corner Code #

1. Public Land Survey

T12N R 10E

M-5

T R

T R

T R

2. Property Controlling in Section

S T R

S T R

3. Miscellaneous Property in Sec.

S T R

S T R

4. Lot No. _____, Recorded Plat _____

5. Private Claims _____

I, Kenneth D. Dunton, in a field survey on April 12th 1998 do hereby state that under requirements of P.A. 74, Michigan P.A. of 1970, the corner points mentioned in lines 1 and 2 above were in conformance with regulations and rules therefore as required in the current manual of survey instructions of the United States Department of the Interior, Bureau of Land Management or by a decree of a Court of Law and/or that the corner points mentioned in lines 3, 4 and 5 above were in conformance with the rules of the Michigan Board of Land Surveyors or by a Decree of a Court of Law; established, re-established, monumented, recovered, found as expressed below:

NOTE: Not more than 2 corners, all in the same town and range, may be recorded on this certificate.

	A	B	C	D	E	F	G	H	I	J	K	L	M
1													
2		6		5		4		3		2		1	
3													
4		7		8		9		10		11		12	
5													
6		18		17		16		15		14		13	
7													
8		19		20		21		22		23		24	
9													
10		30		29		28		27		26		25	
11													
12		31		32		33		34		35		36	
13													

A. Description of original monument and accessories and/or subsequent restoration:

G.L.O. Notes Nov. 17, 1834 by H. Parke, D.S., set post corner Sections 12 & 13, Birch 15" S56°W 36 links, Elm 9" N48°W 12 links. Pages 105 & 105 undated survey of Section 12, T12N-R10E by John A. Teskey, County Surveyor (J.A. Teskey was County Surveyor 1886 to 1890) cedar stake previously set, no accessories. Feb. 28, 1995 L.C.R.C. page 57 by Earl E. Gravlin, P.S. #23510, found nothing, no record of surveys, extended centerline of road from West 1/4 corner and extended fence line from North. Set R.R. spike. North 11.50' W. leg of sign, S52°W 47.31' wood corner post, S41°E 52.93' wood post tele. riser. Feb. 28, 1995 Survey L-681, P-1382, 1383 & 1384 by Earl E. Gravlin, P.S. #23510, same object & accessories as L.C.R.C. Page 57.

B. Description of corner evidence found and/or method applied in restoring or reestablishing corner:

Dug & found no evidence other than the railroad spike by Gravlin. Measurement north to Corner M-4 checked J.A. Teskey's measure relatively well. Accepted railroad spike as the best evidence of the original corner.

Corner M-5, T12N-R10E is common with Corner A-5, T12N-R11E.

C. Description of monument for corner and accessories established to perpetuate locating the position of the corner:

Removed R.R. spike and perpetuated with standard monument stamped M-5, T12N-R10E. Placed circle stones & pieces of iron around base of monument.
 S50°W 47.38' fnd. spike in E. face 4" x 6" wood cor. post.
 S42°E 52.95' fnd. spike in SW face T. pole stub.
 N75°E 136.15' set T.C. Remon. tag & spike in NW face P. pole.
 S20°E 68.80' set T.C. Remon. tag & spike in W. face 15" Apple.
 North 25'± centerline E-W drain.

Signed by

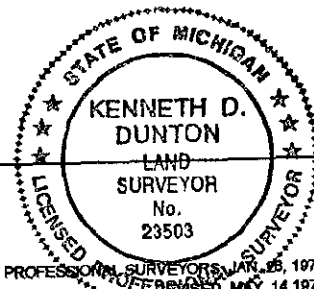
Kenneth D. Dunton

Date

11-25-98

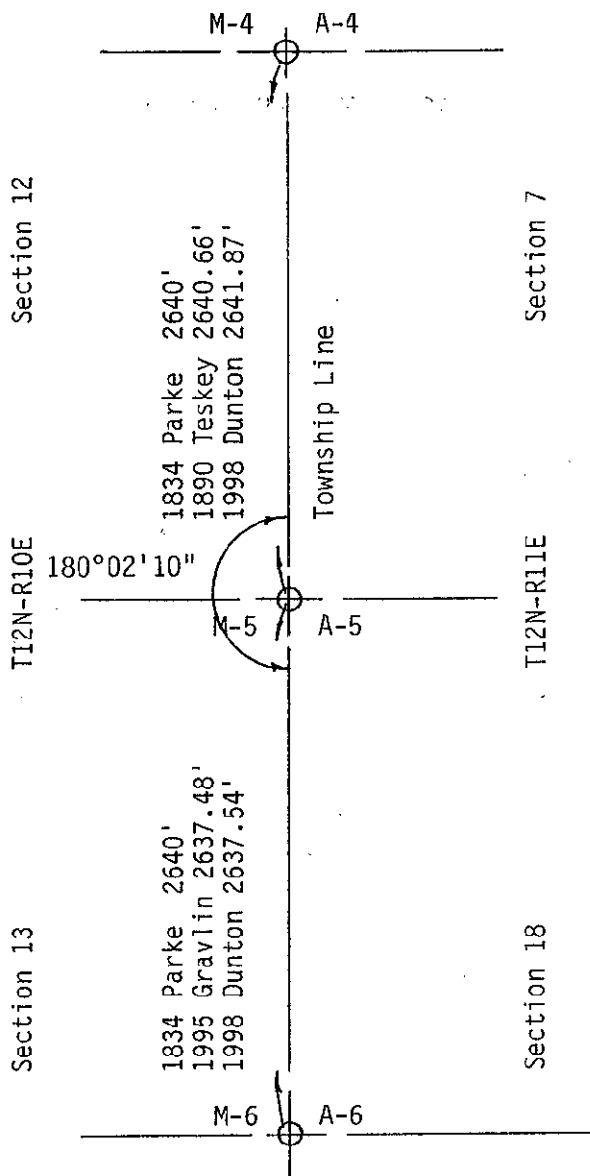
Surveyor's Michigan License No.

23503



APPROVED
11-25-98
J.M.H.
R.K.S.
P.A.G.

RECEIVED FOR RECORD
 LIBER NO. _____ PAGE NO. _____
 FILE NO. #168
 WELLS Twp
 98 DEC 10 PM 4:13
 TUSCOLOA COUNTY
 REGISTER OF DEEDS
 Register of Deeds Stamp & File Number



SURVEY &
REMONUMENTATION

MAR 02 1999

SECTION