

MAR 02 1999

1998 REMONUMENTATION PROGRAM LAND CORNER RECORDATION CERTIFICATE Filing Requirement of Act 74, Mich. P.A. 1970

SECTION

For corners in Wells Township

Tuscola (County)

Located In:

Corner Code #

- 1. Public Land Survey T12N R10E M-11
2. Property Controlling in Section S T R
3. Miscellaneous Property in Sec. S T R

RECEIVED FOR RECORD LIBER NO. PAGE NO. FILE NO. #603 WELLS TWP 98 DEC 10 PM 4:12

TUSCOLA COUNTY REGISTER OF DEEDS

Register of Deeds Stamp & File Number

4. Lot No. Recorded Plat
5. Private Claims

I, Kenneth D. Dunton, in a field survey on April 18, 1998 do hereby state that under requirements of P.A. 74, Michigan P.A. of 1970, the corner points mentioned in lines 1 and 2 above were in conformance with regulations and rules therefore as required in the current manual of survey instructions of the United States Department of the Interior, Bureau of Land Management or by a decree of a Court of Law and for that the corner points mentioned in lines 3, 4 and 5 above were in conformance with the rules of the Michigan Board of Land Surveyors or by a Decree of a Court of Law; established, re-established, monumented, recovered, found as expressed below:

NOTE: Not more than 2 corners, all in the same town and range, may be recorded on this certificate.

Grid table with columns A-M and rows 1-13. Cell (11, M) contains a black dot.

A. Description of original monument and accessories and/or subsequent restoration:

G.L.O. Notes Nov. 17, 1834 by H. Parke, D.S., set post corner Sections 25 & 36, Beech 12" S16°W 23 links, Hemlock 7" N 35°W 16 links. June 24, 1895 Survey Pages 272 & 273 of Section 36, T12N-R10E by Edward L. Teskey, County Surveyor, stake previously established by J. A. Teskey from B.T., stone & crockery, no accessories given. August 22 through 29, 1904 Surveys Pages 30, 31, 60, 61 and loose leaf copy, Section 25, T12N-R10E by L. M. Brumley, County Surveyor, stone & crockery, cedar stake N45°W 40 links. Sept. 1906 Survey Pages 96 & 97 of Section 30, T12N-R11E, by L. M. Brumley, County Surveyor, see Sec. 25, T12N-R10E. Oct. 14, 1993 Survey L-656, P-327 & 328 by Earl E. Gravlin, P.S. #23510, found re-rod, N55°E 52.78' nail in T.P. stub. Sec. A con't on back of form.

B. Description of corner evidence found and/or method applied in restoring or reestablishing corner:

Found 1/2" iron rod & cap #24593, also found small stone & pieces of china. Accepted found 1/2" rod, stone & china as the best evidence of the original corner.

Corner M-11, T12N-R10E is common with Corner A-11, T12N-R11E.

C. Description of monument for corner and accessories established to perpetuate locating the position of the corner:

Removed 1/2" rod & cap and perpetuated with standard monument stamped M-11, T12N-R10E. Placed stone, china, broken & ground glass around base of monument. N50°E 53.07' set T.C. Remon. tag & spike in NW face new T. Pole. S10°E 20.88' fnd. spike in W. face corner post. S20°W 41.90' set T.C. Remon. tag & spike in East face 15" Pine. S80°W 103.79' set T.C. Remon. tag & spike in North face 36" Pin Cherry. N60°W 46.12' fnd. spike in NE face corner post. N70°E 3.2' fnd. 1" iron bar.

Signed by [Signature] Surveyor's Michigan License No. 23503

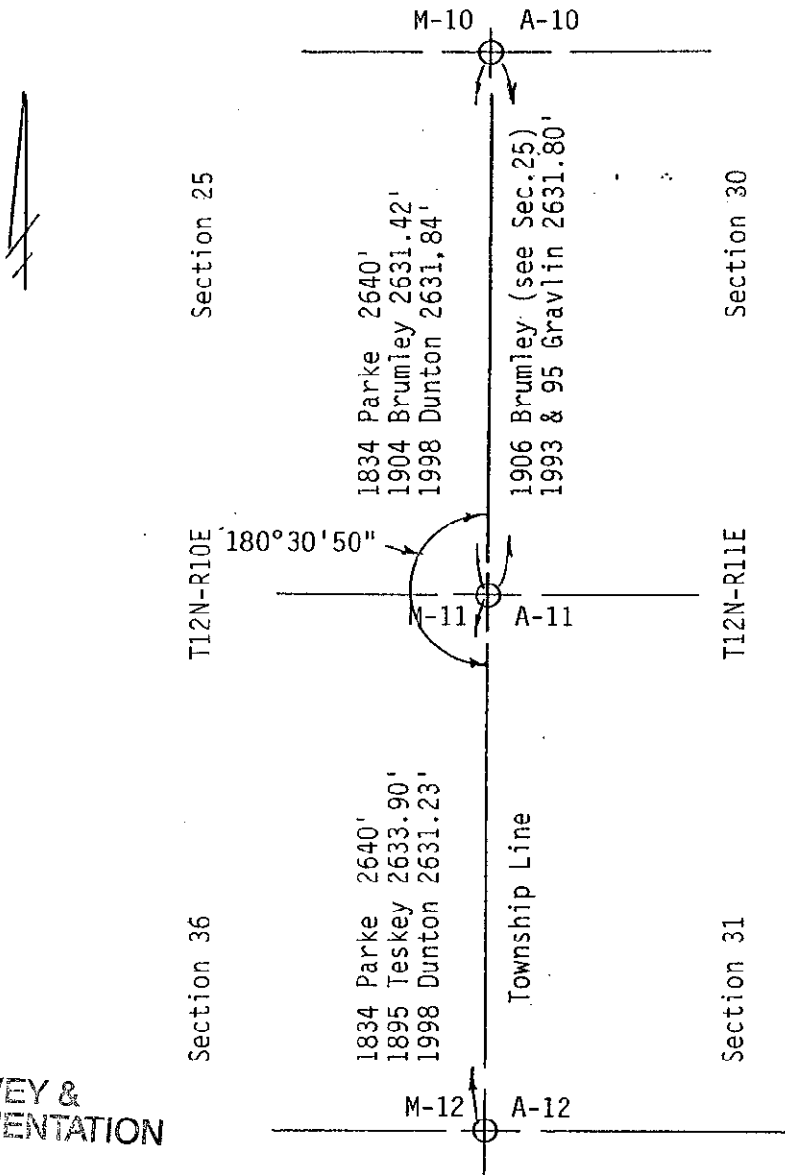
Date 11-25-98



APPROVED 11-25-98 [Signatures]

Section A Con't.

S05°E 20.85' nail in fence post, S80°W 103.82' nail in multi-trunk Cherry, N70°E 3.20' 1 1/4" diam. shaft, 4' ± S. centerline road. Aug. 3, 1995 Survey L-681, P-1378 through 1381 by Earl E. Gravlin, P.S. #23510, same object and accessories as Survey L-656, P-327 & 328.



SURVEY &
REMONUMENTATION

MAR 02 1999

SECTION