

MAR 05 1998

SECTION

1997 REMONUMENTATION PROGRAM
LAND CORNER RECORDATION CERTIFICATE
Filing Requirement of Act 74, Mich. P.A. 1970

For corners in Kingston Township

Tuscola
(County)

Located In:

Corner Code #

- 1. Public Land Survey T12N R11E G-13
 T R
 T R
 T R
- 2. Property Controlling S T R
 in Section S T R
- 3. Miscellaneous S T R
 Property in Sec. S T R

- 4. Lot No. _____, Recorded Plat _____
- 5. Private Claims _____

Kenneth D. Dunton, in a field survey on Sept. 28 1997 do hereby state that under requirements of P.A. 74, Michigan P.A. of 1970, the corner points mentioned in lines 1 and 2 above were in conformance with regulations and rules therefore as required in the current manual of survey instructions of the United States Department of the Interior, Bureau of Land Management or by a decree of a Court of Law and/or that the corner points mentioned in lines 3, 4 and 5 above were in conformance with the rules of the Michigan Board of Land Surveyors or by a Decree of a Court of Law; established, re-established, monumented, recovered, found as expressed below:

NOTE: Not more than 2 corners, all in the same town and range, may be recorded on this certificate.

RECEIVED FOR RECORD
 LIBER NO. _____ PAGE NO. _____
 FILE NO. # 66
 97 NOV 12 PM 3:47
 TUSCOLA COUNTY REGISTER OF DEEDS
 COPY
 Register of Deeds Stamp & File Number

A	B	C	D	E	F	G	H	I	J	K	L	M
1												
2	6		5		4		3		2		1	
3												
4	7		8		9		10		11		12	
5												
6	18		17		16		15		14		13	
7												
8	19		20		21		22		23		24	
9												
10	30		29		28		27		26		25	
11												
12	31		32		33		34		35		36	
13												

A. Description of original monument and accessories and/or subsequent restoration:

March 18, 1834 Hervey Parke, D.S. Set post corner Sections 33 & 34. Hemlock 16" N78°W 45 links, Hemlock 20" N69°E 1 link. June 20, 1963 M.S.H.D. witness card by Donald C. Pyle, R.L.S. #3165. Found 1 1/4" pipe 6" deep. S30°E 56.21' 32" Maple, S15°W 61.48' NW corner tombstone (Barton), N15°E 69.97' 17" Elm. Sept. 9, 1968 M.S.H.D. witness card R. Fosdick, survey chief, 1" pipe. N30°E 73.55' end of curb and gutter, S30°E 56.00' 32" Maple, S60°W 87.75' 26" Maple. Oct. 25, 1973 survey L-436, P-254 by Rowe, L.S. #11192. No mention of object or accessories.

B. Description of corner evidence found and/or method applied in restoring or reestablishing corner:

Found 1" pipe 30' south of centerline of M-46 and two accessories that indicate the corner found is in the same position as the 1963 witness card. Accepted 1" pipe as the best evidence of the original corner.

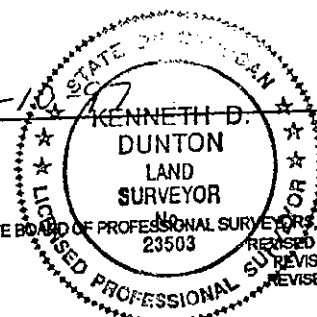
C. Description of monument for corner and accessories established to perpetuate locating the position of the corner:

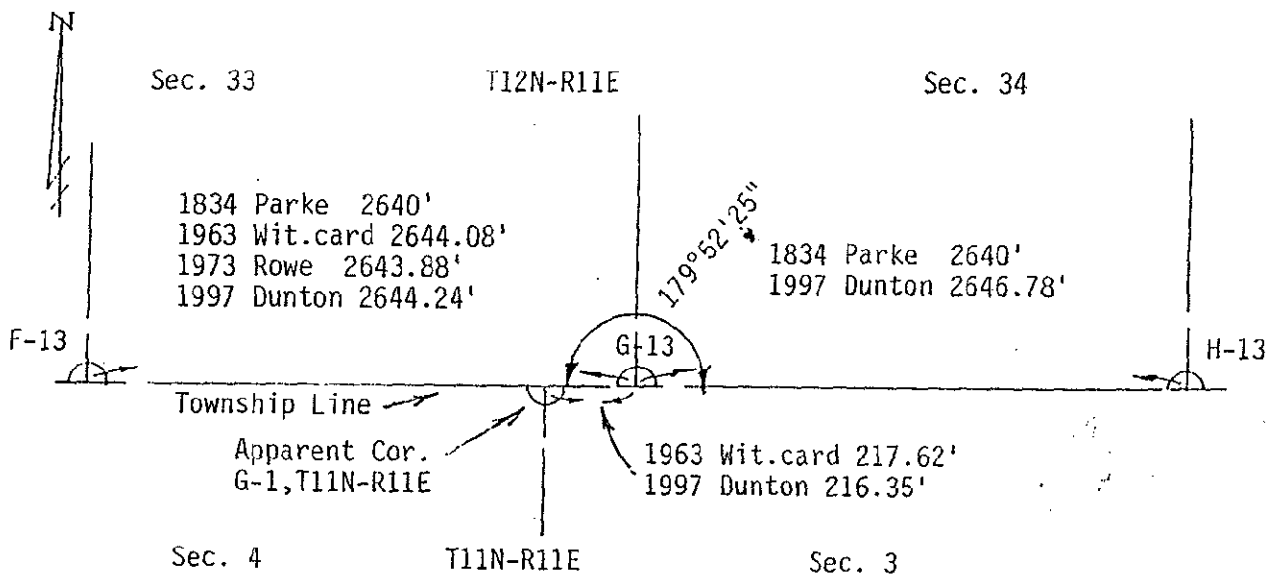
Removed 1" pipe and placed concrete monument with standard brass cap stamped G-13, T12N-R11E. North 30.00' E-W centerline conc. pavement M-46. N35°E 75.80' NE corner conc. curb. S35°E 55.36' fnd. spike in NE face 36" Maple. South 33.48' fnd. spike in E. face 30" Maple. S30°W 87.90' set T. C. Remon. tag & spike in N. face 24" Maple. S20°W 61.41' NW corner tombstone (Barton). West 216.35' fnd. iron stake at apparent corner G-1, T11N-R11E.

Signed by [Signature]
 Surveyor's Michigan License No. 23503

Date 11-10-97

APPROVED
 11-10-97
 [Signatures]





Faint, illegible text or markings at the bottom of the page, possibly bleed-through from the reverse side.