

SURVEY & REMONUMENTATION

MAR 02 1999

1998 REMONUMENTATION PROGRAM
LAND CORNER RECORDATION CERTIFICATE
 Filing Requirement of Act 74, Mich. P.A. 1970

For corners in **SECTION** Kingston Township

<u>Tuscola</u> (County)	Located in:	Corner Code #
1. Public Land Survey	T <u>12</u> N R <u>11</u> E	K-1
	T _____ R _____	_____
	T _____ R _____	_____
	T _____ R _____	_____
2. Property Controlling in Section	S _____ T _____ R _____	_____
	S _____ T _____ R _____	_____
3. Miscellaneous Property in Sec.	S _____ T _____ R _____	_____
	S _____ T _____ R _____	_____

RECEIVED FOR RECORD
 LIBER NO. _____ PAGE NO. _____
 FILE NO. # 83
KINGSTON TWP
58 DEC 10 PM 4:14
Joseph M. Dunton
 TUSCOLA COUNTY
 REGISTER OF DEEDS

Register of Deeds Stamp & File Number

4. Lot No. _____, Recorded Plat _____
 5. Private Claims _____

I, Kenneth D. Dunton, in a field survey on Aug. 16, 19 98 do hereby state that under requirements of P.A. 74, Michigan P.A. of 1970, the corner points mentioned in lines 1 and 2 above were in conformance with regulations and rules therefore as required in the current manual of survey instructions of the United States Department of the Interior, Bureau of Land Management or by a decree of a Court of Law and /or that the corner points mentioned in lines 3, 4 and 5 above were in conformance with the rules of the Michigan Board of Land Surveyors or by a Decree of a Court of Law, established, re-established, monumented, recovered, found as expressed below:

NOTE: Not more than 2 corners, all in the same town and range, may be recorded on this certificate.

A	B	C	D	E	F	G	H	I	J	K	L	M
1												
2	6		5		4		3		2		1	
3												
4	7		8		9		10		11		12	
5												
6	18		17		16		15		14		13	
7												
8	19		20		21		22		23		24	
9												
10	30		29		28		27		26		25	
11												
12	31		32		33		34		35		36	
13												

A. Description of original monument and accessories and/or subsequent restoration:
 G.L.O. Notes Nov. 20, 1834 by H. Parke, D.S., set post corner Sections 35 & 36, Hemlock 11" N59°E 16 links, Hemlock 11" N56°W 37 links. G.L.O. notes Nov. 26, 1834 by H. Parke, D.S., North between Secs. 1 & 2, T12N-R11E and at 80.78 chains intersected N. boundary at post, Cedar 20" S25°W 18 links, Cedar 12" S54°E 23 links. T.C.R.C. witness card, date unknown, by W. E. Leonard, Surveyor, Ford axle with stones, no accessories given.

B. Description of corner evidence found and/or method applied in restoring or reestablishing corner:
 Dug 30" x 48" x 36" deep hole and found rock pile and pieces of wood, no evidence of Ford axle. 1890 drain notes of Vorhes Drain, by J. A. Teskey, Surveyor, indicate that each 1/4 mile along the South line of Sec. 35, T13N-R11E, measures 19.93 chains (1315.38), the distance as now measured between Corner I-13 and J-13 = 2634.33, the distance as now measured between J-13 and the rock pile = 2636.17' with a 00°00'10" deflection at Corner J-13. With the above information I accepted the center of the rock pile as the best evidence of the original corner.

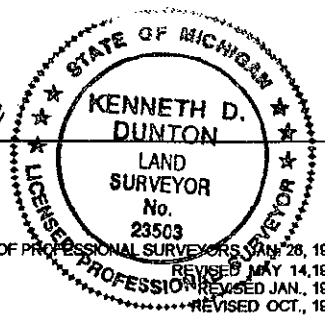
Corner K-1, T12N-R11E is common with corner K-13, T13N-R11E.

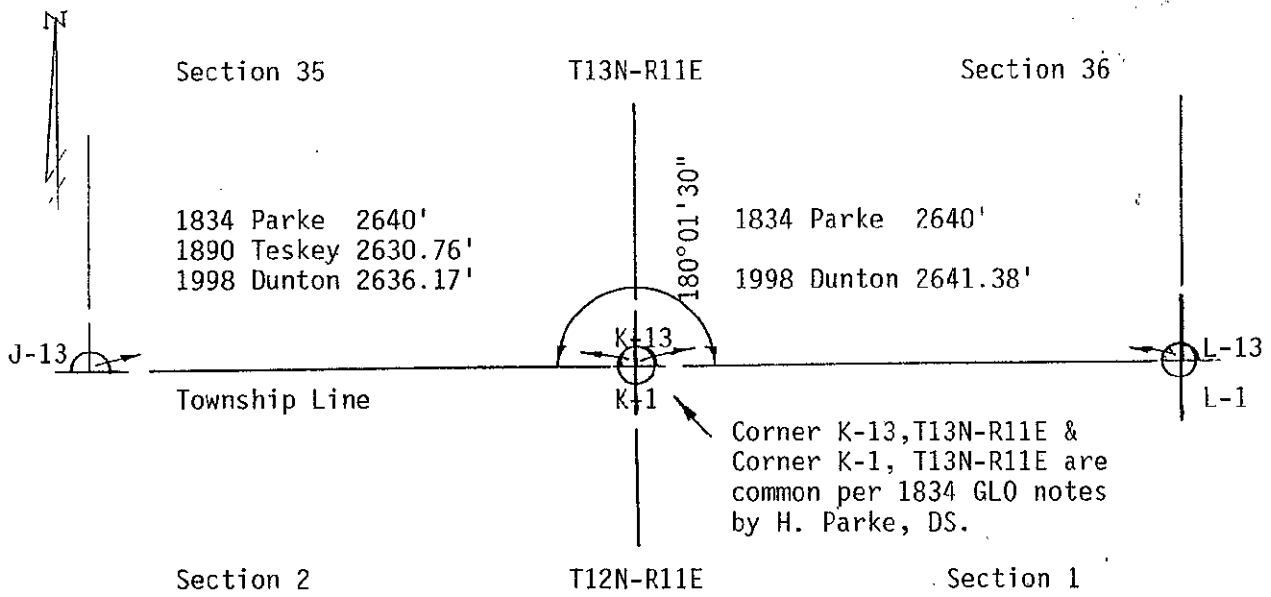
C. Description of monument for corner and accessories established to perpetuate locating the position of the corner:
 Removed rock pile & perpetuated with standard monument stamped K-13, T13N-R11E. Placed rocks & asphalt around base of monument & placed mon. box over monument.
 N55°W 65.86' set T.C. Remon. tag & spike in S. face 4" x 4" wood post.
 N45°E 50.84' set T.C. Remon. tag & spike in SE face 12" wood cor. post.
 N55°E 62.07' set T.C. Remon. tag & spike in SE face utility pole.
 S55°E 52.09' set T.C. Remon. tag & spike in W. corner RR tie cor. post.
 S15°W 45.25' set 1/2" x 18" iron rod in road shoulder.

Signed by *Kenneth D. Dunton*
 Surveyor's Michigan License No. 23503

Date 12-2-98

APPROVED
12-2-98
J.M.D.
R.P.S.
J.P.E.





**SURVEY &
REMONUMENTATION**

MAR 02 1999

SECTION