

MAR 02 1999

1998 REMONUMENTATION PROGRAM

LAND CORNER RECORDATION CERTIFICATE  
Filing Requirement of Act 74, Mich. P.A. 1970

SECTION

For corners in Kingston Township

Tuscola

(County)

Located In:

Corner Code #

1. Public Land Survey

T12N R11E

L-1

T R

T R

T R

T R

2. Property Controlling in Section

S T R

S T R

3. Miscellaneous Property in Sec.

S T R

S T R

TUSCOLOA COUNTY  
REGISTER OF DEEDS

*Joseph M. ...*

RECEIVED FOR RECORD  
LIBER NO. \_\_\_\_\_ PAGE NO. \_\_\_\_\_  
FILE NO. 484  
Kingston Twp.  
98 DEC 10 PM 4:14

Register of Deeds Stamp & File Number

4. Lot No. \_\_\_\_\_, Recorded Plat \_\_\_\_\_

5. Private Claims \_\_\_\_\_

I, Kenneth D. Dunton, in a field survey on Oct. 30, 1998 do hereby state that under requirements of P.A. 74, Michigan P.A. of 1970, the corner points mentioned in lines 1 and 2 above were in conformance with regulations and rules therefore as required in the current manual of survey instructions of the United States Department of the Interior, Bureau of Land Management or by a decree of a Court of Law and/or that the corner points mentioned in lines 3, 4 and 5 above were in conformance with the rules of the Michigan Board of Land Surveyors or by a Decree of a Court of Law; established, re-established, monumented, recovered, found as expressed below:

NOTE: Not more than 2 corners, all in the same town and range, may be recorded on this certificate.

1	A	B	C	D	E	F	G	H	I	J	K	L	M
2		6		5		4		3		2		1	
3													
4		7		8		9		10		11		12	
5													
6		18		17		16		15		14		13	
7													
8		19		20		21		22		23		24	
9													
10		30		29		28		27		26		25	
11													
12		31		32		33		34		35		36	
13													

A. Description of original monument and accessories and/or subsequent restoration:

G.L.O. Notes Nov. 20, 1834 by H. Parke, D.S., set 1/4 section post, Cedar 10" N60°E 35 links, Cedar 9" N64°W 15 links.

B. Description of corner evidence found and/or method applied in restoring or reestablishing corner:

Found nothing from several excavations along township line. Established corner position by single proportion between Corners K-13 & M-13, T13N-R11E. Accepted this proportional position as a careful and faithful re-establishment of the position of the original corner. Monument corner falls in line with remains of old fence line to South. Newer fence line to North is 6'± East of monument.

Corner L-1, T12N-R11E is common with corner L-13, T13N-R11E.

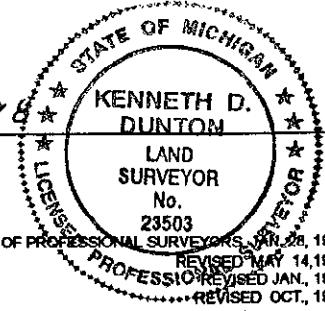
C. Description of monument for corner and accessories established to perpetuate locating the position of the corner:

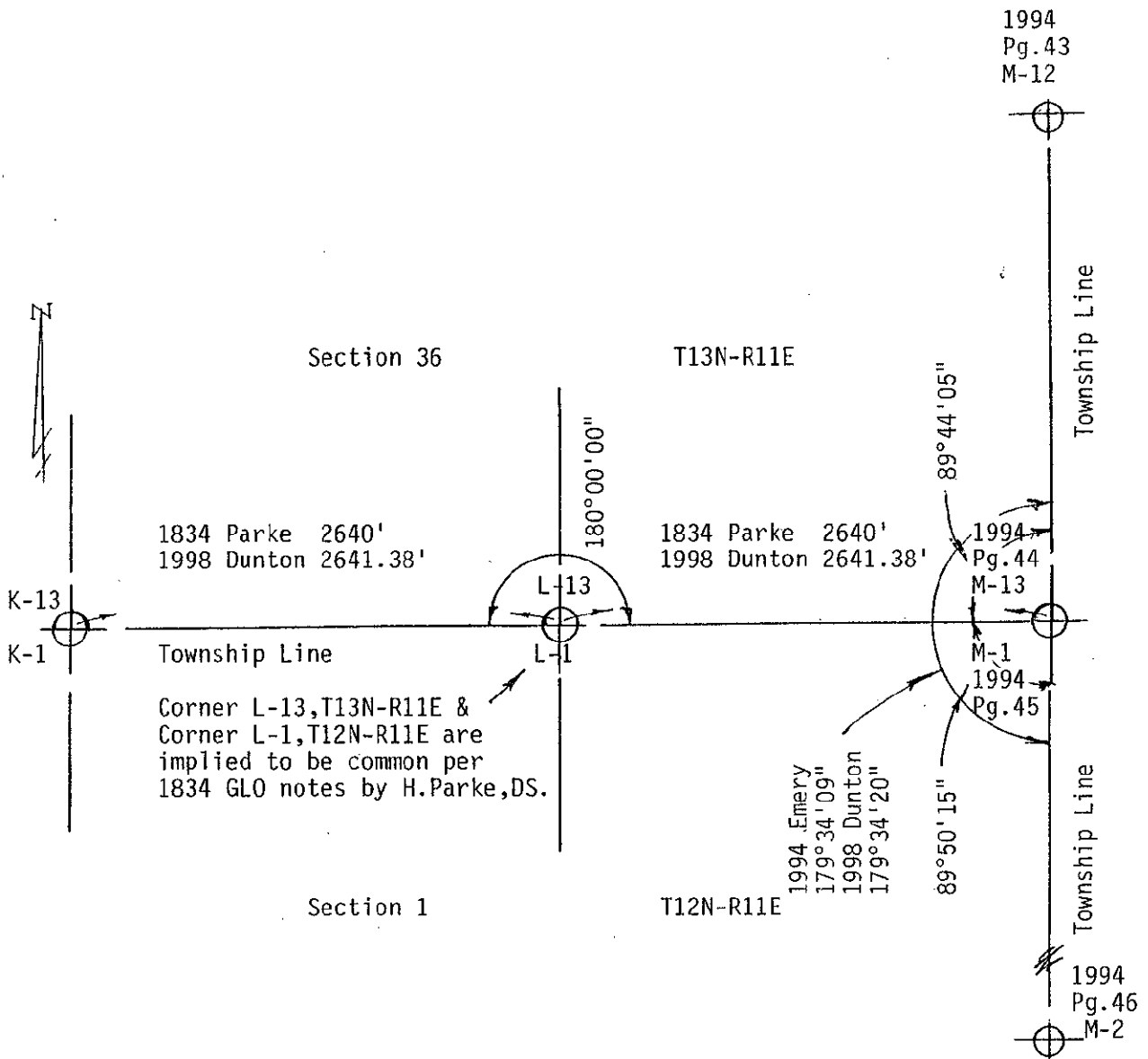
Set standard monument stamped L-13, T13N-R11E. Set carsonite post at monument.  
West 60.72' set T.C. Remon. tag & spike in S. face 10" Oak (S'ly of twin 10" Oaks).  
N80°W 20.75' set T.C. Remon. tag & spike in NE face 10" Oak.  
N15°E 21.60' set T.C. Remon. tag & spike in SW cor. RR tie cor. post.  
N50°E 17.61' set T.C. Remon. tag & spike in SE face 36" Oak.  
South 10'± centerline trail E & W.  
South 30'± centerline of ditch to West.

Signed by *Kenneth D. Dunton*  
Surveyor's Michigan License No. 23503

Date 12-2-98

APPROVED  
12-2-98  
*[Signature]*





SURVEY &  
REMONUMENTATION

MAR 02 1999

SECTION