

COPY

REMONUMENTATION

DEC 07 1994

COMMISSION

1994 REMONUMENTATION PROGRAM  
LAND CORNER RECORDATION CERTIFICATE

Filing Requirement of Act 74, Mich. P.A. 1970

For corners in KINGSTON TOWNSHIP

RECEIVED FOR RECORD  
LIBER NO. \_\_\_\_\_ PAGE NO. \_\_\_\_\_  
FILING NO. #416  
Kingston Twp.  
94 NOV -9 PM 2:18  
VIRGINIA M. McLAREN  
TUSCOLA COUNTY  
REGISTER OF DEEDS

Register of Deeds Stamp & File Number

TUSCOLA (County)	Located In:	Corner Code -#
1. Public Land Survey	T12N. R 11E	M-2
	T _____ R _____	_____
	T _____ R _____	_____
	T _____ R _____	_____
2. Property Controlling in Section	S _____ T _____ R _____	_____
	S _____ T _____ R _____	_____
3. Miscellaneous Property in Sec.	S _____ T _____ R _____	_____
	S _____ T _____ R _____	_____

4. Lot No. \_\_\_\_\_, Recorded Plat \_\_\_\_\_  
5. Private Claims \_\_\_\_\_

	A	B	C	D	E	F	G	H	I	J	K	L
2	6		5		4		3		2			
3												
4	7		8		9		10		11			
5												
6	18		17		16		15		14			
7												
8	19		20		21		22		23			
9												
10	30		29		28		27		26			
11												
12	31		32		33		34		35			
13												

I, Lionel Roy Emery, in a field survey on July 15, 1994, do hereby certify that under requirements of P.A. 74, Michigan P.A. of 1970, the corner points mentioned in lines 1 and 2 above were in conformance with regulations and rules therefore as required in the current manual of survey instructions of the United States Department of the Interior, Bureau of Land Management or by a decree of a Court of Law and/or that the corner points mentioned in lines 3, 4 and 5 above were in conformance with the rules of the Michigan Board of Land Surveyors or by a Decree of a Court of Law; established, re-established, monumented, re-monumented, recovered, found as expressed below:

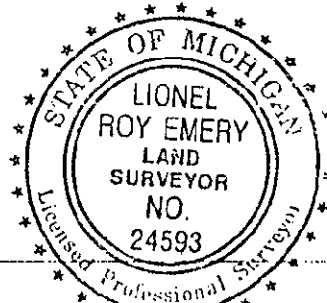
NOTE: Not more than 4 corners, all in the same town and range, may be recorded on this certificate.

A. Description of original monument and accessories and/or subsequent restoration:  
1834 (Gov't. Land Office Notes) Harvey Parke, D.S.-Set qr. Sec. post- Beech 12 N4W 28½; Beech 1 S34W 10  
1981 (Survey-Liber 4 of Surveys, <sup>483 & V</sup> page 484, Sanilac County) Russell L. Brown, P.S. 24588-set Railroad Spike- N20°E 48.66' to spike in 10" Maple; S80°E 52.52' to spike in 18" Maple; S45°E 40.97' to spike in 24" Maple; N70°E 25.40' to spike in 14" Twin Oak

B. Description of corner evidence found and/or method applied in restoring or reestablishing corner:  
Found Railroad Spike in Gravel Road North & South at fence line East and field division West.  
Accepted Railroad Spike as marking original corner.

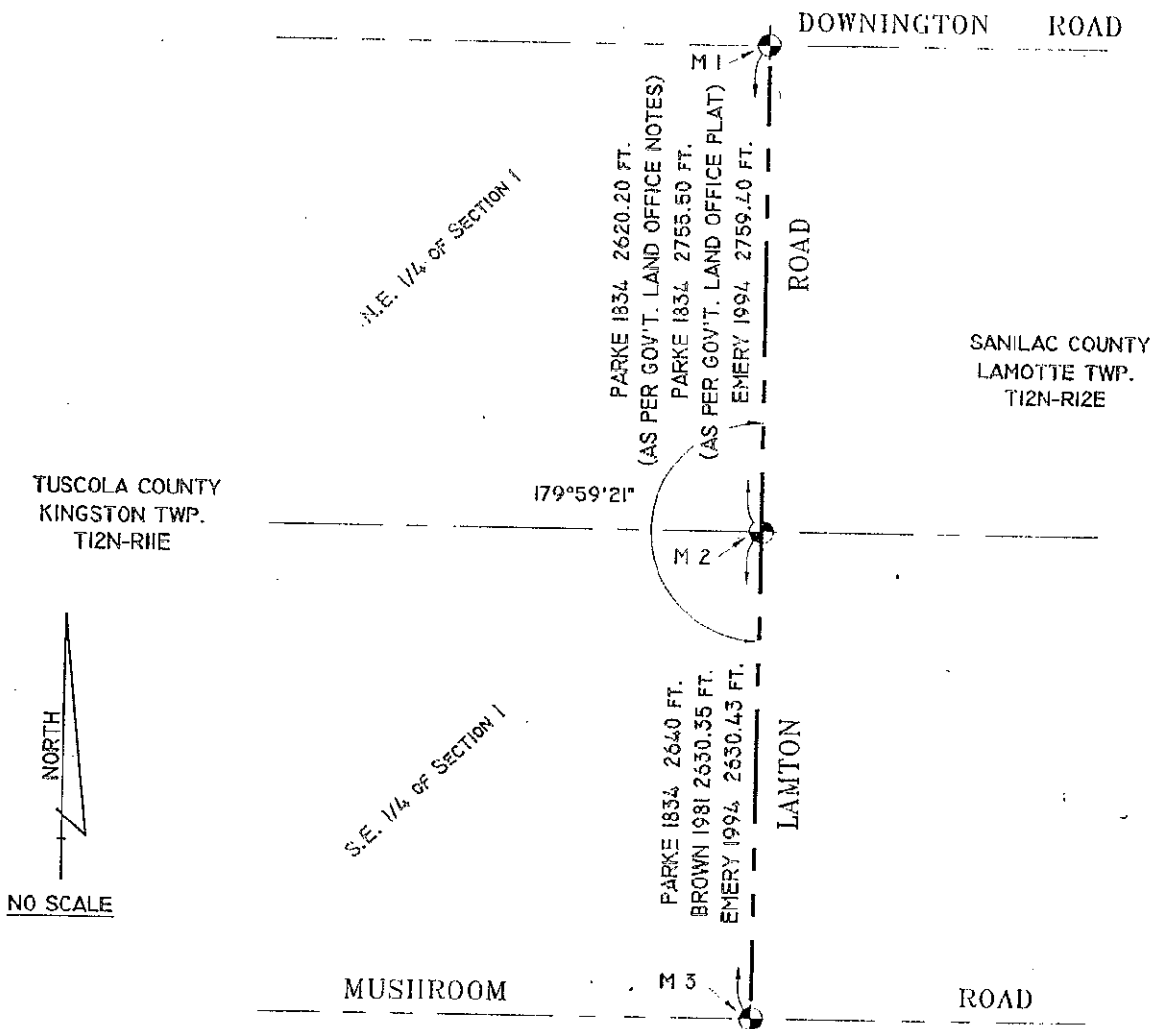
C. Description of monument for corner and accessories established to perpetuate locating the position of the corner:  
Removed Railroad Spike and replaced with Standard Tuscola County Concrete Monument with 2" Brass Cap stamped M2 T12N/R11E  
N24°E, 48.40'-T.C. Re-mon. tag above found nail in Southeast face of 12" Ash  
N60°E, 25.10'-T.C. Re-mon. tag above found nail in Southeast face of 18" Twin Cherry  
S70°E, 52.39'-T.C. Re-mon. tag above found nail in South face of 20" Maple  
S34°E, 40.95'-T.C. Re-mon. tag above found nail in West face of 28" Maple  
West, 17.68'-Set ½" diameter reinforcing rod

Signed by Lionel Roy Emery Date Oct. 20, 1994  
Surveyor's Michigan License No. 24593



APPROVED  
10-20-94

COPY



COPY